

SWISSMEX®

OPERATOR'S MANUAL MANUAL DE OPERADOR

**2 YEARS
WARRANTY**

SEE INSIDE FOR DETAILS

**2 AÑOS
GARANTÍA**

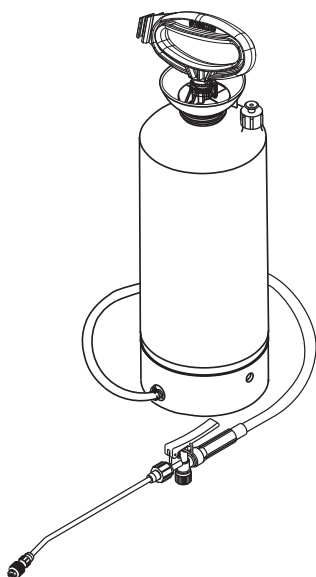
CONSULTE EL
MANUAL EN EL INTERIOR

COMPRESSION SPRAYER PULVERIZADOR DE COMPRESIÓN

Professional Series



10 - 11 - 12 - 13



0.8, 1.3, 1.5, 2.4 US GAL SPRAYERS PULVERIZADOR DE 3, 5, 6, 9 LITROS

- Compression sprayers with an internal piston system, very practical and secure. Ideal for the application of insecticides, pesticides and liquid fertilizers.
- Pulverizadores de compresión portátiles con sistema de bombeo "pistón interno", prácticos, sencillos y seguros. Ideales para aplicaciones foliares de insecticidas, herbicidas, fungicidas y fertilizantes líquidos.

MODELS / MODELOS

318185 - MX10

319185 - MX11

320180 - MX12

322180 - MX13

INDEX

1. Introduction.....	1	4. Operation	3
2. Safety Information	1	5. Maintenance.....	3, 4
2.1 Protection equipment		5.1 Maintenance guide	
2.2 Safety measures		6. Common problems, possible causes and solutions	4
3. General information	2, 3	7. Accessories.....	5
3.1 Main components		8. Spare parts.....	6
3.2 Technical data		9. Storage.....	7
3.3 Assembly		10. Warranty	7
3.3.1 Parts you are receiving			
3.3.2 How to assemble the sprayer			

1. INTRODUCTION



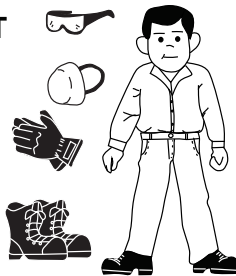
This manual contains important safety warnings, please read it carefully to avoid any possible accident. Keep all warning stickers and if necessary replace them.

MX model has been designed to apply insecticides, pesticides and fertilizers. Using the correct chemical for each model will make sure the success of the application and the maintenance in good condition of the equipment.

2. SAFETY INFORMATION

2.1 PROTECTION EQUIPMENT

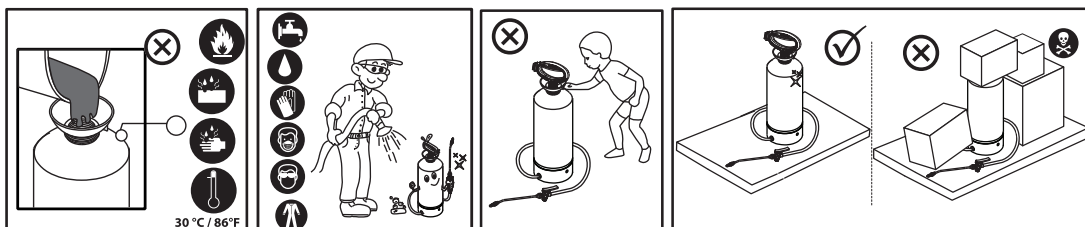
- Industrial gloves
- Safety glasses
- Closed toe footwear
- Coverall / Safety Clothes
- Safety mask



Important: this sprayer is designed to be used with chemicals and products in concentrations not higher than 5% than marked, that are compatible with the materials of this unit, using products that are not compatible with this materials can cause damage in the user and the unit. Warranty will apply only when the chemicals and products used with this unit are compatible with it.

2.2 SAFETY MEASURES

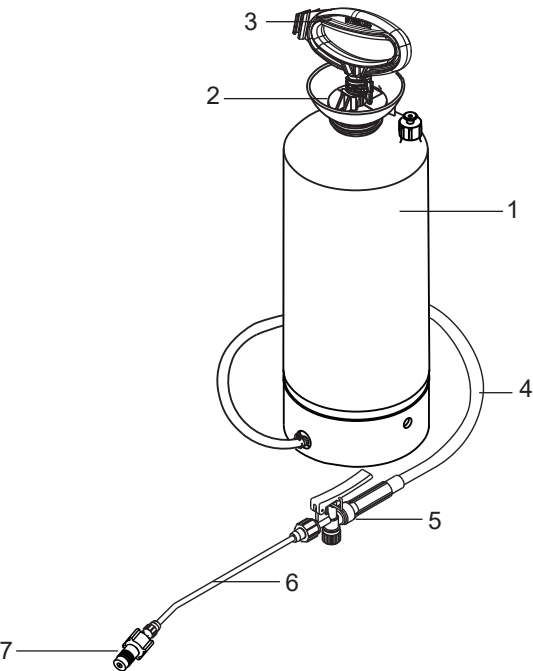
- Read this manual carefully before operating the equipment.
- Incorrect handling by not qualified persons may cause serious accidents.
- Do not make modifications or adaptations because they can compromise your equipment and put your safety and that of a third party at risk. They also invalidate the warranty.
- Do not allow the presence of children, the elderly, people with disabilities or animals when using the equipment.
- Keep your equipment in good condition and in a safe place. Always wash and store your equipment without pressure.
- Read and follow the instructions of the chemical product you are going to apply.
- Wear the personal protective equipment mentioned above when using, filling or washing your sprayer
- Keep connections tight to prevent leaks.
- Never fill your sprayer with hot liquids, maximum: 30 ° C = 85 ° F.



3. GENERAL INFORMATION

3.1 MAIN COMPONENTS

- 1. Tank
- 2. Filling port
- 3. Pump handle
- 4. Hose
- 5. Valve body assy
- 6. Spray lance
- 7. Nozzle body



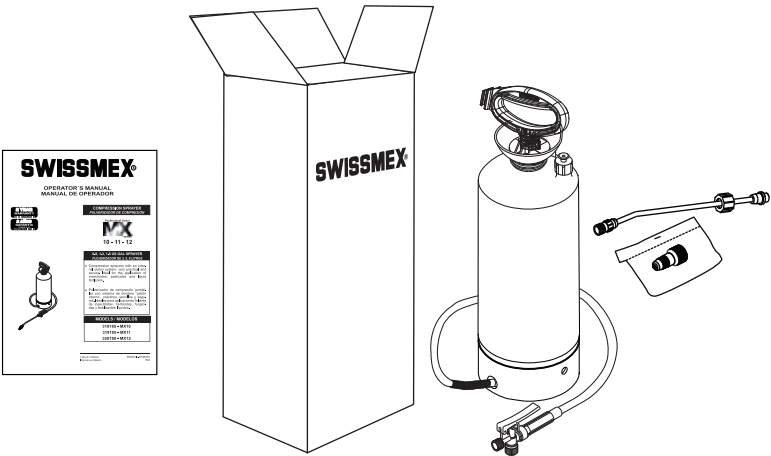
3.2 TECHNICAL DATA

	ESPECIFICATIONS			
Model	318185 - MX10	319185 - MX11	320180 - MX12	322180 - MX13
Tank capacity	1.4 GAL / 5.5 L	1.8 GAL / 7 L	2.3 GAL / 9 L	3.5 GAL / 13.5 L
Tank working capacity	0.8 GAL / 3 L	1.3 GAL / 5 L	1.5 GAL / 6 L	2.4 GAL / 9 L
Carrying strap	N/A	Padded and adjustable		
Pump system	Plastic piston			
Pistón sleeve	1.5" / 38 mm			
Hose	Fiber vinil reinforced ID			
Shut-off	Professional with filter			
Spray lance	16.5" / 42 cm FVR	20.5" / 52 cm FVR		
Nozzle	Plastic adjustable			
Discharge at a 3 bar/min	29.75 oz - 880 ml			
Work pressure	1 a 2.5 bar - 14.5 a 36.2 psi			

3.3 ASSEMBLY

3.3.1 Parts you are receiving

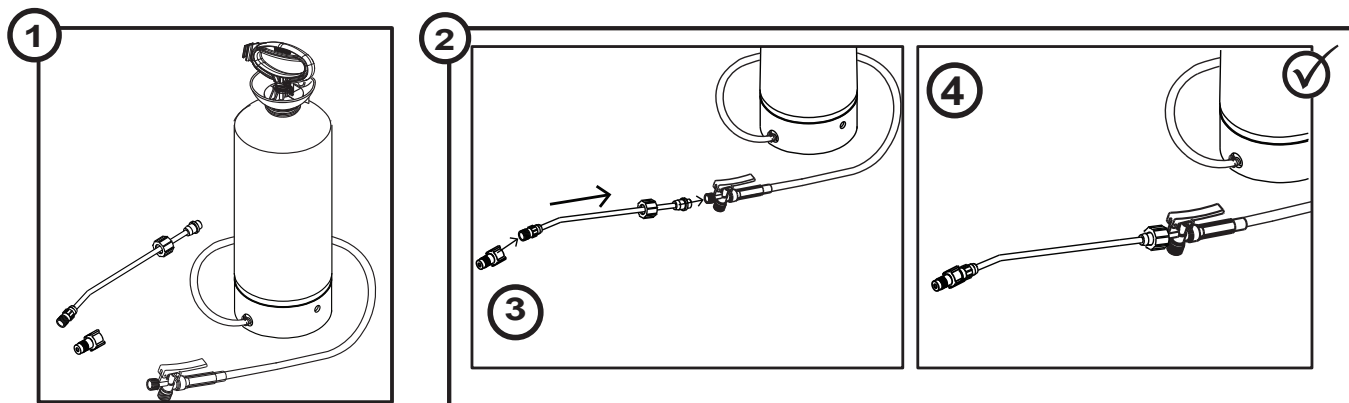
- Tank with pump handle, hose and shut-off
- 1 Spray lance
- 1 Nozzle
- Operator's manual



3.3.2 How to assemble the sprayer:

Compression sprayers:

1. Remove all the parts from the box and tank.
2. After removing the nozzle from the bag fix it in the spray lance.
3. Place the applicator upright on a table, assemble the spray tube with the gun and tighten firmly.
4. Your sprayer is ready to use.

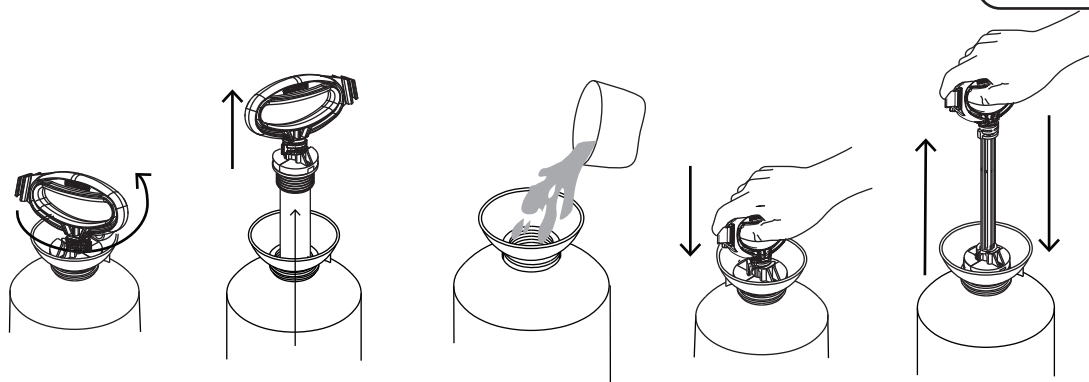


4. OPERATION

- Mix the solution in a separate container following the instructions of the product manufacturer.
- Unscrew the pumping tube and remove it from the tank.
- Pour the pre-mixed solution up to the indicated level marked in the tank.
- Replace the pump tube and screw it tightly, then pressurize the unit.
- Hold the sprayer by the handle or place it on the shoulder with the carrying strap and start applying.
- Turn the nozzle to change the spray pattern.

NOTE:

To ensure good performance use original “SWISSMEX-RAPID” spare parts



NOTE:

The pump tube must be tight firmly otherwise the applicator will leak and will not hold pressure.

5. MAINTENANCE

The compression sprayer requires minimum maintenance. Follow in detail the steps mentioned in this manual and the useful life of the equipment will be very long. At the end of your spraying job, don't leave the applicator with pressure, let all the pressure release through the nozzle, or unscrew the pump handle and turn over the sprayer to empty the remaining solution in an appropriate container for it. Now rinse the entire sprayer system with fresh water, as follows:

- Pour approximately 1/2 gallon of fresh water in the tank, pressurize and flush, the pumping system by pressing trigger at least 2 minutes, then drain all remaining water.
- Carrying straps are made of non-absorbent materials, nevertheless in case of solution spillage, wash them with fresh water to eliminate all risk of skin irritation.
- A unit that has been used with herbicides should never be used to spray insecticides, unless the sprayer has been properly cleaned and all other chemicals neutralized. Failure to do this could cause you to kill plants that have been sprayed.
- Always follow manufacturer's instructions of the chemicals in use to avoid accidents and take maximum advantage of the product.
- Store your sprayer clean, empty and dry in a place protected from sunlight.

NOTE: To keep your sprayer in good conditions of use is necessary to maintain oiled the following parts:
Nozzle O-rings, gun o-rings, piston ring, gasket.

5.1 MAINTENANCE GUIDE

NOTE: To keep your sprayer in optimal condition, keep the following parts always greased: shut-off O rings, Piston sleeve, Pump tube O rings, Plunger O rings, Nozzle O ring.

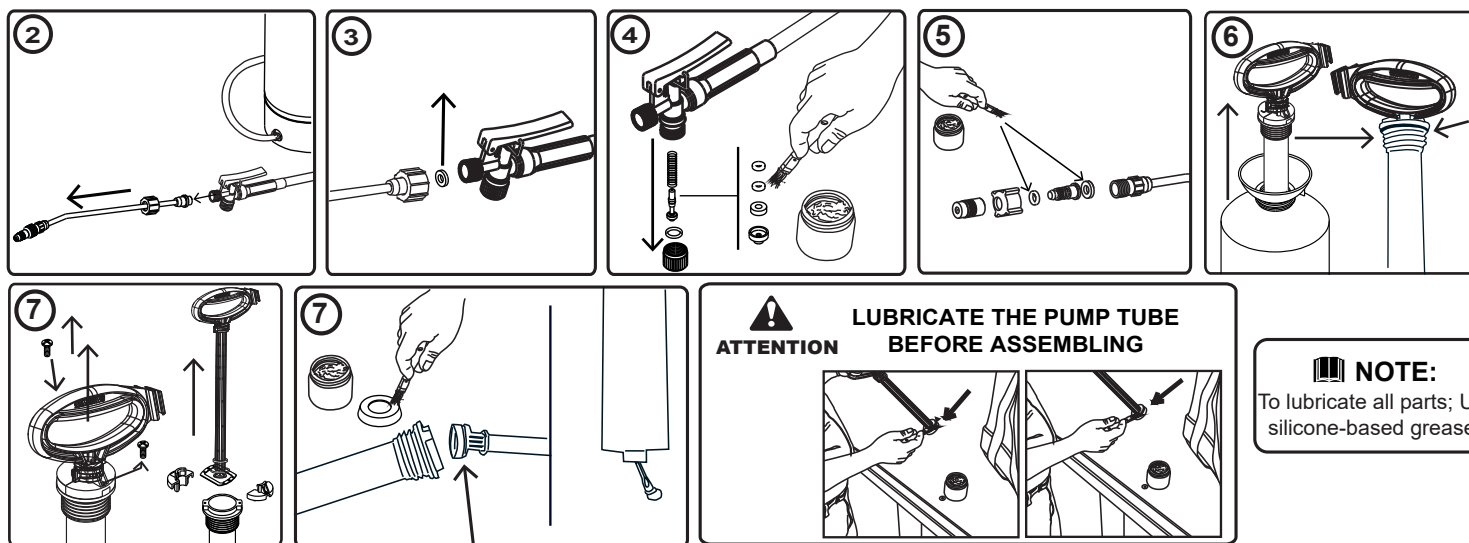
Wash the sprayer inside and outside with fresh water, to be able to handle it without contamination risk.

It is recommended to replace all wear parts when performing a repair job:

- Piston sleeve, - Shut-off O rings, - Pump tube O rings, - Plunger O rings,
- Nozzle O ring - Nozzle gasket

Instructions for compression sprayers:

- 1.- Change the wear parts in the pump tube, shut-off, spray lance and nozzle if your sprayer is leaking or as preventive maintenance.
- 2.- Unscrew the nut between spray lance and shut-off.
- 3.- Change gasket located between nut and shut-off.
- 4.- The shut-off is comprised by several pieces, remove the lower plug and replace gasket, remove plunger and replace the two o-rings and gasket. Lubricate before assembly.
- 5.- Unscrew the nozzle and replace O-ring and gasket, lubricate.
- 6.- Remove the pump tube from the tank and replace O ring located in the upper part, lubricate before assembling.
- 7.- Remove screws of the pump tube, remove handle, in the lower part replace and lubricate the piston sleeve.
Remove the antenna from the lower end of the pump tube and replace the O ring.



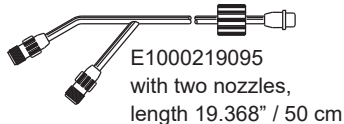
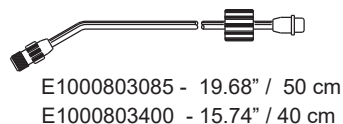
6. COMMON PROBLEMS, POSSIBLE CAUSES & SOLUTIONS

PROBLEM	CAUSE	SOLUTION
The piston does not slide easily and there is noise between the pump tube and the piston.	There is no lubrication between the pump tube and the piston sleeve.	Check the piston sleeve. If it is worn-down replace it and grease it, if not just grease the edges.
The pump system leaks.	The antenna does not seal correctly in the seat of the pump tube.	Check the antenna and if necessary replace the seal. Lubricate before reassembling.
Shut-off leaks after releasing the handle.	The O rings of the shut-off plunger are worn-down or swollen.	Replace and grease the new O rings and plunger
The sprayer is pressurized but there is no flow when pressing the shut-off handle.	The hose is clogged.	Loosen the hose clamp and check if the hose or the tank outlet are clogged and if so, proceed to unclog them with pressurized air or water
Although the sprayer is being pumped vigorously it does not build pressure.	The pump tube is not tight enough.	Tighten the tube and grease the O ring.

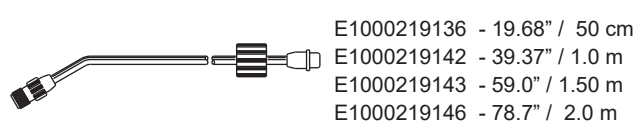
7. ACCESSORIES

SPRAY LANCES:

Brass spray lances (without spray tip, nut and gasket)

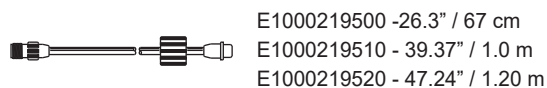


FVR spray lances (without spray tip, nut and gasket)

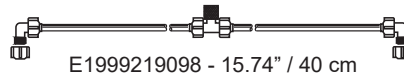


EXTENSION LANCE:

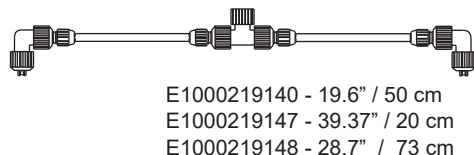
Brass extensions (with connector)



2-nozzle brass extensions



2-nozzle FVR extensions



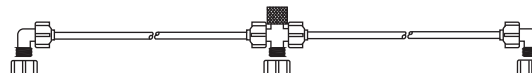
3-nozzle FVR extensions

E1000219138 - 39.37" - de 1 m
E1000219151 - 59.0 de 1.5 m



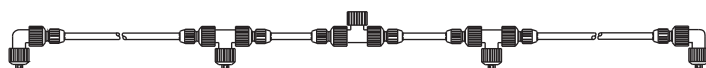
3-nozzle brass extensions

E1000219420 - 39.37 - 1.0 m



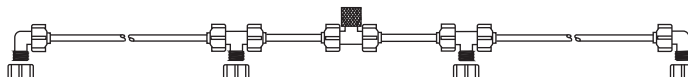
4-nozzle FVR extension

E1000219213 - 39.0" / 1.5 m



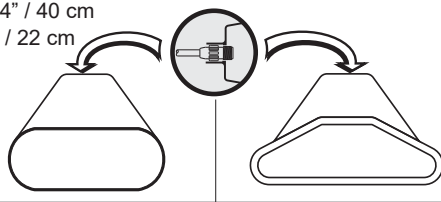
4-nozzle brass extension

E1000219097 - 59.0" / 1.5 m



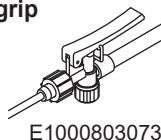
SCREEN SHIELDS

E1000219099 - 15.74" / 40 cm
E1000219117 - 8.6" / 22 cm

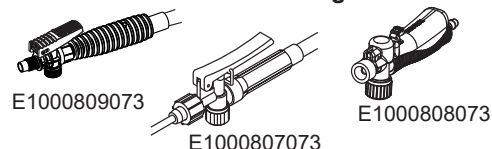


SHUT-OFFS

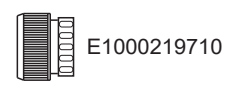
Shut-offs without grip



Shut-offs complete with filter and filter housing



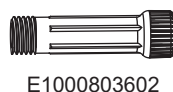
COMPLETE NOZZLES



For more technical information please look into our Nozzle Chart at www.swissmex.com

MORE ACCESSORIES

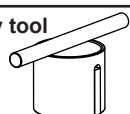
Filter housing



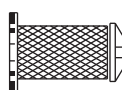
Extension adapter



Key tool

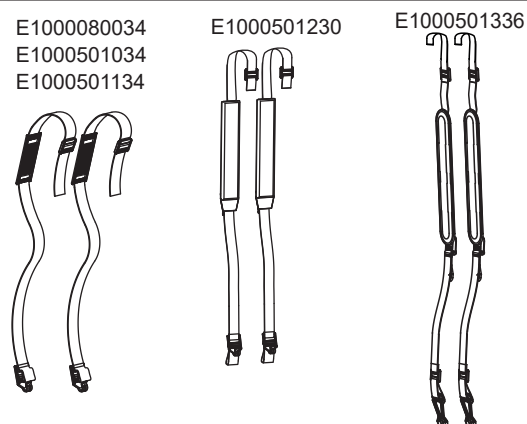


FILTERS

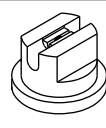
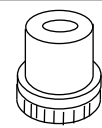


E2888219011
E2002219026
E2002219027
E2888219012
E2998219028

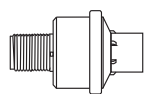
CARRYING STRAPS



SPRAY TIPS

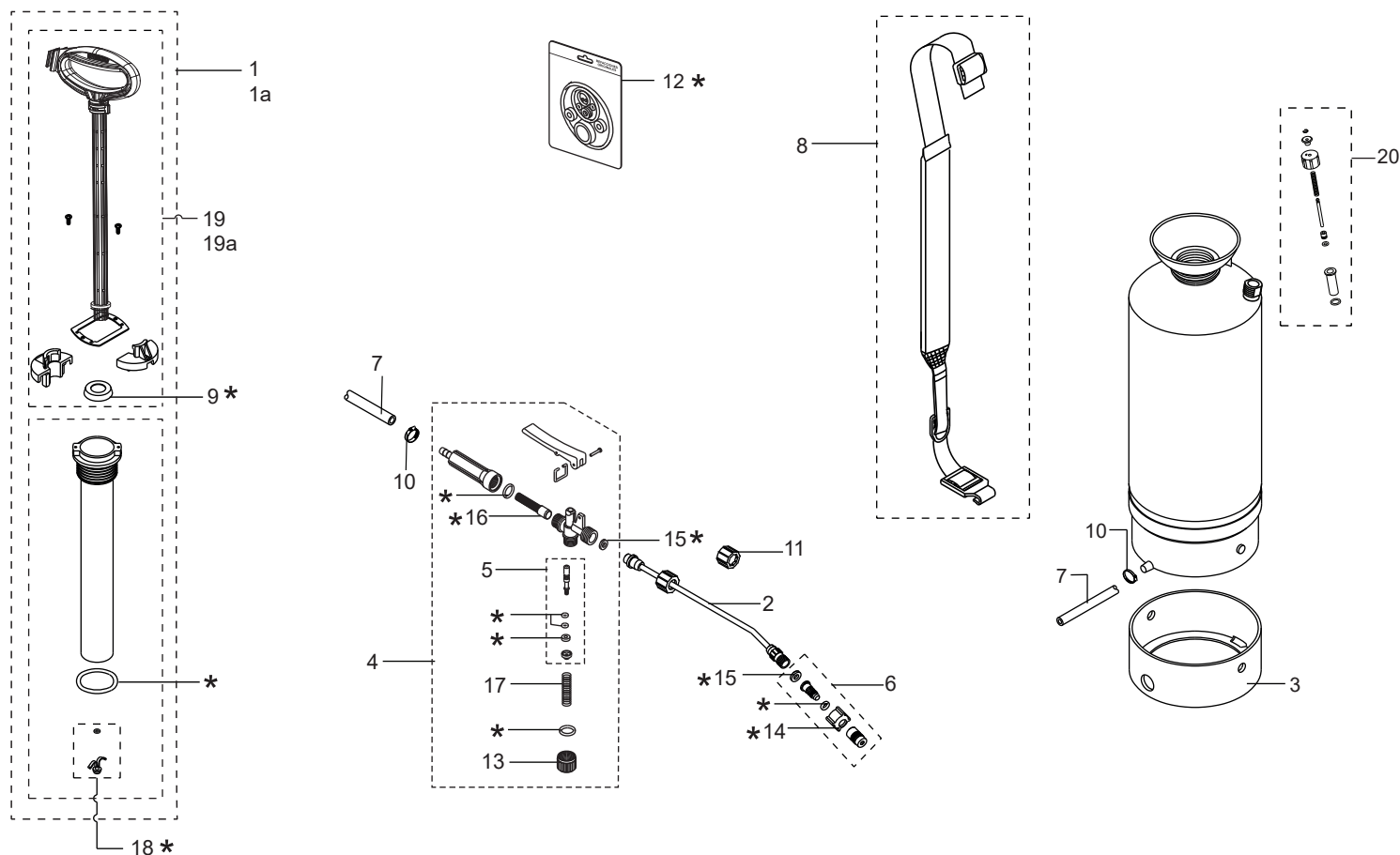


PRESSURE REGULATORS



E1016219002
E1888219001
E1016219001
E1016219003

8. SPARE PARTS



A Spare parts and consumables always available.

Part No.	Code	Description	Qty.
9	E1000120029	PISTON	20
11	E1000803059	NUT	10
12	*E1000120200	KIT SEALS	1
13	E1000803064	CAP	1
14	E1000803090	NUT	50
18	E1000120022	CHECK VALVE WITH ORING	10

*12 E1000120200 KIT SEALS

CHECK VALVE WITH ORING	1	NUT	1
FILTER	1	GASKET	2
PUMP TUBE ORING	1	GASKET PLUNGER	1
NUT ORING	2	NUT	2
PLUNGER ORING	2		
ORING NOZZLE BODY	1		

NOTE: * Not supplied with unit.

B Medium-use parts, available at discretion

Part No.	Code	Description	Qty.
1	E1000918019	PUMP TUBE (mod. MX10)	1
1a	E1000320317	PUMP TUBE (mod. MX11/MX12/MX13)	1
2	E1000803219	SPRAY LANCE	1
3	E1000120110	TANK BASE	1
4	E1000807075	VALVE BODY	1
5	E1000803167	PLUNGER ASS'Y	1
6	E1000803262	NOZZLE BODY ASS'Y	5
7	E1000803177	HOSE	1
8	E1000501269	CARRYING ASSY (model MX11/MX12/MX13)	1
10	E1000501082	CLAMP	50
15	E1000803215	GASKET	10
16	E1000807074	FILTER	10
17	E1000803067	SPRING	10
19	E1000318315	PUMP HANDLE (model MX10)	1
19a	E1000320314	PUMP HANDLE (model MX11/MX12/MX13)	1
20	E1000120323	PRESSURE RELIEF VALVE	1

NOTE: In the interest of continued technologic progress specifications are subject to change without notice.

9. STORAGE

Always store the sprayer clean and empty in a dry place protected from the sun.

10. WARRANTY

SWISSMEX®

Any claim made under this warranty must adhere to the Warranty Policy described below:

The warranty will be granted by SWISSMEX RAPID SA DE CV when the product presents manufacturing, assembly or material defects and this has been established after conclusive analysis at Swissmex plant (Lagos de Moreno, Jalisco, Mexico). The warranty consists of replacement of damaged parts or replacement of damaged equipment depending on conclusions of the analysis of the claim. This warranty does not include labor installation costs or shipping costs.

The warranty of your product can be PREMIUM, MEDIUM or BASIC, depending on which category your equipment belongs to. You can check this on the Operator's Manual and our website at www.swissmex.com.

The applicable warranty period can be:

Advanced Line = 3 years
Professional Line = 2 years
Heavy duty = 1 year

THIS WARRANTY WILL BE INVALID UNDER THE FOLLOWING CIRCUMSTANCES:

1. When the product presents faults due to abuse, misuse or inadequate maintenance, lack of proper cleaning and rinsing according to the instructions contained in the Owner's manual.
2. For the purpose of this warranty the use of any chemical solution listed as dangerous or different from those recommended in the Operator's Manual will be considered as misuse.
3. When the product has undergone modifications or adaptations by unauthorized persons or by the use of spare parts that have not been provided by SWISSMEX-RAPID.
4. When the product has been damaged as a result of natural disasters.
5. When the fault is caused by normal wear of the parts due to use.

SWISSMEX-RAPID is not responsible for indirect or consequential damages arising from the use or operation of the product, damages resulting in personal injury, economic loss, loss of property, loss of income or profits or costs of removal, installation or reinstallation.

SWISSMEX-RAPID, makes no other express warranty with the exception of the one quoted here. This warranty gives you specific legal rights and you may have other rights that vary from country to country.

To make this warranty valid, contact your dealer and present proof of purchase.

Contac us / Contáctanos:
www.swissmex.com
exports@swissmex.com.mx
Calle Swissmex No. 500
Lagos de Moreno Jal. México
Tels: +55 474 741 2216
800 849 19 92