

SWISSMEX®

OPERATOR'S MANUAL MANUAL DE OPERADOR

**2 YEAR
WARRANTY**

SEE INSIDE FOR DETAILS

**2 AÑOS
GARANTÍA**

CONSULTE EL
MANUAL EN EL INTERIOR

MX

**3 YEAR
WARRANTY**

SEE INSIDE FOR DETAILS

**3 AÑOS
GARANTÍA**

CONSULTE EL
MANUAL EN EL INTERIOR

SP

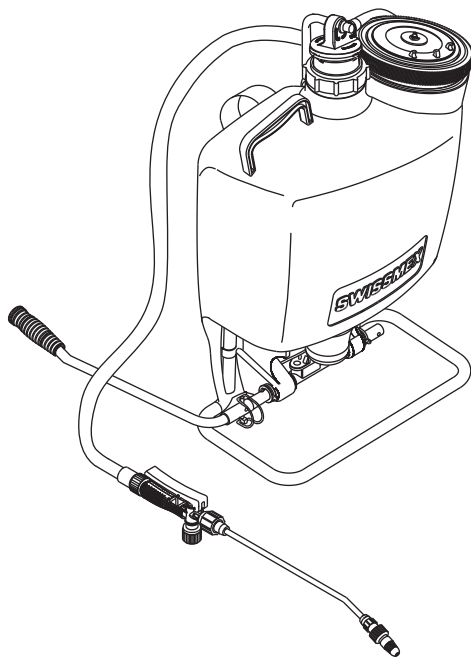
BACK PACK SPRAYER PULVERIZADOR DE MOCHILA

Advanced Series

SP06
by SWISSMEX

Professional Series

MX04
by SWISSMEX



4.2 US GAL LITER SPRAYER PULVERIZADOR 16 LITROS

- Models MX04 and SP06 are very innovative models with a unique internal central piston system. With these sprayers you may apply liquid products as: insecticides, herbicides, fertilizers, etc. in an easy, practical and safe way.
- Los modelos MX04 y SP06 son novedosos y únicos en el mundo con "sistema de bombeo central interno de pistón". Con estos equipos usted puede aplicar productos líquidos como: insecticidas, herbicidas, fertilizantes, etc. de forma práctica y segura.

MODEL / MODELO

406195 / 406185

INDEX

1. Introduction.....1	4. Operation.....4
2. Safety information.....1, 2	5. Maintenance.....5
2.1 Personal protective equipment	5.1 Maintenance guide
2.2 Safety measures	6. Trouble shooting guide.....6
3. General Information.....2, 3, 4	7. Spare parts list.....7
3.1 Main components	8. Warranty.....7
3.2 Technical data	
3.3 Assembly	
3.3.1 Parts you will receive	
3.3.2 How to assemble your sprayer	

1. INTRODUCTION

Thank you for buying a Swissmex equipment, we guarantee that the product you have acquired was made with an unbeatable quality, because it was developed with state of the art technology following all quality standards required. This equipment was carefully designed and built with the purpose of providing the maximum performance, economy and ease of operation. It is very important that the operator knows all the information contained in this manual, read it before operate it, follow the recommendations step by step and keep it at hand to consult it when necessary.



This manual contains important safety warnings: read it carefully, and watch for any possible accident. Preserve all the equipment stickers and if necessary replace them.

Backpack sprayers have been designed to apply different liquid products like herbicides, fungicides, insecticides, etc. Swissmex backpack sprayers are practical and light. Model MX04/SP06 has a central internal piston pump. It produces a good pressure and its novelty tank is sealed preventing any leaking. It has a back support and padded straps, spray gun with filter, a big tank opening with strainer and handle to transport and facilitate emptying it.



NOTE: Remember that inadequate application of agrichemicals may be harmful to man, environment and crops.

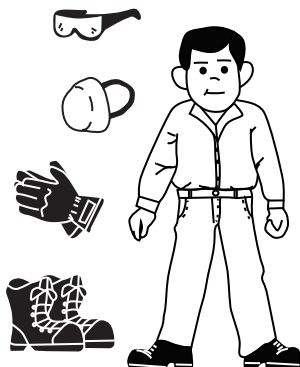
2. SAFETY INFORMATION

For your own safety and the safety of those around you please use the protective equipment suggested below when operating your sprayer:

2.1 PROTECTION EQUIPMENT

Personal protection equipment needed:

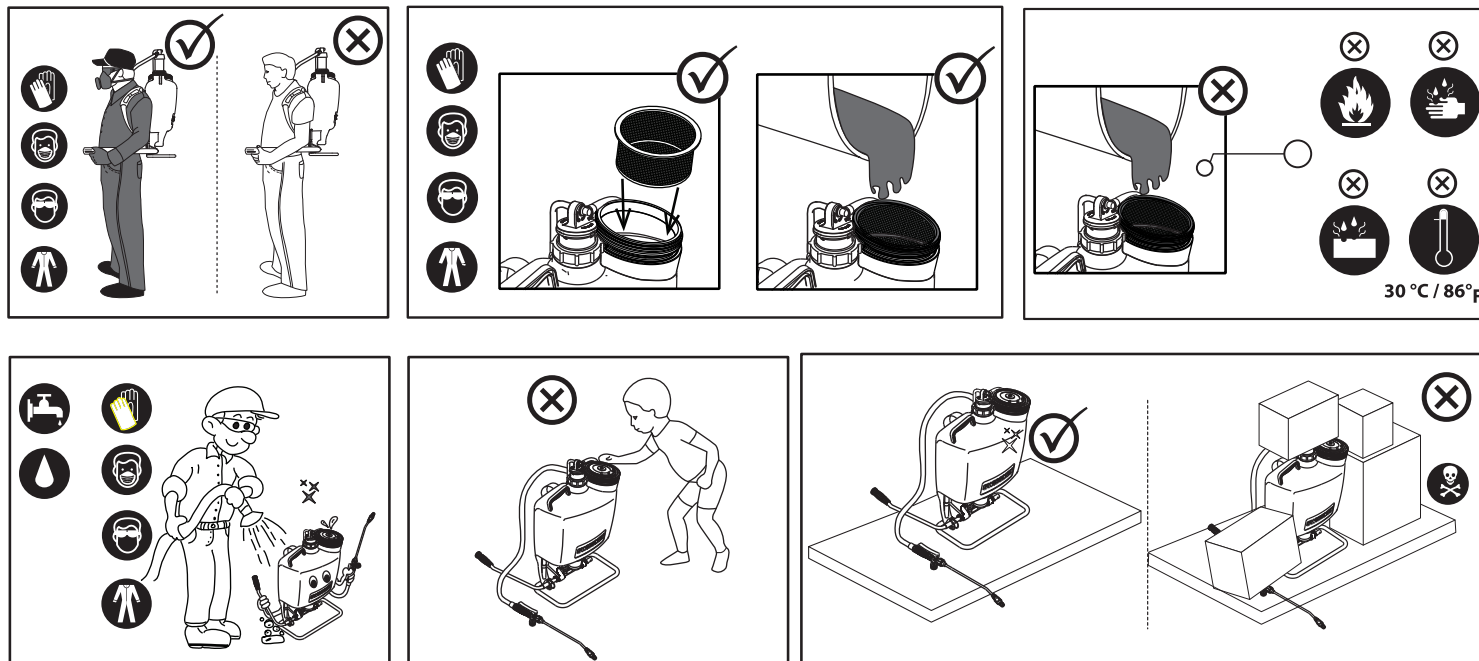
- Protective gloves
- Eye protection
- Enclosed shoes
- Overall / Safety Clothes
- Mask



Important: this sprayer is designed to be used with chemicals and products in concentrations not higher than a 5% than marked, that are compatible with the materials of this unit, using products that are not compatible with this materials can cause damage in the user and the unit. Warranty will apply only when the chemicals and products used with this unit are compatible with it.

2.2 SAFETY MEASURES

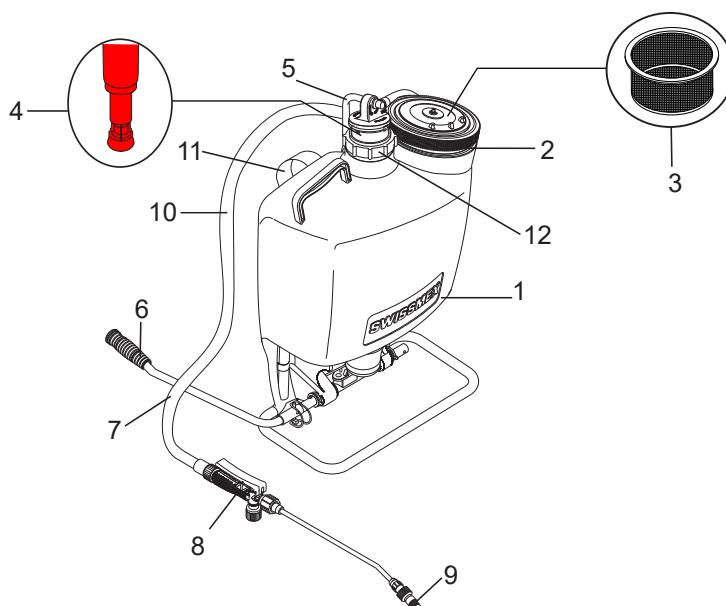
- Read carefully the entire owner's manual before filling, using or cleaning the sprayer.
- Do not leave the sprayer in reach of children or persons not qualified to handle it properly.
- Do not modify your equipment; it may compromise your equipment and put into risk third party safety. Any modifications or adaptation is under your own risk and it voids the warranty.
- Keep your equipment in good condition and in a safe place. Always wash and store the sprayer without pressure.
- Read and follow instructions of chemical supplier.
- Wear always the personal protective equipment advised above, whenever using, filling or cleaning the sprayer.
- Keep connections well tightened to prevent leaks.
- Never fill the sprayer with hot liquids. Max. 30°C = 85°F.
- Do not use your sprayer to apply caustic, corrosive or flammable solutions.



3. GENERAL INFORMATION

3.1 MAIN COMPONENTS

1. Tank
2. Tank opening, tank lid
3. Strainer
4. Pump tube with piston sleeve
5. Pump lever
6. Ergonomic grip
7. Pump handle
8. Shut-off valve with filter
9. Adjustable plastic nozzle
10. Hose
11. Adjustable carrying straps
12. Guide nut



3.2 TECHNICAL DATA

ESPECIFICATIONS		
Model	406195	406185
Tank capacity	16.0 L / 4.2 US gal	
Filling port	13.8 cm / 5.43"	
Carrying Straps	Cushioned with belt	
Pumping system	Central internal piston	
Piston Sleeve	45 mm / 1.37" elastomer	
Hose	fiber vinil reinforced 3/8" ID	
Shut-Off valve	Professional with filter	
Spray wand	20.5"/52 cm brass	20.5"/52 cm fiberglass
Nozzle	Brass adjustable	Plastic adjustable
Discharge at 3 bar/min	0.16.6 US gal / 630 ml	0.21 US gsl / 800 ml
Work pressure	4 - 6 bar / 58 – 87 psi	
Net Weight	4.973 kg / 10.06 Lbs	
Weight with box	5.433 kg / 11.97 Lbs	
Dimentions	H 57 cm x L37 cm x W 22 cm - 22 7/16" x 14 9/16" x 8 11/16"	

3.3 ASSEMBLY

3.2.1 Parts you will receive

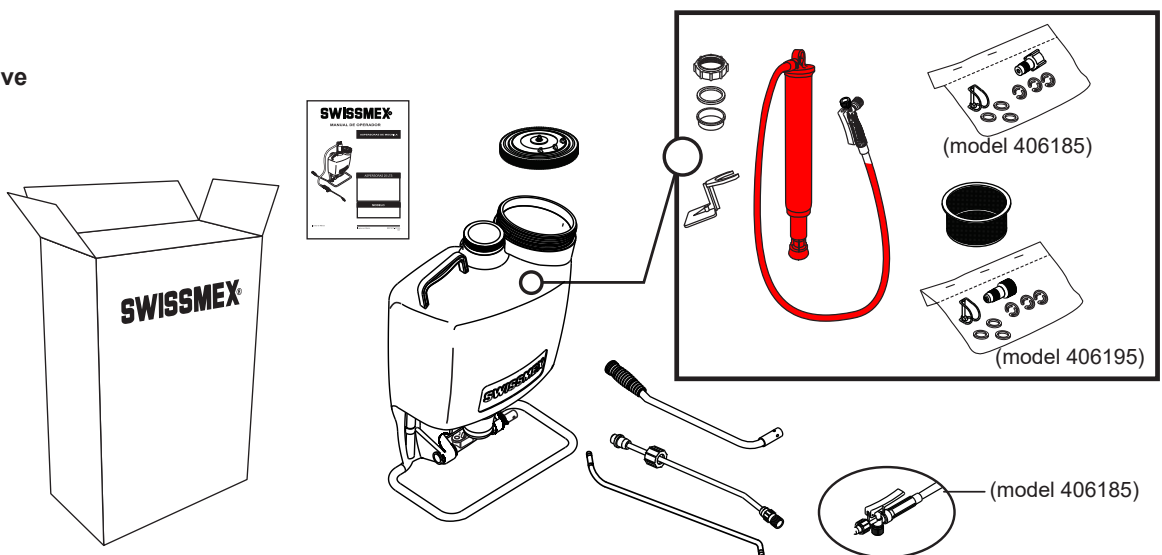
- 1 Pump handle
- 1 Pump lever
- 1 Spray wand
- 1 Tank lid
- 1 Owner's manual

Inside the tank you will find:

- 1 Strainer
- 1 Pump holder nut
- 1 Bushing guide
- 1 Gasket
- 1 Pump tube with hose and shut-off valve
- 1 Agitator

And a plastic bag with:

- 1 cotter pin
- 3 washers and 3 "c" lock pin
- 1 Adjustable nozzle

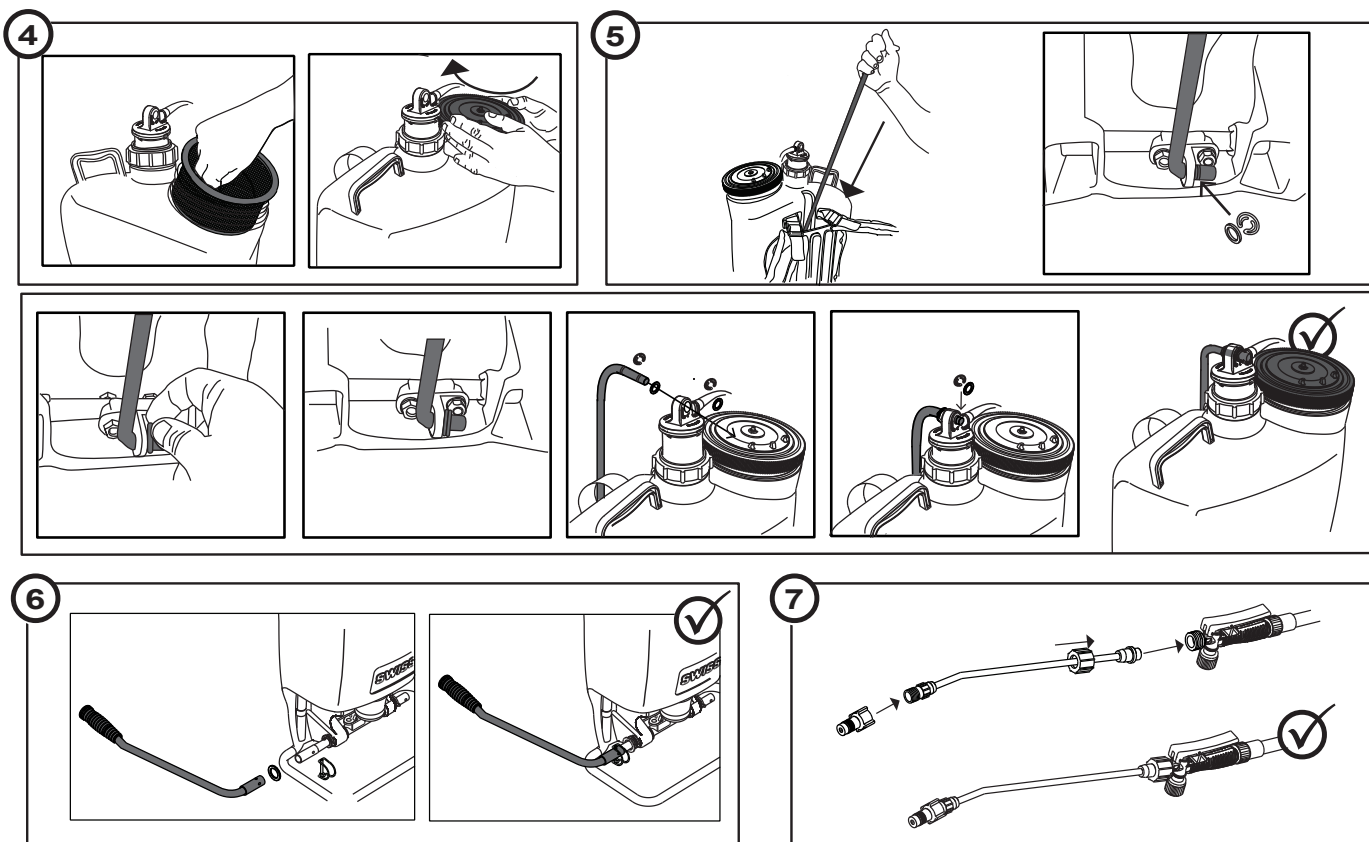


3.3.2 How to assemble your sprayer:

Following is explained how to assemble your sprayer, read carefully the text. The number at the beginning of the line corresponds to the graphic.

1. Take out all the parts from the box and from the tank.
2. Place the sprayer vertically on a table, place the pump holder nut, gasket and felt ring on the central opening. Oil the piston sleeve and the pump tube, insert it in the pump tube guide; carefully directing the piston sleeve to avoid any damage. Tighten the pump holder nut. Place the agitator.
3. Place the strainer and the tank lid on the tank opening.
4. Insert the pump lever behind the back rest and fix it with the pin and washers.
5. Place the pump handle on the shaft, fix it with a lock pin.
6. Finally tighten the spray gun and tube and then tighten the adjustable nozzle.





4. OPERATION

- Always use the strainer when filling the tank up with liquid.
- Mix the solution in a separate container, following the supplier directions on the box.
- Pour pre-mixed solution into sprayer and cap.
- Place the sprayer on your back and pressurize tank by pumping 25 times approx.
- You will need to pump once each 3 or 4 seconds to maintain the desired spraying pressure.
- For a continuous spraying, fix the shut-off valve lever with the lever lock.
- Move the nozzle cap to change the spraying pattern.

NOTE: To ensure good performance use original “SWISSMEX-RAPID” spare parts

5. MAINTENANCE

Since the sprayer needs little maintenance, if you follow the steps mentioned in this manual its lifespan will be very long. Do not keep the sprayer with pressure after finishing your spraying job, release the pressure through the nozzle depressing the trigger, then take the cap and strainer out and pour the remaining solution. Now rinse system with fresh water as follows:

- Pour approximately 1/2 gallon of fresh water in the tank, pressurize and flush, the pumping system by pressing trigger at least 2 minutes, then drain all remaining water.
- Carrying straps are made of non-absorbent materials, nevertheless in case of solution spillage, wash them with fresh water to eliminate all risk of skin irritation.
- A unit that has been used with herbicides should never be used to spray insecticides, unless the sprayer has been properly cleaned and all other chemicals neutralized. Failure to do this could cause you to kill plants that have been sprayed.
- Always follow manufacturer's instructions of the chemicals in use to avoid accidents and take maximum advantage of the product.
- Store your sprayer clean, empty and dry in a place protected from sunlight.

NOTE: To keep your sprayer in good conditions of use is necessary to maintain oiled the following parts: Nozzle O-rings ,gun o-rings , piston ring , gasket, breather valve and cap gasket.

5.1 MAINTENANCE GUIDE

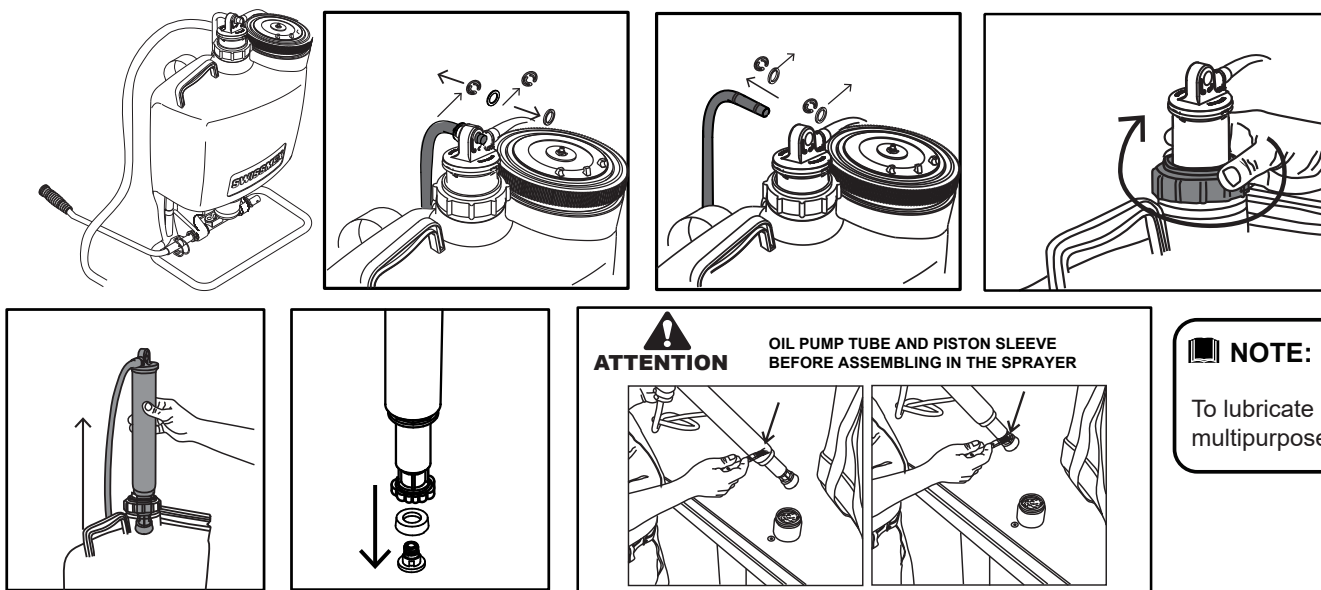
Below are instructions for maintaining your spray:

Rinse with clean water externally and internally, to avoid risk of contamination. To keep your sprayer in good condition it is recommended to change the following parts when servicing your sprayer (No. 501-204 -C1):

- Checks for O-rings and cylinder
- Gun o-rings
- Gasket
- Cap gasket
- Piston Ring
- O-rings for nozzle
- Breather valve

Disassembly instructions:

- 1.- Place the sprayer on a flat surface. Pull the pin from the upper end out of the pump lever.
- 2.- Loosen the pump holder nut and take the lever out.
- 3.- Pull out pump tube and check the plastic ball and the piston inside the tube, remove piston and make sure the ball and piston is clean and in good shape, if not replace it.
- 3.- Once you replace it, repeat this steps backwards. Do not forget to lubricate it.



ATTENTION OIL PUMP TUBE AND PISTON SLEEVE BEFORE ASSEMBLING IN THE SPRAYER

NOTE:

To lubricate all parts, use multipurpose grease.

6. TROUBLE SHOOTING GUIDE

PROBLEM	CAUSE	SOLUTION
The tank collapses when pressuring it.	The breather check needs lubrication.	Lubricate or replace it if it is damaged.
The piston sleeve does not run smoothly and it is hard to pump.	The agrichemical used has made the piston sleeve to swell up.	Replace the piston sleeve, lubricate it first.
The piston sleeve runs too smoothly and it does not keep pressure.	The piston sleeve is worn out or shrunk.	Replace the piston sleeve, lubricate it first.
Although the sprayer is being pumped vigorously it does not build pressure.	The plasticball is stuck or dirt is preventing the ball to sit properly on the ball-holder nut.	Clean the ball holder nut, and the ball, replace them if necessary.
When pumping a creak is produced between the pump tube and pump holder nut.	The pump tube and pump holder nut need lubrication.	Lubricate both of them.
The shut-off valve does not close after releasing the trigger.	The plunger O-rings are worn out or swollen.	Replace them and lubricate the plunger with the new O-rings.
The shut-off valve does not function when depressing the trigger.	The filter or nozzle are blocked.	Take the filter out of the shut-off valve, clean or replace it and clean the nozzle.

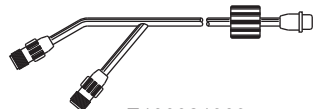
7. ACCESSORIES

SPRAY LANCES:

Brass spray lances (without spray tip, nut and gasket)



E1000803085 - 19.68" / 50 cm
E1000803400 - 15.74" / 40 cm



E1000219095
with two nozzles,
length 19.368" / 50 cm

FVR spray lances (without spray tip, nut and gasket)



E1000219136 - 19.68" / 50 cm
E1000219142 - 39.37" / 1.0 m
E1000219143 - 59.0" / 1.50 m
E1000219146 - 78.7" / 2.0 m

EXTENSION LANCE:

Brass extensions (with connector)



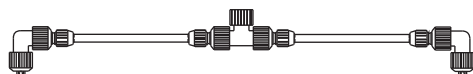
E1000219500 - 26.3" / 67 cm
E1000219510 - 39.37" / 1.0 m
E1000219520 - 47.24" / 1.20 m

2-nozzle brass extensions



E1999219098 - 15.74" / 40 cm

2-nozzle FVR extensions



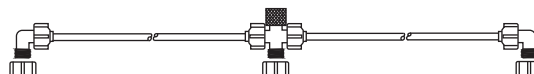
E1000219140 - 19.6" / 50 cm
E1000219147 - 39.37" / 20 cm
E1000219148 - 28.7" / 73 cm

3-nozzle FVR extensions



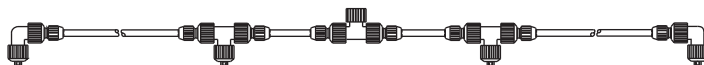
E1000219138 - 39.37" - de 1 m
E1000219151 - 59.0 de 1.5 m

3-nozzle brass extensions



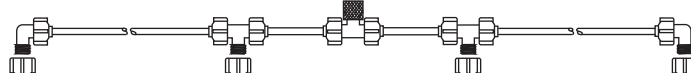
E1000219420 - 39.37 - 1.0 m

4-nozzle FVR extension



E1000219213 - 39.0" / 1.5 m

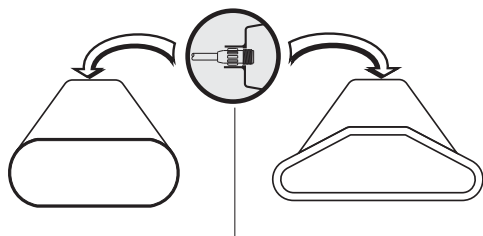
4-nozzle brass extension



E1000219097 - 59.0" / 1.5 m

SCREEN SHIELDS

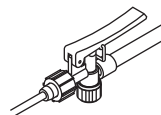
E1000219099 - 15.74" / 40 cm
E1000219117 - 8.6" / 22 cm



SHUT-OFFS

Shut-offs complete with filter and filter housing

Shut-offs without grip



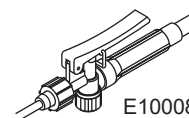
E1000803073



E1000809073

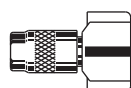


E1000808073



E1000807073

COMPLETE NOZZLES



E1000803092

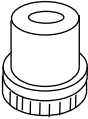
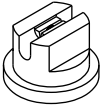



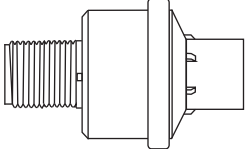
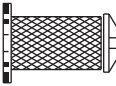


E1000219610



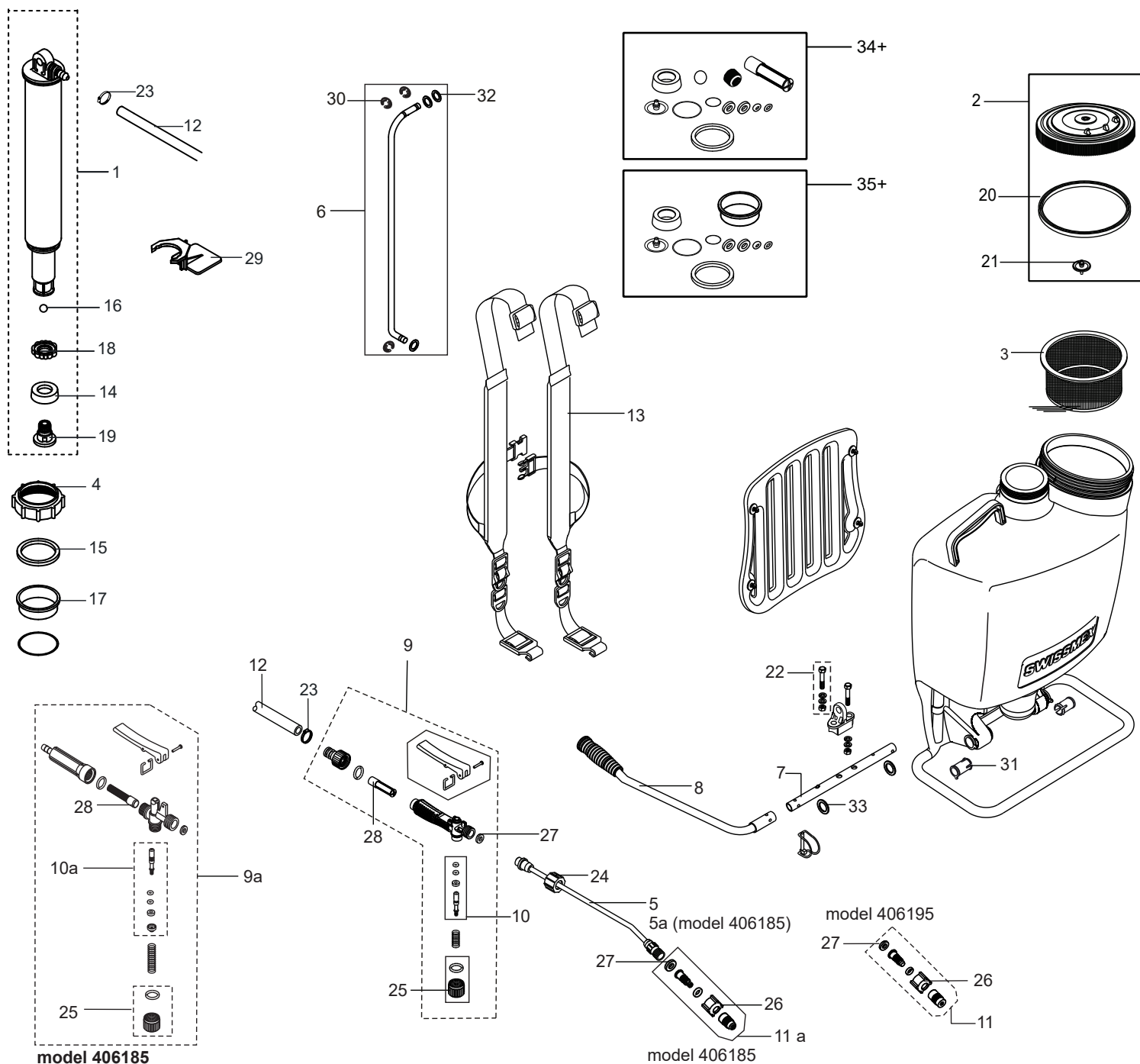
E1000219710

For more technical information please look into our Nozzle Chart at www.swissmex.com

<p>SPRAY TIPS</p> <div>  <p>E2002219013</p> </div> <div>  <p>E2888219006</p> </div>	<p>CARRYING STRAPS</p> <div>  <p>E1000080034 E1000501034 E1000501134</p> </div> <div>  <p>E1000501230</p> </div> <div>  <p>E1000501336</p> </div>
<p>PRESSURE REGULATORS</p> <div>  <p>E1016219002 E1888219001 E1016219001 E1016219003</p> </div>	<p>FILTERS</p> <div>  <p>E2888219011 E2002219026 E2002219027 E2888219012 E2998219028</p> </div>

7. SPARE PARTS LIST

A Spare parts and consumables always available.				B Medium-use parts, available at discretion			
Part No.	Code	Description	Qty.	Part No.	Code	Description	Qty.
2	E1000326001	TANK LID	1	11	E1000803092	ADJUSTABLE PLASTIC NOZZLE (model 406195)	1
14	E1000189054	PISTON	20	11a	E1000803262	ADJUSTABLE PLASTIC NOZZLE (model 406185)	5
18	E1000189021	PISTON DISK	10	12	E1000803177	HOSE	1
20	E1000501002	TANK LID GASKET	10	13	E1000501865	CARRYING STRAP	1
21	E1000501020	BREATHER VALVE	20	13a	E1000428034	CARRYING STRAP	1
24	E1000803059	NUT	10	15	E1000080008	FELT RING	30
25	E1000803064	PLASTIC CAP	1	16	E1000080022	PLASTIC CHECK BALL	30
26	E1000803090	NUT	50	17	E1000080201	BUSHING GUIDE	5
				19	E1000189033	PISTON FITTING	10
				22	E1000501045	BOLT AND NUT	10
				23	E1000501082	CLAMP	50
				27	E1000803215	GASKET	10
				28	E1000807074	FILTER	10
				29	E1000200050	AGITATOR	1
				30	E1000289014	LOCK PIN	20
				31	E1000501206	PUMP SHAFT BUSHING	10
				32	E1000326037	WASHER	20
				33	E1000501010	WASHER	10
B Medium-use parts, available at discretion							
Part No.	Code	Description	Qty.				
1	E1000289225	PRESSURE CHAMBER	1				
3	E1000501004	STRAINER	1				
4	E1000080003	PUMP HOLDER NUT	5				
5	E1000803085	SPRAY LANCE	1				
5a	E1000803219	SPRAY LANCE (model 406185)	1				
6	E1000406012	PUMP LEVER ASSY	1				
7	E1000406001	PUMP SHAFT	1				
8	E1000501394	PUMP HANDLE	1				
9	E1000808185	VALVE BODY	1				
9a	E1000807075	VALVE BODY (model 406185)	1				
10	E1000808065	PLUNGER ASSY	1				
10a	E1000803167	PLUNGER ASSY (model 406185)	1				



model 406185

+34 E1000189200 SEAL KIT

FELT RING	1	ORING (to nozzle body)	1
ORING	1	ORING (to cap)	2
PISTON	1	ORING (to plunger)	2
PLASTIC BALL	1	GASKET (to nozzle body)	2
NUT	1	GASKET (to plunger)	1
GASKET	1	FILTER	1

model 406195

+35 E1000406200 SEAL KIT

FELT RING	1	GASKET (to nozzle body)	2
PISTON	1	ORING (to plunger)	1
BREATHER CHECK	1	BUSHING GUIDE	1
ORING (to nozzle body)	1		
ORING (to nut)	2		
ORING (to plunger)	1		

NOTE: + Not supplied with unit, see sheet of accessories.

NOTE: In the interest of continued technologic progress specifications are subject to change without notice.

9. STORAGE

Always store the sprayer clean and empty in a dry place protected from the sun.

10. WARRANTY

SWISSMEX®

Any claim made under this warranty must adhere to the Warranty Policy described below:

The warranty will be granted by SWISSMEX RAPID SA DE CV when the product presents manufacturing, assembly or material defects and this has been established after conclusive analysis at Swissmex plant (Lagos de Moreno, Jalisco, Mexico). The warranty consists of replacement of damaged parts or replacement of damaged equipment depending on conclusions of the analysis of the claim. This warranty does not include labor installation costs or shipping costs.

The warranty of your product can be PREMIUM, MEDIUM or BASIC, depending on which category your equipment belongs to. You can check this on the Operator's Manual and our website at www.swissmex.com.

The applicable warranty period can be:

Advanced Line = 3 years
Professional Line = 2 years
Heavy duty = 1 year

THIS WARRANTY WILL BE INVALID UNDER THE FOLLOWING CIRCUMSTANCES:

1. When the product presents faults due to abuse, misuse or inadequate maintenance, lack of proper cleaning and rinsing according to the instructions contained in the Owner's manual.
2. For the purpose of this warranty the use of any chemical solution listed as dangerous or different from those recommended in the Operator's Manual will be considered as misuse.
3. When the product has undergone modifications or adaptations by unauthorized persons or by the use of spare parts that have not been provided by SWISSMEX-RAPID.
4. When the product has been damaged as a result of natural disasters.
5. When the fault is caused by normal wear of the parts due to use.

SWISSMEX-RAPID is not responsible for indirect or consequential damages arising from the use or operation of the product, damages resulting in personal injury, economic loss, loss of property, loss of income or profits or costs of removal, installation or reinstallation.

SWISSMEX-RAPID, makes no other express warranty with the exception of the one quoted here. This warranty gives you specific legal rights and you may have other rights that vary from country to country.

To make this warranty valid, contact your dealer and present proof of purchase.

Contac us / Contáctanos:
www.swissmex.com
exports@swissmex.com.mx
Calle Swissmex No. 500
Lagos de Moreno Jal. México
Tels: +52 474 741 2216
800 849 19 92