

# SWISSMEX®

## OPERATOR'S MANUAL MANUAL DEL OPERADOR

**2 YEAR**

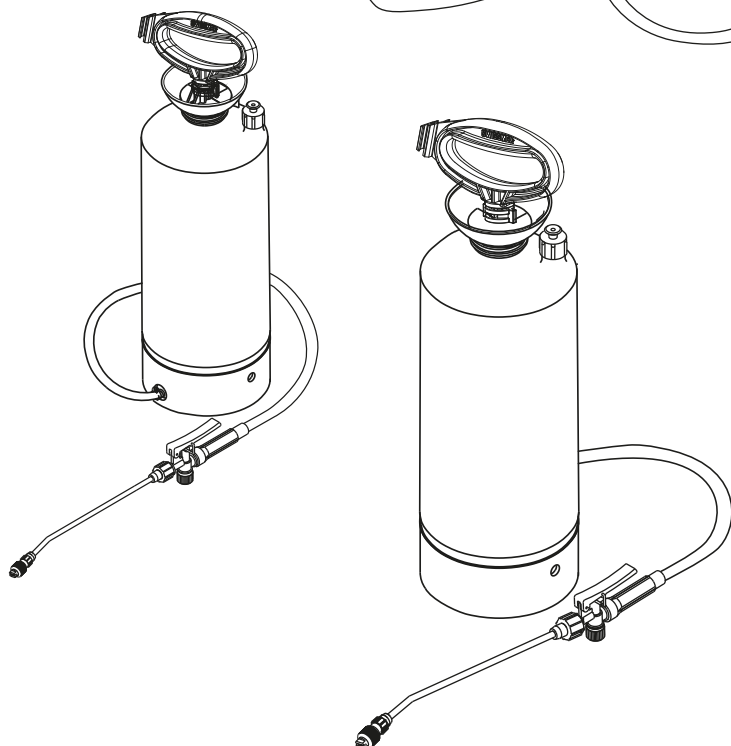
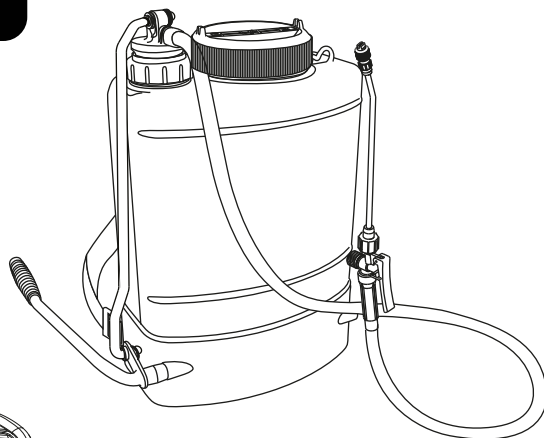
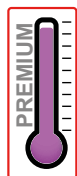
**WARRANTY**

SEE INSIDE FOR DETAILS

**2 AÑOS**

**GARANTÍA**

CONSULTE EL  
MANUAL EN EL INTERIOR



**INDUSTRIAL SPRAYERS TO BE USED  
MAINLY IN THE CONSTRUCTION MARKET**

**LÍNEA INDUSTRIAL  
APLICADORES PARA LA CONSTRUCCIÓN**

# ACETONE

**MODELS WITH CAPACITY OF:  
MODELOS CON CAPACIDAD DE:  
1.3, 1.7, 2.4 AND 4 US GAL /  
5, 6, 9,15 LITERS**

Series Industrial sprayers to be used mainly in the construction market with capacity of 1.3, 1.9, 2.3 Y 3.5 US GAL, specially designed for the application of ACETONE.

Línea industrial de aplicadores para ser usados principalmente en el mercado de la construcción, diseñados especialmente para la aplicación de ACETONA.

**MODELS / MODELOS**

**319305, 322310, 189310**

# INDEX / ÍNDICE

## ENGLISH VERSION

<b>1. Introduction.....</b>	<b>1</b>
<b>2. Safety Information .....</b>	<b>1, 2</b>
2.1 Protection equipment	
2.2 Safety measures	
<b>3. General information .....</b>	<b>2, 3, 4</b>
3.1 Main components	
3.2 Technical data	
3.3 Assembly	
3.3.1 Parts you are receiving	
3.3.2 How to assemble the sprayer	
<b>4. Operation .....</b>	<b>5</b>
<b>5. Service.....</b>	<b>6, 7</b>
5.1 Service guide	
<b>6. Common problems, possible causes and solutions .....</b>	<b>7</b>
<b>7. Accessories.....</b>	<b>8, 9</b>
<b>8. Spare parts.....</b>	<b>10</b>
<b>9. Storage.....</b>	<b>11</b>
<b>10. Warranty .....</b>	<b>11</b>

## VERSIÓN EN ESPAÑOL

<b>1. Introducción.....</b>	<b>12</b>
<b>2. Información de Seguridad .....</b>	<b>12</b>
2.1 Equipo de protección	
2.2 Medidas de seguridad	
<b>3. Información General .....</b>	<b>13</b>
3.1 Componentes principales	
3.2 Datos Técnicos	
3.3 Ensamble	
3.3.1 Partes que usted recibirá	
3.3.2 Cómo ensamblar su aplicador	
<b>4. Operación .....</b>	<b>14, 15</b>
<b>5. Servicio.....</b>	<b>16</b>
5.1 Guía de servicio	
<b>6. Posibles problemas y soluciones.....</b>	<b>17</b>
<b>7. Accesorios.....</b>	<b>18</b>
<b>8. Refacciones.....</b>	<b>19, 20</b>
<b>9. Almacenamiento.....</b>	<b>21</b>
<b>10. Garantía .....</b>	<b>21</b>

## 1. INTRODUCTION

Thank you for buying a Swissmex equipment, we guarantee that the product you have acquired was made with an unbeatable quality, because it was developed with state of the art technology following all quality standards required. This equipment was carefully designed and built with the purpose of providing the maximum performance, economy and ease of operation. It is very important that the operator knows all the information contained in this manual, read it before operate it, follow the recommendations step by step and keep it at hand to consult it when necessary.



This manual contains important safety warnings, please read it carefully to avoid any possible accident. Keep all warning stickers and if necessary replace them.

Each Industrial Series model has been designed to apply a specific kind of chemical whether it be solvents, acids or acetone. Using the correct chemical for each model will make sure the success of the application and the maintenance in good condition of the equipment.

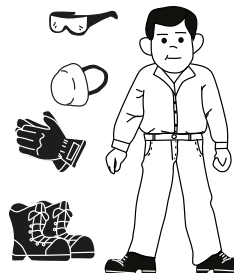
## 2. SAFETY INFORMATION

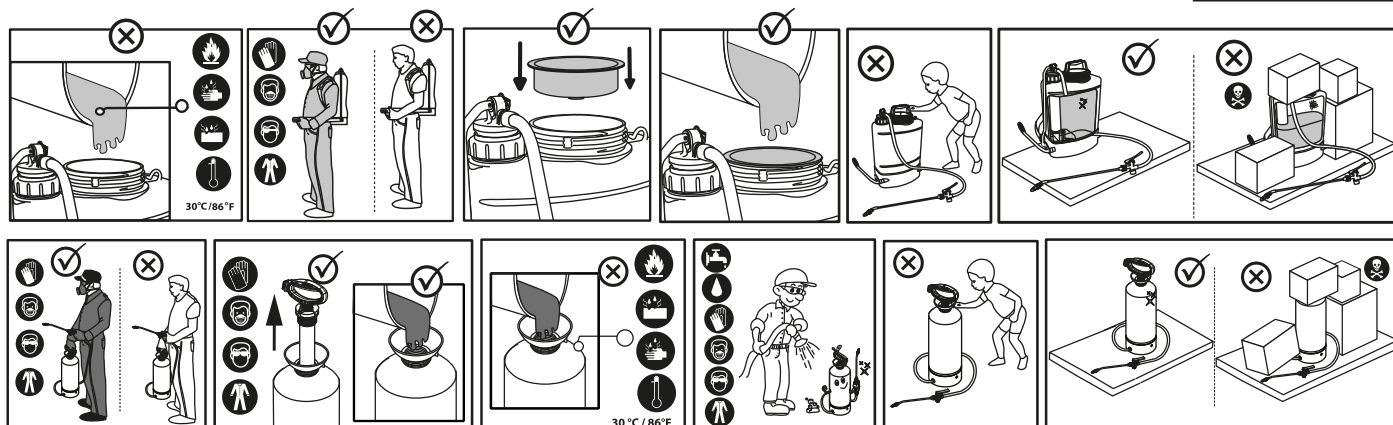
### 2.1 PROTECTION EQUIPMENT

- Industrial gloves
- Safety glasses
- Closed toe footwear
- Safety Clothes
- Safety mask

### 2.2 PROTECTION EQUIPMENT

- Read this manual carefully before operating the equipment.
- Incorrect handling by not qualified persons may cause serious accidents.
- Do not make modifications or adaptations because they can compromise your equipment and put your safety and that of a third party at risk. They also invalidate the warranty.
- Do not allow the presence of children, the elderly, people with disabilities or animals when using the equipment.
- Keep your equipment in good condition and in a safe place. Always wash and store your equipment without pressure.
- Read and follow the instructions of the chemical product you are going to apply.
- Wear the personal protective equipment mentioned above when using, filling or washing your sprayer
- Keep connections tight to prevent leaks.
- Never fill your sprayer with hot liquids, maximum: 30 ° C = 85 ° F.





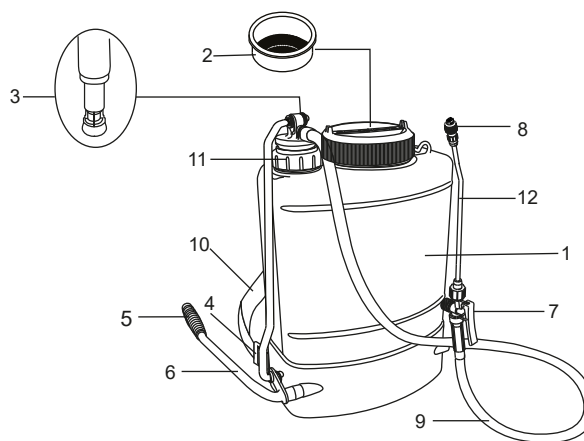
**Important:** this sprayer is designed to be used with chemicals and products in concentrations not higher than 5% than marked, that are compatible with the materials of this unit, using products that are not compatible with this materials can cause damage in the user and the unit. Warranty will apply only when the chemicals and products used with this unit are compatible with it.

## 3. GENERAL DATA

### 3.1 MAIN COMPONENTS

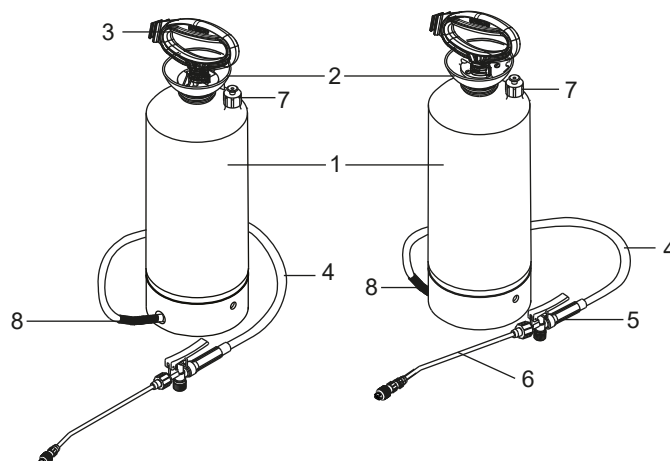
#### 189310 Acetone sprayer:

1. Tank
2. Filling port, tank lid & strainer
3. Pump system
4. Strap hook
5. Ergonomic grip
6. Pump handle
7. Shut-off valve
8. Adjustable nozzle
9. Hose
10. Adjustable carrying straps
11. Connecting rod
12. Spray lance



#### Compression sprayers:

1. Tank
2. Filling port
3. Complete pump handle
4. Hose
5. Shut-off valve with filter holder
6. Spray lance with nut and tip
7. Pressure relief valve
8. Spring



## 3.2 TECHNICAL DATA

ESPECIFICACIONES				
Model number:	319295	322310	189310	
Useful capacity	1.3 GAL / 5 L	2.9 GAL / 9 L	3.9 GAL / 15 L	
Carrying straps	Non-absorbent polyester, 38 mm wide			
Pump system	Piston			
Piston sleeve	Elastomer, 38 mm diameter			Elastomer 45 mm
Working pressure	1.5 a 2.5 bar - 22 a 36 psi			1 a 6 bar -87 psi
Approx.weight	2.3 kg 5 lb	3.1 kg 6.8 lb	5 kg - 11lb	
Hose	EPDM, 1.5 m = 59" long			
Shut-off	On/off valve with filter, lock for continuous spraying			
Spray lance	Brass 52 cm=20.5"			
Nozzle	Fan plastic & hollow cone ceramic			

## 3.3 ASSEMBLY

### 3.3.1 Parts you are receiving

#### 189310 Acetone sprayer:

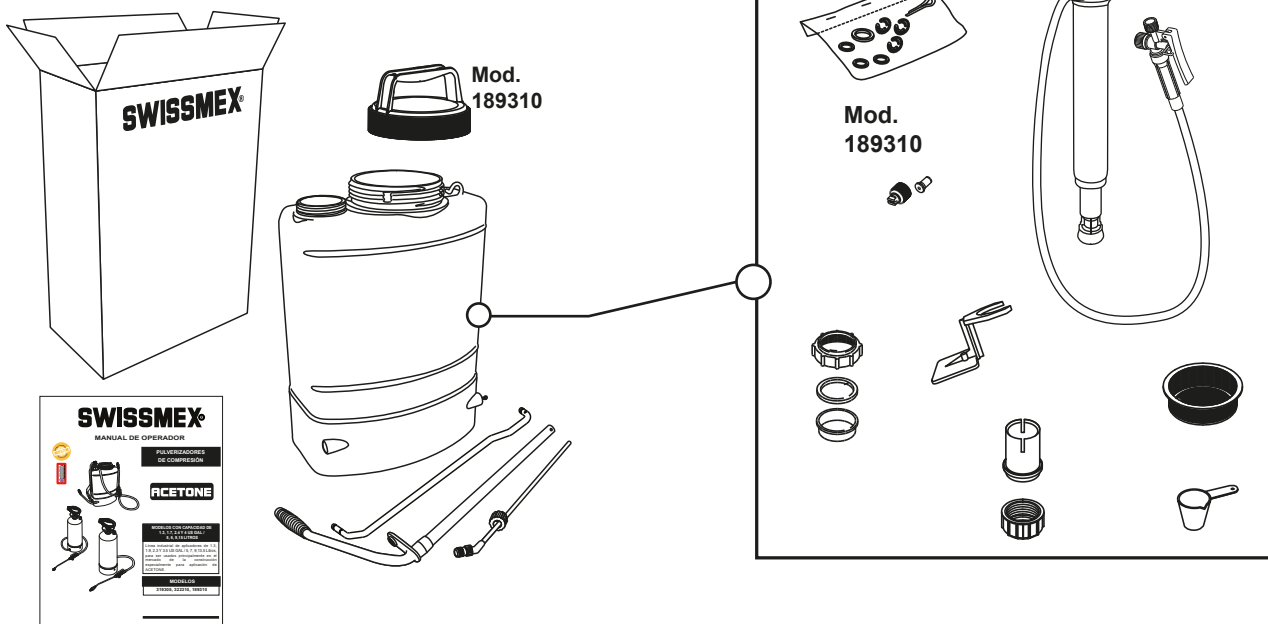
- 1 Pump handle
- 1 Spray lance
- 1 Tank lid
- 1 Connecting rod
- Brochures

Inside the tank you will find:

- 1 Strainer
- 1 Dosing cup
- 1 Agitator

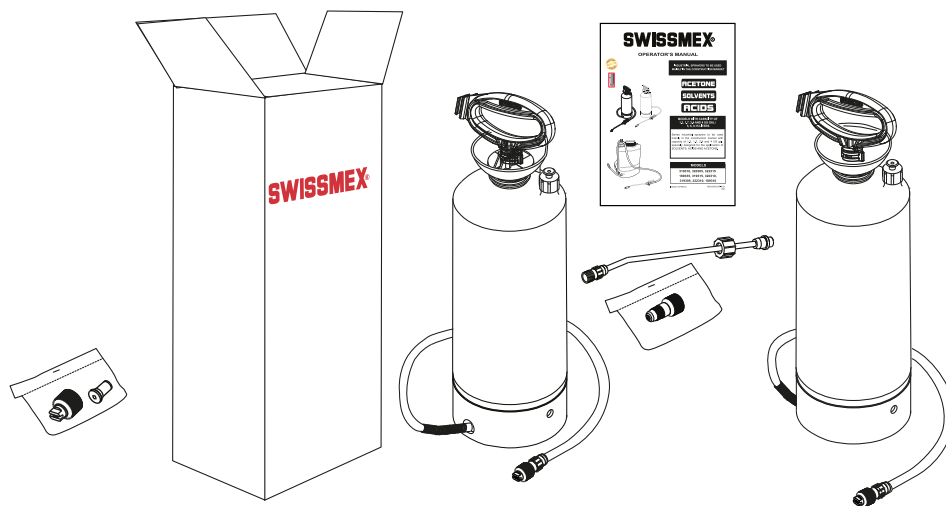
In a plastic bag you will find:

- 1 Adjustable nozzle with nut
- 3 Lock pin "C"
- 3 washers
- 1 Lock washer
- 1 Cotter pin or lock pin "R"



### Compression sprayers:

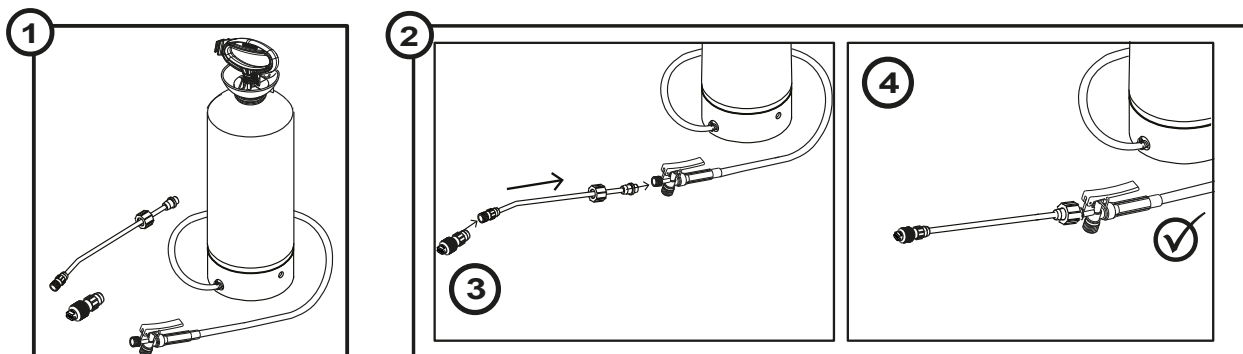
- Complete tank with pump handle, pressure relief valve, hose and shut off
- 1 Spray lance
- 1 Adjustable nozzle
- 1 Hollow cone spray tip with nut
- 1 Flat fan spray tip with nut
- Operator's manual



### 3.3.2 How to assemble the sprayer:

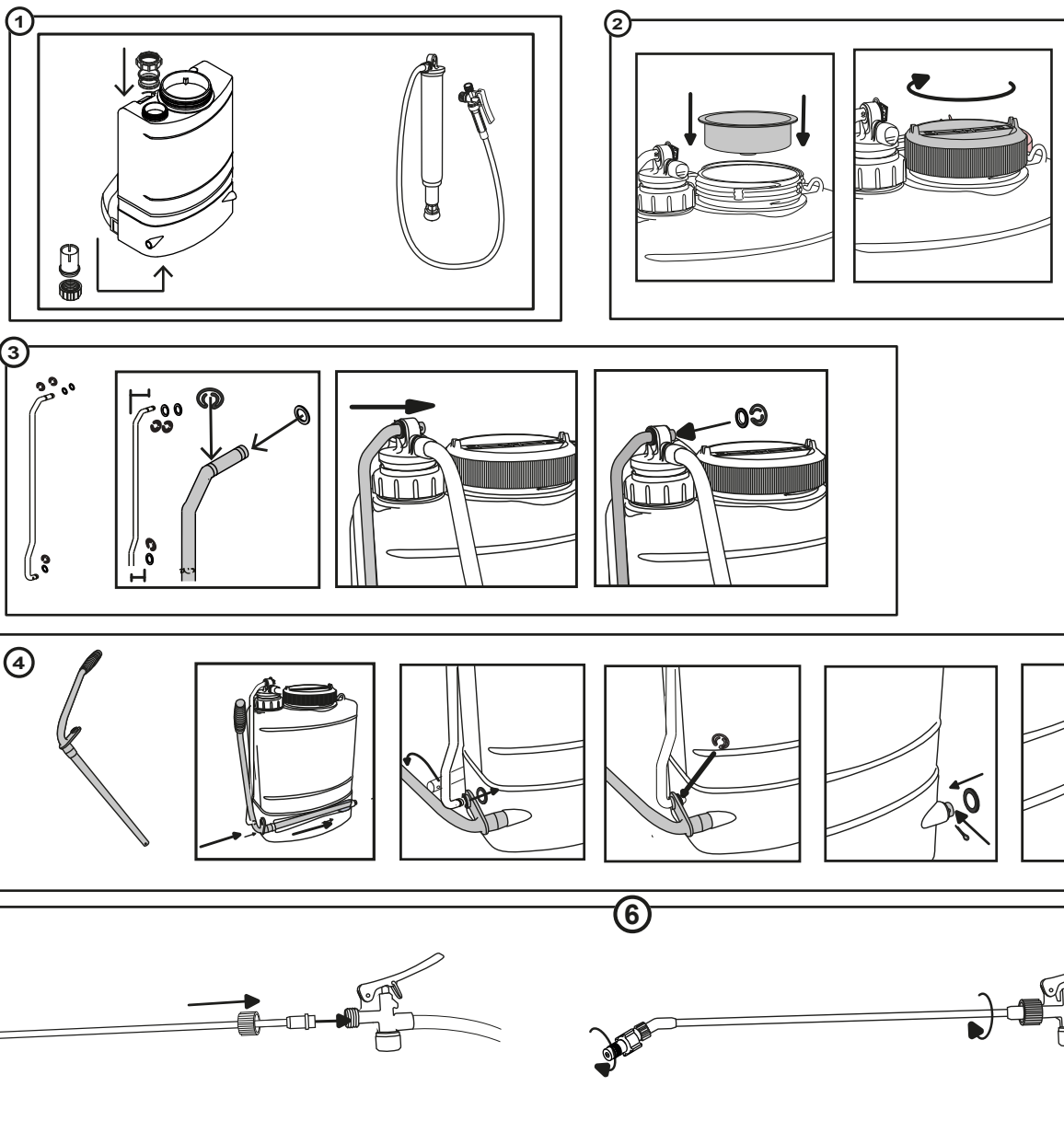
#### Compression sprayers:

1. Remove all the parts from the box and tank.
2. After removing the nozzle from the bag fix it in the spray lance.
3. Place the applicator upright on a table, assemble the spray tube with the gun and tighten firmly.
4. Your sprayer is ready to use.



#### Backpack sprayer:

- 1.- Take the loose parts out of the tank.
- 2.- Place the strainer on the filling port and then the tank lid.
- 3.- Insert the connecting rod in the pump tube placing one flat washer on each side, fix them with the lock pins "C".
- 4.- Pass the pump handle through the base of the tank fixing it to the connecting rod with a flat washer and a lock pin "C" and on the other end with a lock washer and a cotter pin.
- 5.- Assemble the nozzle to the spray lance. Lightly tighten without tools.
- 6.- Assemble the spray lance to the shut-off and tighten manually. Make sure the gasket is in place.



## 4. OPERATION

### Compression sprayer:

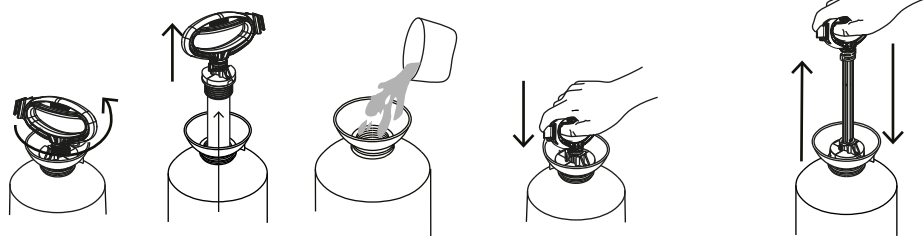
- Mix the solution in a separate container following the instructions of the product manufacturer.
- Unscrew the pumping tube and remove it from the tank.
- Pour the pre-mixed solution up to the indicated level marked in the tank.
- Replace the pump tube and screw it tightly, then pressurize the unit.
- Hold the sprayer by the handle or place it on the shoulder with the carrying strap and start applying.
- Turn the nozzle to change the spray pattern (Solvent models 319310, 320305 & 322315).

#### **NOTE:**

The pump tube must be tight firmly otherwise the applicator will leak and will not hold pressure.

#### **NOTE:**

To ensure the best performance use only "SWISSMEX-RAPID" original spare parts.



### Backpack sprayer:

- Always use the strainer when filling the tank.
- Mix the solution in a separate container following the instructions of the product manufacturer.
- Pour the pre-mixed solution into the tank and place the lid.
- Put the applicator on your back and pressurize it by pumping 15 to 20 times
- Pump every 3 or 4 seconds to maintain the desired pressure.
- For continuous application, secure the shut-off lever with the lock hook.
- Turn the nozzle to change the spray pattern (Solvent model 189335).

### NOTE:

To ensure the best performance use only "SWISSMEX-RAPID" original spare parts.

## 5. SERVICE

The applicator requires minimum maintenance. Follow in detail the steps mentioned in this manual and the useful life of the equipment will be very long. At the end of your spraying job, don't leave the applicator with pressure, let all the pressure release through the nozzle, then remove the lid and the tank strainer (backpack sprayer) or unscrew the pump handle (compression sprayer) and turn over the sprayer to empty the remaining solution in an appropriate container for it. Now rinse the entire sprayer system with fresh water, as follows:

- Pour ½ gal of fresh water into the tank and pressurize, flush the pumping system by depressing trigger at least 2 minutes, then remove the lid and the tank strainer (backpack sprayer) or unscrew the pump handle (compression sprayer) and turn over the sprayer to empty the remaining water. Do this regularly and it will prolong the life of gaskets and seals.
- The carrying straps are made of non-absorbent material, however in case of spilling a solution you should wash the straps and tank with fresh water to eliminate any possible risk of skin irritation.
- Always follow the instructions for use of the products you are applying to avoid accidents and make the most of the product.
- Always store the sprayer clean and empty in a dry place protected from the sun.

### 5.1 SERVICE GUIDE

**NOTE:** To keep your sprayer in optimal condition, keep the following parts always greased: shut-off O rings, Piston sleeve, Pump tube O rings, Plunger O rings, Nozzle O ring and pressure relief valve O ring.

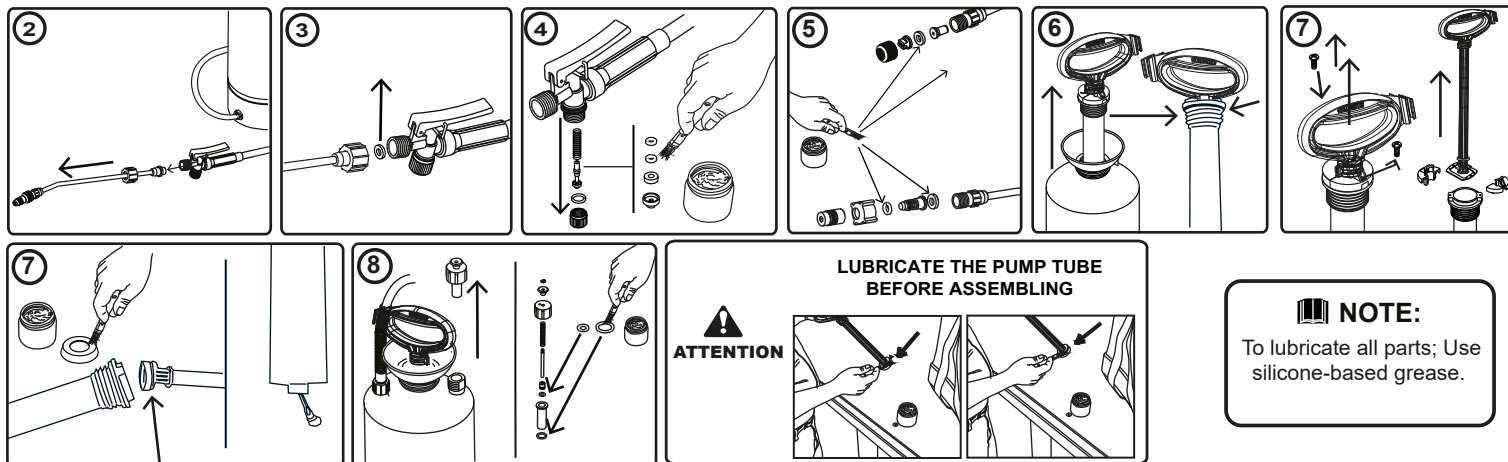
Wash the sprayer inside and outside with fresh water, to be able to handle it without contamination risk.

It is recommended to replace all wear parts when performing a repair job:

- Piston sleeve,      - Shut-off O rings,      - Pump tube O rings,      - Plunger O rings,
- Nozzle O ring      - Nozzle gasket and      - Pressure relief valve O ring

#### Instructions for compression sprayers:

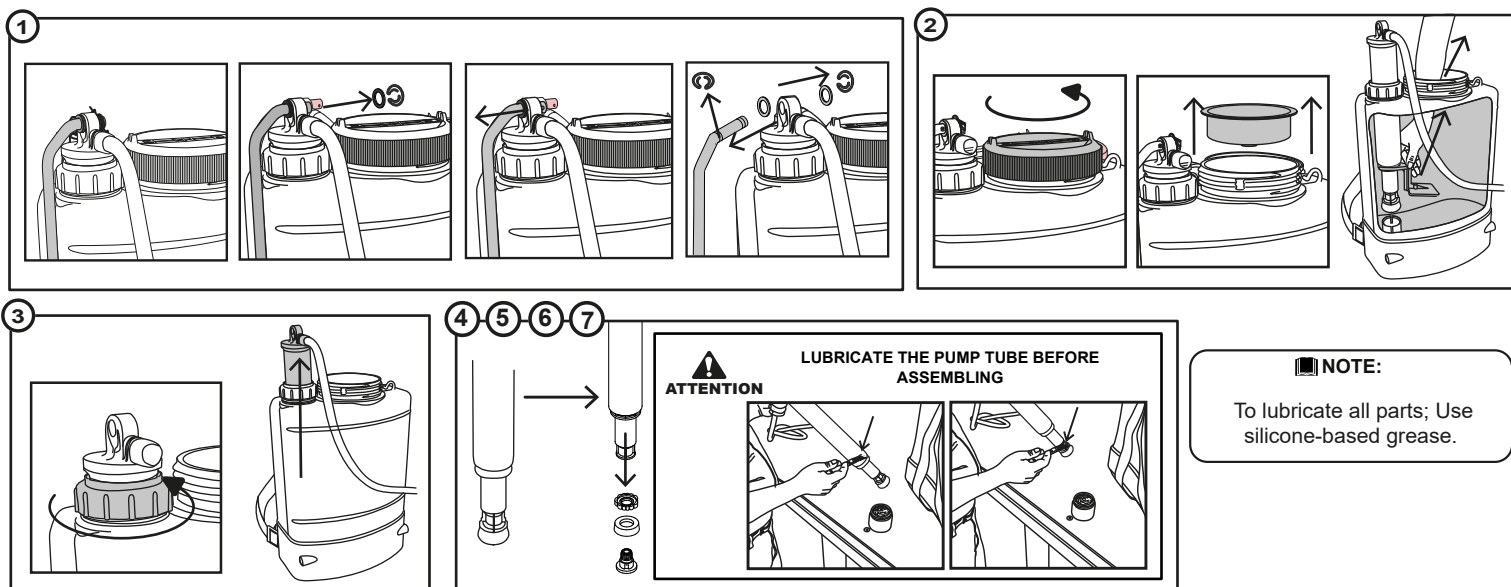
- 1.- Change the wear parts in the pump tube, shut-off, spray lance and nozzle if your sprayer is leaking or as preventive maintenance.
- 2.- Unscrew the nut between spray lance and shut-off.
- 3.- Change gasket located between nut and shut-off.
- 4.- The shut-off is comprised by several pieces, remove the lower plug and replace gasket, remove plunger and replace the two o-rings and gasket. Lubricate before assembly.
- 5.- Unscrew the nozzle and replace O-ring and gasket, lubricate.
- 6.- Remove the pump tube from the tank and replace O ring located in the upper part, lubricate before assembling.
- 7.- Remove screws of the pump tube, remove handle, in the lower part replace and lubricate the the piston sleeve. Remove the antenna from the lower end of the pump tube and replace the O ring.
- 8.- On models 319 and 320 remove relief valve to lubricate or change the o-rings if needed.





### Instructions for dismantling the Solvents backpack sprayer model 189335:

- 1.- Place the sprayer in a vertical position on a flat surface. Remove the washers and lock pin "C" from the top of the connecting rod. Remove the connecting rod from the pump tube, taking care of not losing washers and lock pins.
- 2.- Remove the lid and the strainer, proceed to remove the agitator.
- 3.- Loosen tank guide nut. Pull out pump tube.
- 4.- Loosen the piston holder bolt. (press its slot against the top edge of the pump handle connector and unscrew the pump tube counter-clockwise)  
To check the ball valve, remove piston holder and make sure the seal is clean and in good shape if not replace it.  
Take care when reassembling that the piston sleeve is placed with the cutting edge facing the piston.
- 7.- To reassemble the sprayer follow the previous steps in reverse.



## 6. COMMON PROBLEMS, POSSIBLE CAUSES & SOLUTIONS

Compression sprayer		
PROBLEM	CAUSE	SOLUTION
The piston does not slide easily and there is noise between the pump tube and the piston.	There is no lubrication between the pump tube and the piston sleeve.	Check the piston sleeve. If it is worn-down replace it and grease it, if not just grease the edges.
The pump system leaks.	The antenna does not seal correctly in the seat of the pump tube.	Check the antenna and if necessary replace the seal. Lubricate before reassembling.
Shut-off leaks after releasing the handle.	The O rings of the shut-off plunger are worn-down or swollen.	Replace and grease the new O rings and plunger
The sprayer is pressurized but there is no flow when pressing the shut-off handle.	The hose is clogged.	Loosen the hose clamp and check if the hose or the tank outlet are clogged and if so, proceed to unclog them with pressurized air or water
Although the sprayer is being pumped vigorously it does not build pressure.	The pump tube is not tight enough.	Tighten the tube and grease the O ring.

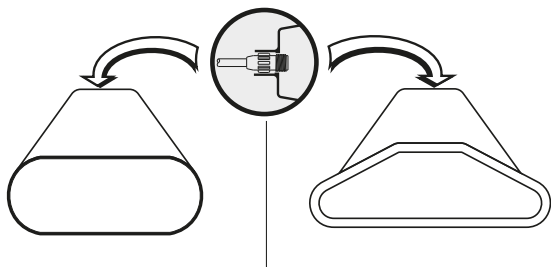
Backpack sprayer		
PROBLEM	CAUSE	SOLUTION
The tank collapses when pumped.	Breathing check is blocked.	Lubricate or replace it if worn-down
The piston sleeves do not slide smoothly and pumping is difficult.	The piston sleeve is swollen .	Replace and lubricate the piston sleeve.
The piston sleeve slides too easily and the sprayer does not build pressure .	The piston sleeve is worn-down or shrunk.	Replace and lubricate the piston sleeve.
The sprayer does not build pressure after being pumped.	The check ball is stuck or debris in the check ball holder avoids it sits properly.	Remove debris and replace the check ball if necessary.
When pumping a squeak is heard between the pump tube and guide nut.	The pump tube and guide nut need lubrication.	Lubricate both parts.
Shut-off leaks after releasing the handle.	The O rings of the shut-off plunger are worn-down or swollen.	Replace the ne O rings and grease them along with the whole plunger.
There is no liquid flow when pressing the shut-off handle.	The filter or the nozzle are blocked.	Clean or replace the filter and clean the nozzle.



## 7. ACCESSORIES

### SCREEN SHIELDS

E1000219099 40 cm  
E1000219110 40 cm translucent  
E1000219117 22 cm ( 3/8")



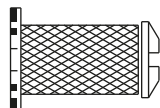
### EXTENSION LANCE:

#### Extentions for construction lines

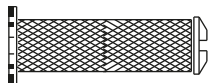


E1000219511 brass with EPDM Seals for Acetone 1.0 m.  
E1000219512 brass with FKM Seals for Solvent/Form Oils 1.0m  
E1000219513 PVC with NBR Seals for Acid 1.0m

### FILTERS



E2888219011 Antidrip, 50 mesh, blue  
E2002219026 Antidrip, 80 mesh, yellow  
E2002219027 Antidrip, 100 mesh, green  
E2888219012 No antidrip, 50 mesh, blue  
E2002219078 No antidrip, 80 mesh, yellow

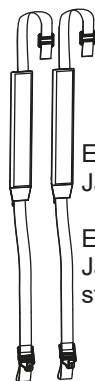


E2888219013 No antidrip, 73 mm, 50 mesh

### CARRYING STRAPS



E1000080034 Complete strap  
E1000120334 Economic strap  
E1000501034 Economic strap  
with shoulder pad  
E1000501134 Complete strap  
with shoulder pads  
E1000501135 10 traps kit



E1000501230  
Janisset strap  
E1000501268  
Janisset economic  
strap

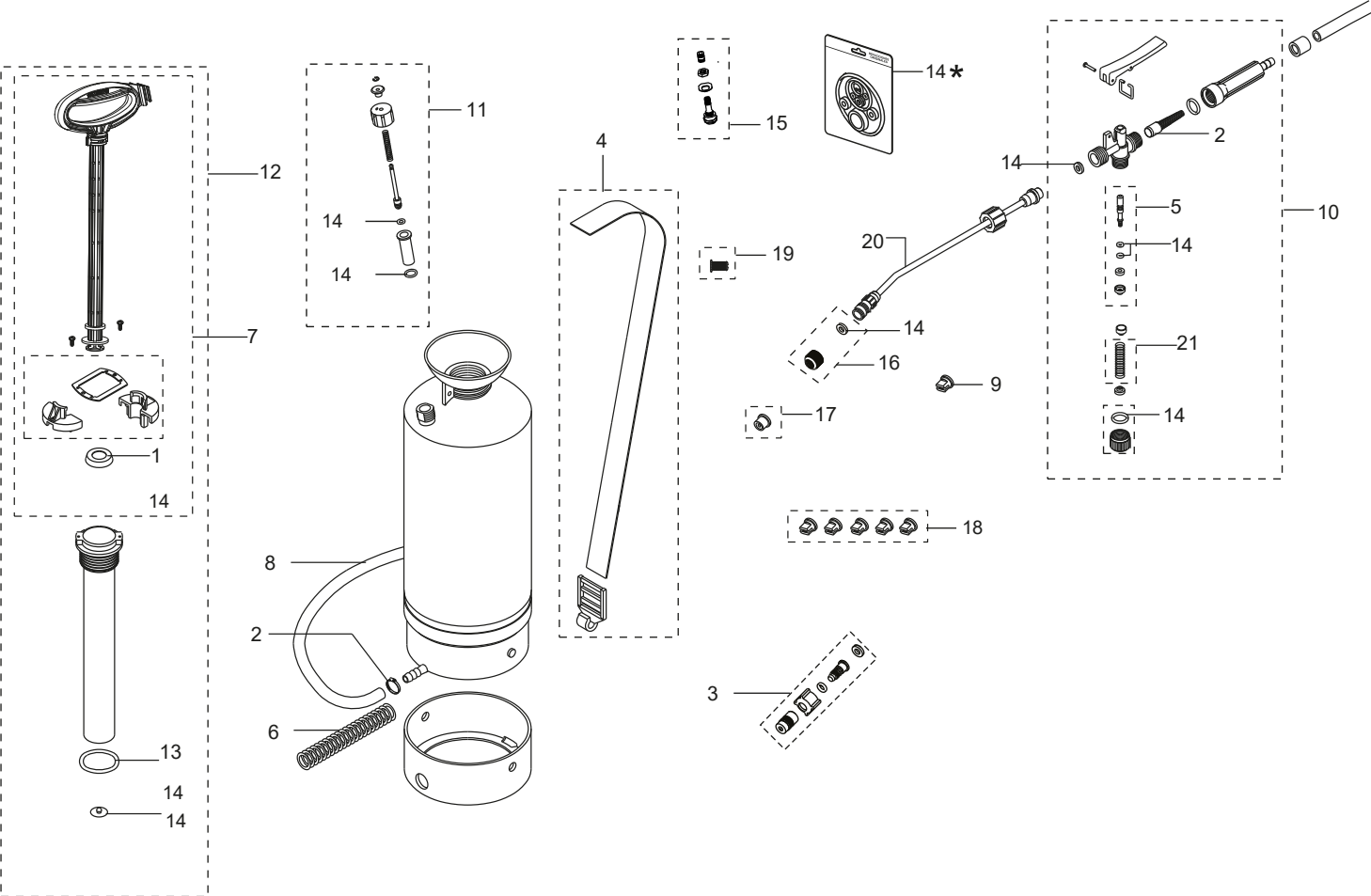
E1000501336  
Janisset strap with  
hook ring style




**NOTE:** These accesories are not special for the construction line. For more info. please contact your sales rep.  
Or : [www.swissmex.com](http://www.swissmex.com)

8. SPARE PARTS

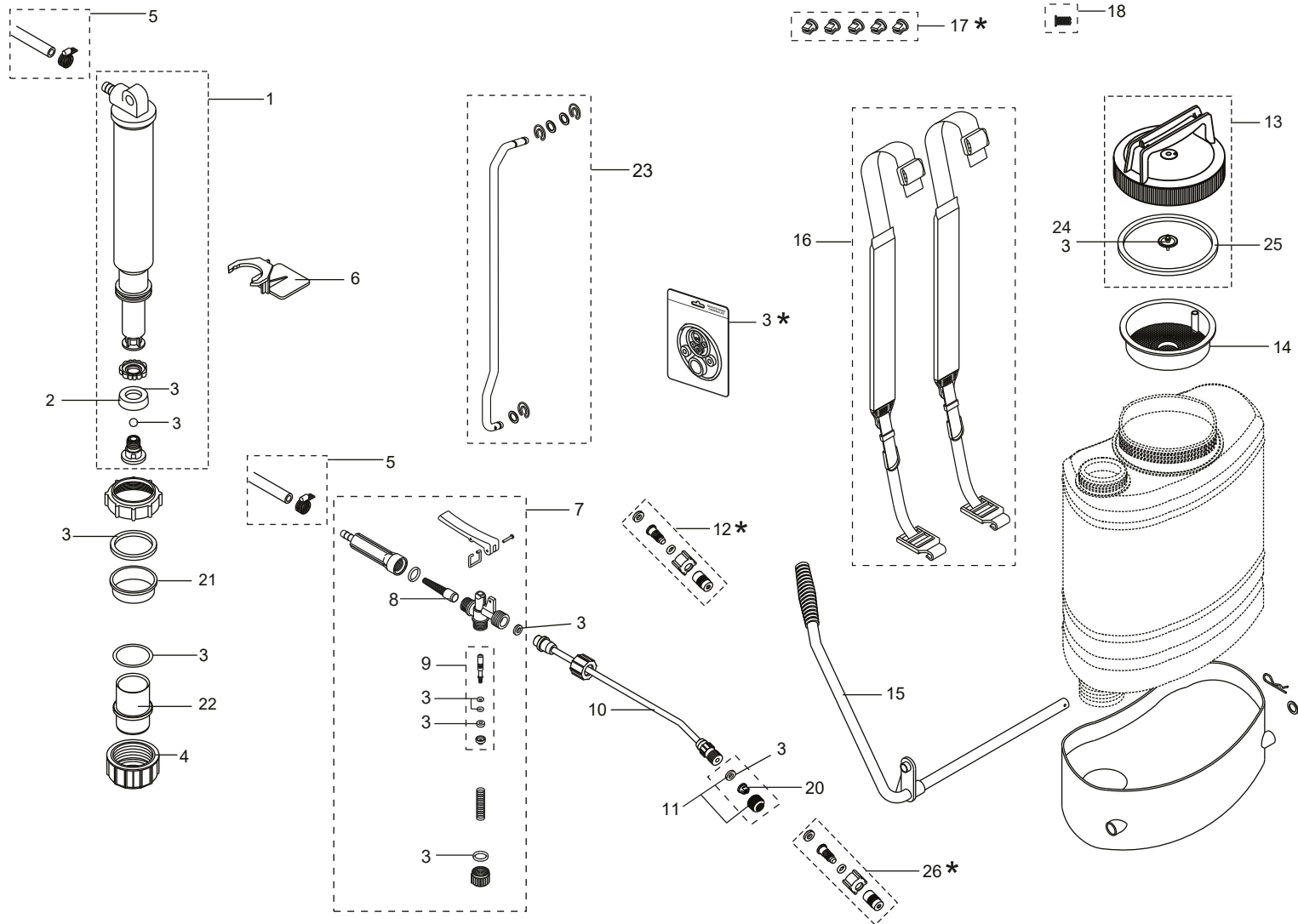
ACETONE 10/30



A Spare parts and consumables always available.					B Medium-use parts, available at discretion.				
No.	Code	Description	Qty.	Qty. per bag	No.	Code	Description	Qty.	Qty. per bag
1	E1000120029	PUMP PLUNGER	1	20	4	E1000120334	COMPLETE STRAP	1	1
2	E1000807074	FILTER	1	10	5	E1000806166	COMPLETE SPINDLE SET	1	5
3 *	E1000803092	COMPLETE BRASS NOZZLE WITH EPDM SEALS	1	1	6	E1000803233	HOSE SPRING	1	1
9	E1000216050	BLUE FAN TIP	1	10	7	E1000320314	COMPLETE PUMP HANDLE	1	1
10	E1000806075	COMPLETE SPRAY GUN	1	1	8	E1000803683	HOSE SET WITH 2 HOSE CLAMPS	1	1
13	E1000120340	O-RING FOR PUMP TUBE	1	10	11	E1000120330	PRESSURE RELIEV VALVE	1	1
14 *	E1000320201	FULL SETS OF SEALS AND O RINGS	1	1	12	E1000320223	COMPLETE PUMP MODULE	1	1
17	E1888216045	GRAY CERAMIC CONE TIP	1	10	15	E1888319008	SCHRADER VALVE	1	10
18 *	E1888216046	5 CONE TIP KIT	1	1	16	E1000219216	NOZZLE HOLDER WITH SEAL	1	1
19	E2888219011	ANTI-DRIP FILTER	1	10	21	E1000803067	SPRING	1	10
20	E1000803085	20" BRASS SPRAY WAND	1	1					

 **NOTE:** In the interest of continued technologic progress specifications are subject to change without notice.

Please note that marked \* Not supplied with unit.

 19

**B** Medium-use parts, available at discretion.

No.	Code	Description	Qty.	Qty. per bag
3 *	E1000189201	COMPLETS SET OF SEALS	1	1
12 *	E1000806090	COMPLETE PLASTIC NOZZLE WITH EPDM SEALS	1	1
17 *	E1888216046	5 CONE TIP KIT	1	1
18	E2888219011	ANTI-DRIP FILTER	1	10
19	E1888216045	GRAY CERAMIC CONE TIP	1	10
20	E1000216050	BLUE FAN TIP	1	10
26 *	E1000803092	BRASS ADJUSTABLE NOZZLE WITH EPDM SEALS	1	1

Please note that marked \* Not supplied with unit.

No.	Code	Description	Qty.	Qty. per bag
1	E1000189150	COMPLETE PUMP TUBE	1	1
2	E1000189054	PISTON	1	20
4	E1000189025	HOLDING CAP FOR CYLINDER	1	5
5	E1000803683	HOSE SET WITH 2 HOSE CLAMPS	1	1
6	E1000200050	AGITATOR	1	1
7	E1000806075	COMPLETE SPRAY GUN	1	1
8	E1000807074	FILTER	1	10
9	E1000806166	COMPLETE SPINDLE SET	1	5
10	E1000803085	20" BRASS SPRAY WAND	1	1
11	E1000219216	NOZZLE HOLDER WITH SEAL	1	1
13	E1000501301	GRAY TANK LID	1	1
14	E1000501004	6" STRAINER FOR TANK LID	1	1
15	E1000189116	METAL PUMP HANDLE WITH PLASTIC GRIP	1	1
16	E1000501230	COMPLETE STRAP (2)	1	1
21	E1000080201	NYLON GUIDE	1	5
22	E1000189124	CYLINDER	1	1
23	E1000189115	METAL PUM LEVER WITH LOCKING PINS	1	1
24	E1000120343	CHECK VALVE FOR LID	1	20
25	E1000501076	SEAL FOR 6" LID	1	1

## 9. STORAGE

---

Always store the sprayer clean and empty in a dry place protected from the sun.

## 10. WARRANTY

---

# SWISSMEX®

Any claim made under this warranty must adhere to the Warranty Policy described below:

The warranty will be granted by SWISSMEX RAPID SA DE CV when the product presents manufacturing, assembly or material defects and this has been established after conclusive analysis at Swissmex plant (Lagos de Moreno, Jalisco, Mexico). The warranty consists of replacement of damaged parts or replacement of damaged equipment depending on conclusions of the analysis of the claim. This warranty does not include labor installation costs or shipping costs.

The warranty of your product can be PREMIUM, MEDIUM or BASIC, depending on which category your equipment belongs to. You can check this on the Operator's Manual and our website at [www.swissmex.com](http://www.swissmex.com).

The applicable warranty period can be:

Premium Line = 12 months

Medium Line = 6 months

Basic Line = 3 months

THIS WARRANTY WILL BE INVALID UNDER THE FOLLOWING CIRCUMSTANCES:

1. When the product presents faults due to abuse, misuse or inadequate maintenance, lack of proper cleaning and rinsing according to the instructions contained in the Owner's manual.
2. For the purpose of this warranty the use of any chemical solution listed as dangerous or different from those recommended in the Operator's Manual will be considered as misuse.
3. When the product has undergone modifications or adaptations by unauthorized persons or by the use of spare parts that have not been provided by SWISSMEX-RAPID.
4. When the product has been damaged as a result of natural disasters.
5. When the fault is caused by normal wear of the parts due to use.

SWISSMEX-RAPID is not responsible for indirect or consequential damages arising from the use or operation of the product, damages resulting in personal injury, economic loss, loss of property, loss of income or profits or costs of removal, installation or reinstallation.

SWISSMEX-RAPID, makes no other express warranty with the exception of the one quoted here. This warranty gives you specific legal rights and you may have other rights that vary from country to country.

To make this warranty valid, contact your dealer and present proof of purchase.

**Contac us / Contáctanos:**  
**[www.swissmex.com](http://www.swissmex.com)**  
**[exports@swissmex.com.mx](mailto:exports@swissmex.com.mx)**  
**Calle Swissmex No. 500**  
**Lagos de Moreno Jal. México**  
**Tels: + 52 474 741 2216**  
**800 849 19 92**