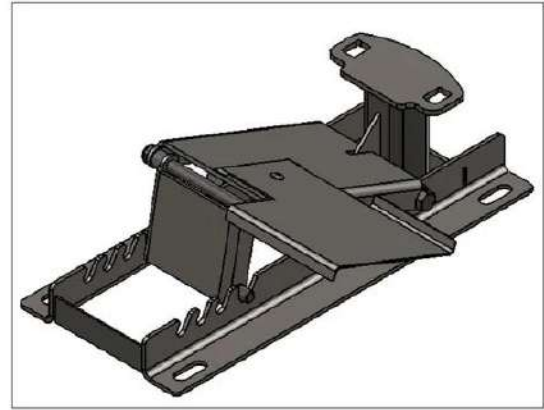




PCA-1805

INSTRUCTIONS

WINCH ANCHORING SYSTEM FOR FLOORS



Using the winch anchoring system for floors:

- 1- Fix the extension plate to the system with the 1/4-20 X 5/8 mechanical screw and the 1/4-20 half nut.
- 2- Fix the anchoring system to the ground (hardware not included) and make sure it is aligned with the electrical board (or the load).
- 3- Adjust the pulling angle to the distance and the height of the electrical board (or the load). Insert the position bar to the desired level.
- 4- Attach the winches anchoring hooks to the rectangular holes of the anchoring system.
- 5- Wrap the rope around the drum and start winching.

⚠ WARNING

AFTER PULLING FOR A FEW SECONDS WITH THE WINCH, RELEASE THE TENSION AND CHECK THE STABILITY OF THE INSTALLATION AND TIGHTEN IF NEEDED.

⚠ CAUTION

IF THE ROPE MUST GO DOWNWARDS, (EX. A MAN HOLE), YOU MUST INSTALL EITHER A PULLEY OR A ROLLER TO PREVENT DAMAGE TO THE WINCH SUPPORT PLATE AND/OR THE ROPE...

