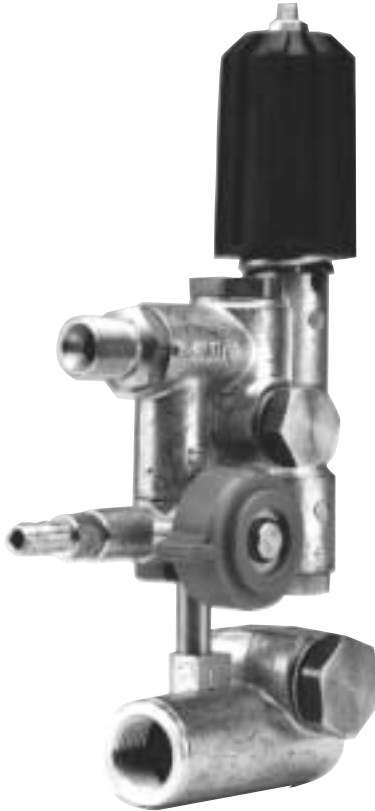


Trapped Pressure Control Set Unloader

Models W2.1, W2.1L, W2.2L
TRAPPED PRESSURE CONTROL SET UNLOADER
 with Chemical Injector



FEATURES

- Reduces Cost – Eliminates the need for fittings and bypass hose.
- Compact Design – Features forged brass body and hardware.
- Versatile – Mounts in seconds to either side of pump manifold.
- Adjustable Unloader Valve – Trapped pressure type with internal bypass system
- Built-In Chemical Injector – Includes variable metering adjustment.

SPECIFICATIONS

Flow Range:	W2.1, W2.1L	2.9-4.5 GPM
	W2.2L	4.5-6.0 GPM
Maximum Pressure	3000 PSI	
Maximum Temperature	200° F	
Port Sizes: Inlet	1/2-14 BSPP - F	
Outlet	3/8-19 BSPP - M	
Chemical Inlet	5/16 in. I.D. Hose	
Weight	4 lb.	
Dimensions	8.5 x 2.0 x 5.0 in.	

General Pump recommends using a safety relief device in conjunction with this unloader valve when installed on a positive displacement pump. General Pump is not liable and assumes no responsibility for this valve when used in a customer's high pressure system.

Model W2.1, W2.1L

2.9-4.5 GPM

Model W2.1 used on pump models	TS1371, TT1411, TT1611, TT9351, TT9441, T9971, All EZ Pumps
Model W2.1L used on pump models	T811, TS1011, TS1311, TS1331, TS1511, TS1711, TS2011, T9131, T9211

Model W2.2L

4.5-6.0 GPM

Model W2.2L used on pump models	T821, T921, T1021, T1321, T1621, T9121, T9161, TS821, TS921, TS1321, TS1521, TS1621, TS2021
---------------------------------	---

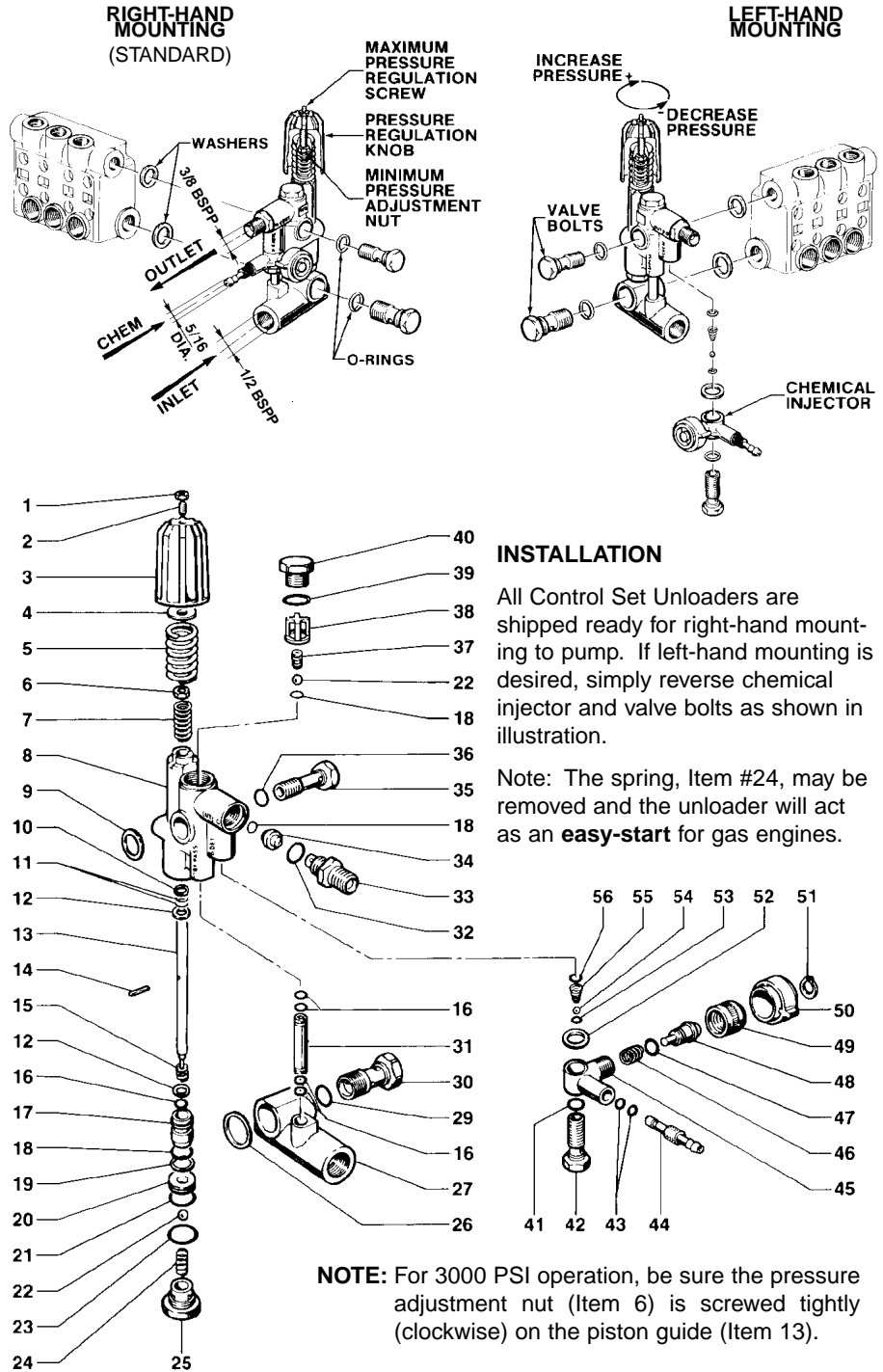
Trapped Pressure Control Set Unloader

PARTS LIST

W2 Pressure Control Set

No.	Part No.	Description	Repair Kit	Qty.
1.	92.2020.00	Nut, M6		1
2.	99.1848.00	Screw, M6 x 16		1
3.	36.3145.02	Knob		1
4.	36.3141.64	Guide, Spring		1
5.	94.7516.00	Spring	93	1
6.	92.2200.00	Nut, M8		1
7.	94.7400.00	Spring		1
8.	36.3134.01	Body		1
9.	93.1858.00	Washer, M17.5		1
10.	90.5034.00	Ring, Back-up	93	1
11.	90.3577.00	O-Ring, .302 x .070	93	2
12.	96.7009.00	Washer, M8		2
13.	36.3143.73	Guide, Piston		1
14.	97.6660.00	Pin		1
15.	94.7384.00	Spring	93	1
16.	90.3574.00	O-Ring, .239 x .070	93	5
17.	36.3142.66	Piston, Control		1
18.	90.3822.00	O-Ring, .391 x .103	93, 94	3
19.	90.5065.00	Ring, Back-up, M10.6 x 15	93	1
20.	36.3137.66	Seat, Valve	93	1
21.	90.3593.00	O-Ring, .614 x .070	93	1
22.	97.4838.00	Ball, 13/32"	93	2
23.	90.3843.00	O-Ring, .703 x .103	93	1
24.	94.7374.00	Spring	93	1
25.	36.3136.70	Screw, M22 x 1.5		1
26.	93.1972.00	Washer, M21.5		1
27.	36.3135.22	Body, Banjo		1
29.	90.3841.00	O-Ring, .674 x .103	93	1
30.	36.3139.70	Fitting, Banjo		1
31.	36.3138.93	Bypass Tube; W2.1		1
	36.3162.93	W2.1L, W2.2L		
32.	90.3832.00	O-Ring, .549 x .103	94	1
33.	10.0078.70	Nipple		1
34.	10.0076.66	Nozzle: Ø.087" W2.1, W2.1L		1
	10.0077.66	Ø.098" W2.2L		
35.	36.3140.70	Screw, 3/8"		1
36.	90.3827.00	O-Ring, .469 x .103	93	1
37.	94.7355.00	Spring	93	1
38.	36.3104.51	Guide, Valve	93	1
39.	90.3839.00	O-Ring, .625 x .103	93	1
40.	98.2152.00	Cap, M20		1
41.	90.3585.00	O-Ring, .426 x .070	94	1
42.	36.2563.70	Seat, Valve		1
43.	90.3570.00	O-Ring, .176 x .070	94	2
44.	36.2566.70	Fitting, Hose Barb		1
45.	36.3146.41	Body, Injector		1
46.	94.7383.00	Spring	94	1
47.	90.3580.00	O-Ring, .344 x .070	94	1
48.	36.3147.70	Shutter		1
49.	36.3148.70	Insert, Knob		1
50.	36.3149.51	Knob, Regulation		1
51.	90.0545.00	Circlip		1
52.	96.7280.00	Washer, M14		1
53.	90.3572.00	O-Ring, .208 x .070	94	1
54.	97.4782.00	Ball, 7/32"	94	1
55.	94.8217.00	Spring, Taper	94	1
56.	90.3582.00	O-Ring, .364 x .070	94	1

Repair Kit 93	Includes No.'s:	5, 10, 11, 15, 16, 18, 19, 20, 21, 22, 23, 24, 28, 29, 36, 37, 38, 39
Repair Kit 94	Includes No.'s:	18, 32, 41, 43, 46, 47, 53, 54, 55, 56



INSTALLATION

All Control Set Unloaders are shipped ready for right-hand mounting to pump. If left-hand mounting is desired, simply reverse chemical injector and valve bolts as shown in illustration.

Note: The spring, Item #24, may be removed and the unloader will act as an **easy-start** for gas engines.

NOTE: For 3000 PSI operation, be sure the pressure adjustment nut (Item 6) is screwed tightly (clockwise) on the piston guide (Item 13).

WARRANTY

General Pump accessories are warranted by the manufacturer to be free from defects in material and workmanship. Period of warranty shall be 90 days from date product is received by original buyer. Liability of manufacturer under the foregoing warranty is limited to **repair or replacement** at the option of manufacturer of that product which according to the manufacturer's investigation was deemed defective at time of shipment. Damage resulting from neglect, abuse, tampering or misapplication voids this warranty. This warranty is in lieu of all other warranties, expressed or implied, including any warranty of merchantability and/or any and all other obligations or liabilities on the part of the manufacturer.