

Parts List for 9910-KIT2204, 9910-KIT2200 and 9910-KIT2203

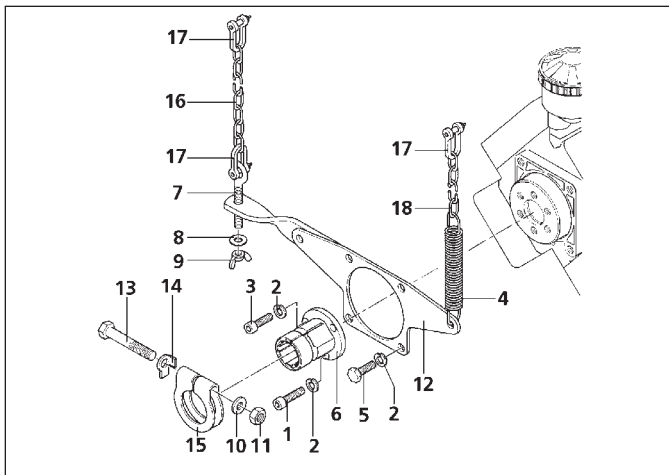


Figure 3. Female Splined Coupler Kit 9910-KIT2204 Installation

Parts List for 9910-KIT2204

REF. NO.	PART NUMBER	DESCRIPTION	QTY. REQ'D.
1	9910-160671	Bolt	3
2	9910-200231	Washer	10
3	9910-620470	Bolt	3
4	9910-650380	Spring	1
5	9910-620340	Bolt	4
6	9910-620270	Shaft	1
7	9910-320630	Eye bolt	1
8	9910-320620	Washer	1
9	9910-320610	Wing nut	1
10	9910-320131	Washer	1
11	9910-320130	Nut	1
12	9910-650350	Pump bracket	1
13	9910-320170	Bolt	1
14	9910-500171	Washer	1
15	9910-500160	Clamp	1
16	9910-320640	Chain	1
17	9910-650340	Chain hook	4
18	9910-320641	Chain	1

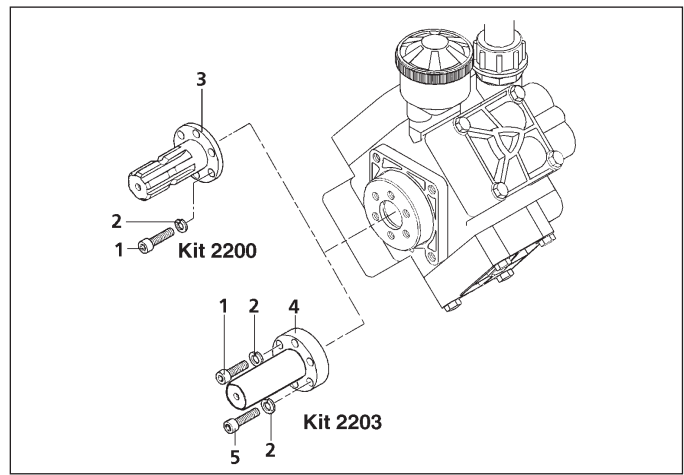


Figure 4. Male Splined Shaft Kit 9910-KIT2200 and Solid Shaft Kit 9910-KIT2203

Parts List for 9910-KIT2200 and 9910-KIT2203

REF. NO.	PART NUMBER	DESCRIPTION	QTY. REQ'D.
1	9910-160671	Bolt	3
2	9910-200231	Washer	6
3	9910-620240	Shaft, 6 spline	1
4	9910-621600	Shaft, 1 inch	1
5	9910-620470	Bolt	3

Shaft Adapter Kit Installation

Order appropriate shaft kit according to chart on page 2.

Female Splined Coupler Kit 9910-KIT2204 (See Fig. 3).

1. Install the splined shaft adapter (Ref. 6) onto the pump shaft and secure with three allen head bolts (Ref. 1) and three washers (Ref. 2).
2. Install the torque arm bracket over the shaft of the pump. Align the holes and secure with the four bolts (Ref. 5) and four washers (Ref. 2) placed in the top two holes in the bracket.
3. Position the clamp (Ref. 15) over the groove in the splined shaft adapter. Install the bolt (Ref. 13) into the clamp.
4. Slide the pump assembly onto the PTO shaft and secure by tightening the bolt (Ref. 13).
5. Attach chains to the bracket and secure to the tractor to prevent rotation of the pump during operation.

Solid Shaft Kit 9910-KIT2203

Male Splined Shaft Kit 9910-KIT2200 (See Fig. 4).

1. Install shaft adapter onto pump and secure with allen bolts and washers.