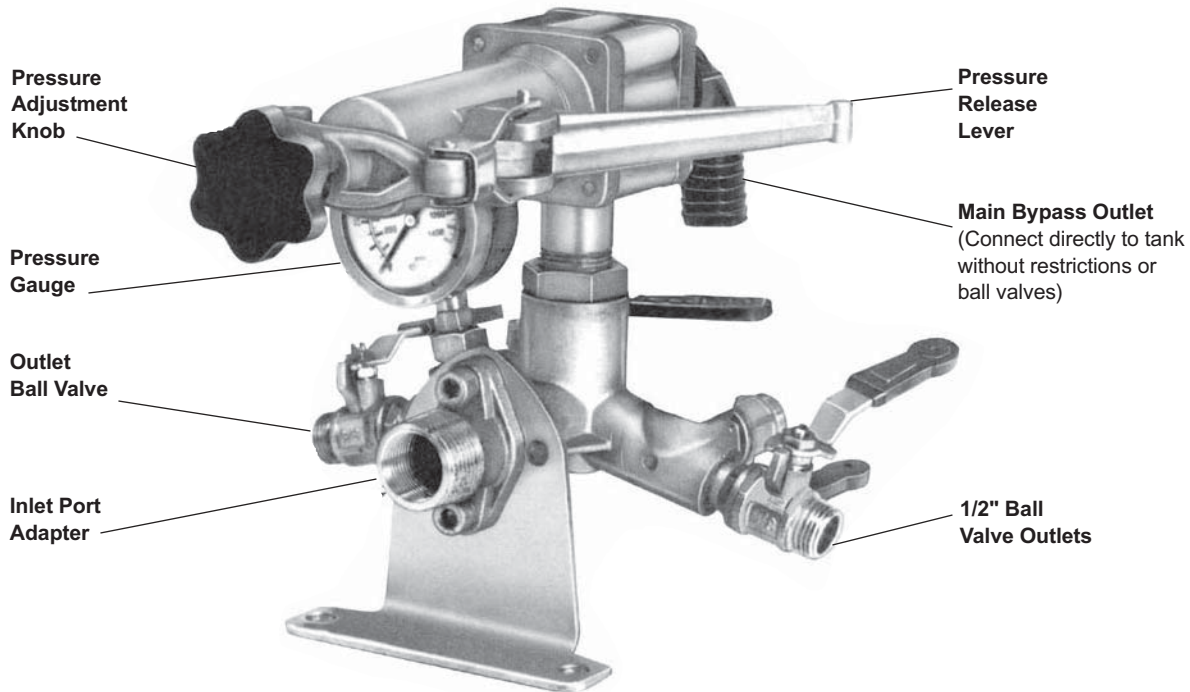


Control Unit 9910-GS50GI

The 9910-GS50GI control unit is designed for the control of pressures up to 725 psi and flows up to 48 gpm. It consists of an adjustable pressure relief valve, a manual pressure release lever, and three individual ball valve-controlled, 1/2" O.D., hose barb outlets.



Model 9910-GS50GI shown with Remote Mounting Kit No. 9910-KIT1742.

Installation

Remote Mounting* (Use Kit No. 9910-KIT1742)

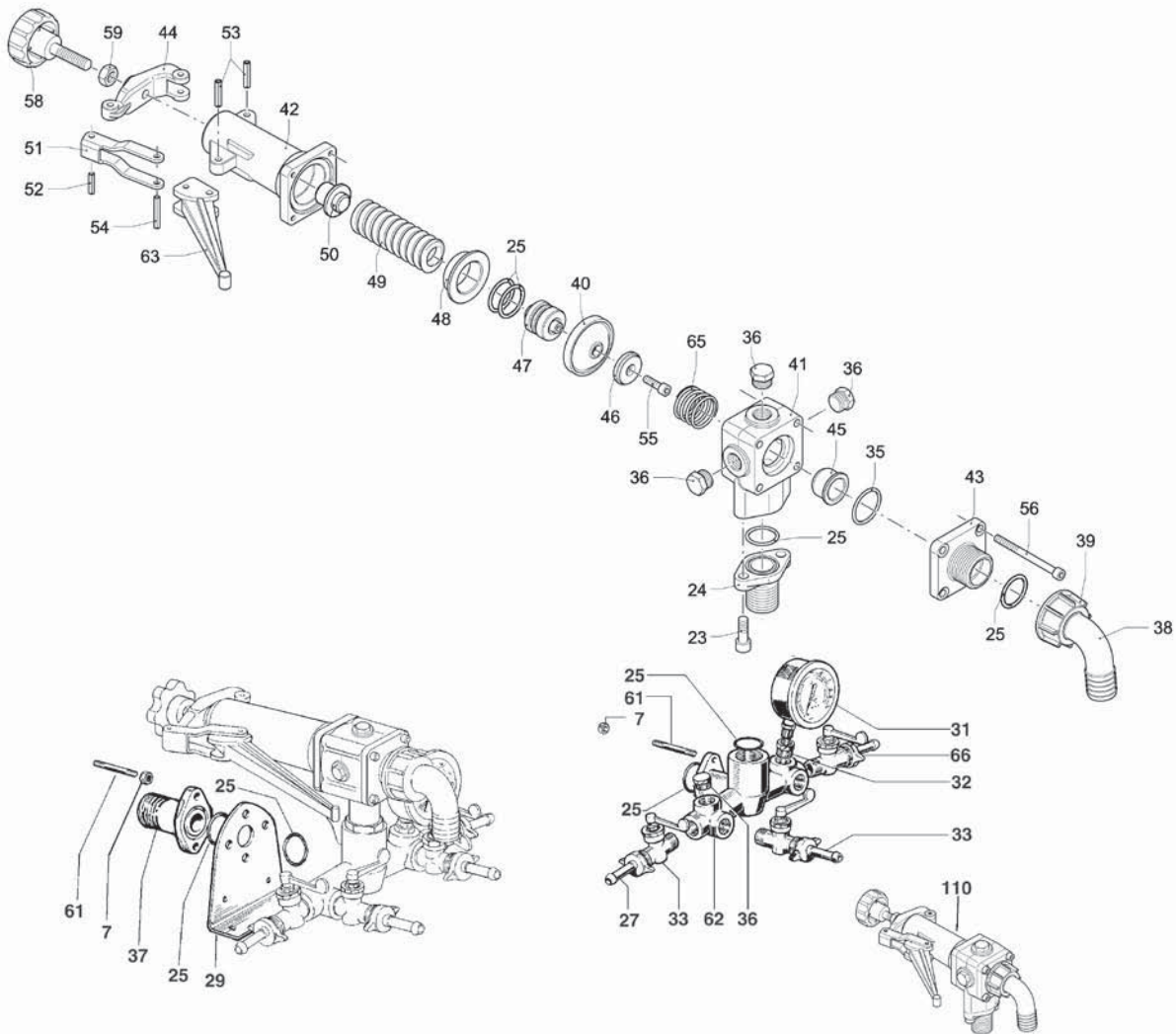
1. Remove the studs (Ref. 61) from the control unit body (Ref. 62).
2. Insert the lubricated o-rings (Ref. 25) into the groove of the relief valve body and the port adapter (Ref. 37).
3. Install the mounting bracket (Ref. 29) in the desired position and secure.
4. Mount the control unit and the port adapter on opposite sides of the mounting bracket and secure with studs (Ref. 61).
5. With a high pressure hose, connect the NPT fitting on the control unit to the NPT fitting on the discharge manifold of the pump.
6. Connect the bypass hose to the bypass port hose barb elbow (Ref. 38) and run it unrestricted back to the tank.
7. Connect the desired amount of lines to the outlet port hose barbs (Ref. 33). Unused ports can be shut off with the ball valve, or they can be plugged.

*Refer to the parts list on page 9 for part number references.

Operation

1. Refer to the pump operation instructions for the proper operation of the pump.
2. The control unit can be put into full bypass mode by lifting the pressure release lever into the up position.
3. With the pressure release lever in the down (pressure) position, pressure can be controlled with the adjustment knob at the end of the relief valve. Turning it clockwise will increase the operating pressure and turning it counterclockwise will decrease the pressure.
4. Flow can be controlled with the ball valves on each of the outlet ports.

Parts List for Control Unit 9910-GS50GI



REF. NO.	PART NUMBER	DESCRIPTION	QTY. REQ'D.
■ 7	9910-380240	Nut	2
23	9910-620610	Bolt	2
24	9910-850711	Flange 3/4"	1
• 25	9910-550350	O-Ring	6
26	9910-680330	Flange	1
27	9910-110131	Fitting 1/2"	3
■ 29	9910-320406	Bracket	1
31	2640-0002	Pressure gauge (1500 PSI)	1
32	9910-130170	Pipe reducer	1
33	9910-130491	Right ball valve	2
35	9910-280220	O-Ring	1
• 36	9910-130171	Plug	3
37	9910-550393	Port adapter	1
■ 38	9910-550370	Elbow, 90°	1
39	9910-550242	Barb nut	1
40	9910-390743	Diaphragm, Viton	1
• 41	9910-680412	Valve body	1
42	9910-680423	Spring housing	1
43	9910-680432	Discharge flange	1
44	9910-680442	Tension adj. support	1
45	9910-680460	Valve seat retainer	1
46	9910-680470	Valve seat	1
• 47	9910-680480	Valve piston	1
• 48	9910-680490	Piston valve seat	1

REF. NO.	PART NUMBER	DESCRIPTION	QTY. REQ'D.
49	9910-680500	Regulating spring	1
50	9910-680510	Spring guide	1
51	9910-680520	Lever guide	1
52	9910-680530	Lever guide pin	1
53	9910-680540	Support pin	2
54	9910-680550	Roll pin	1
55	9910-680700	Bolt	1
• 56	9910-680570	Bolt	4
58	9910-660130	Control knob	1
59	9910-180150	Nut	1
61	9910-720390	Stud	2
■ 62	9910-680400	Control unit body	1
63	9910-680452	Control lever	1
65	9910-320420	Spring	1
66	9910-130492	1/2" barb ball valve	1
• 110	9910-689060	Complete reg valve	1

• Repair Kit No. 9910-KIT1732 consists of: six Ref. 25, one Ref. 35, one Ref. 40, one Ref. 45, one Ref. 46, one Ref. 55, and one Ref. 65.

■ Remote mounting kit 9910-KIT1742 consists of: two Ref. 7, one Ref. 25, one Ref. 29, one Ref. 37, and two Ref. 61.