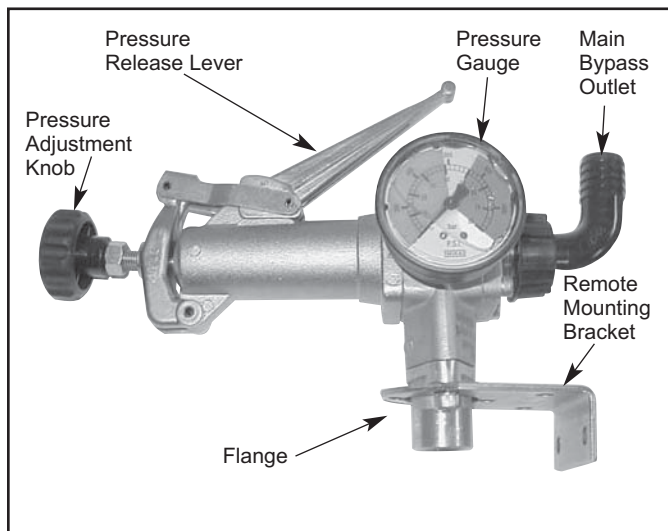


Control Unit 9910-GH50

The Model 9910-GH50 Control Unit is designed for the control of pressure up to 725 psi and flows up to 51 gpm. It consists of an adjustable pressure relief valve, pressure gauge, and a manual pressure release lever.



Installation

Direct Mounting:

1. Remove the two Allen bolts (Ref. 23)* from the flange (Ref. 24)* on the control unit. Retain the bolts for later. Do not misplace the o-ring.
2. Locate the outlet elbow (Ref. 52)** on the top of the discharge manifold of the pump.
3. Using thread sealant, attach the flange onto the outlet elbow. Tighten the flange to the desired orientation.
4. Verify o-ring is in place on the flange. Place the control unit onto the flange in the desired orientation, and replace and tighten the bolts previously removed in step 1.
5. Connect the bypass hose to the bypass port hose barb (Ref. 38)* and run it unrestricted back to the tank.
6. Connect the desired amount of lines to the outlet port hose barbs (Ref. 42)**. Unused ports can be shut off with the ball valve, or they can be plugged.

*Refer to diagram on page 7.

** Refer to diagram on page 10 or 12.

Remote Mounting:

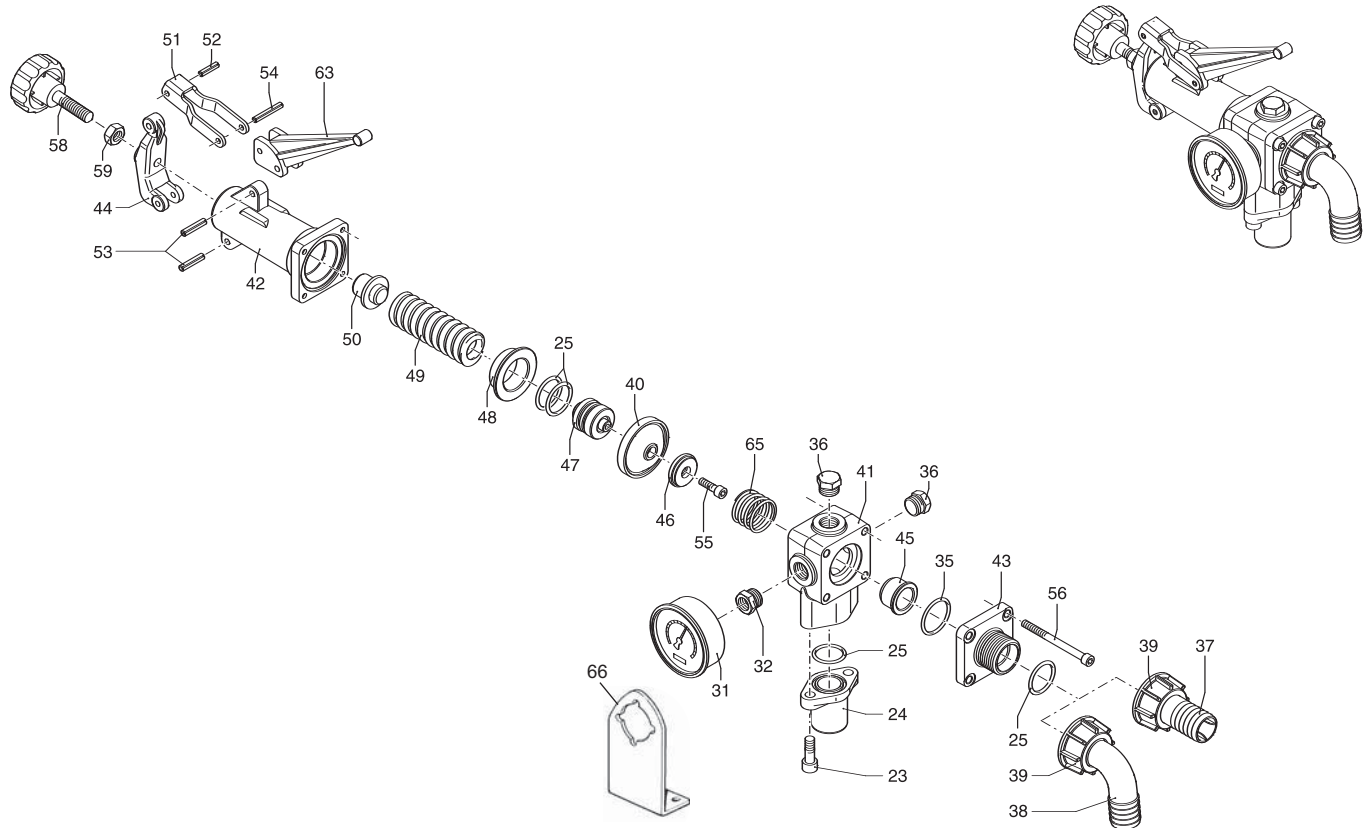
1. Remove the two Allen bolts (Ref. 23)* from the flange on the control unit.
2. Position the mounting bracket (Ref. 66)* over the flange in the desired position. Replace and secure bolts.
3. With high pressure hose, connect the NPT flange on the control unit to the NPT elbow at the top of the discharge manifold of the pump.
4. Connect the bypass hose to the bypass port hose barb (Ref. 38)* and run it unrestricted back to the tank.
5. Connect the desired amount of lines to the outlet port hose barbs (Ref. 42)**. Unused ports can be shut off with the ball valve, or they can be plugged.

NOTE: For all discharge connections, use hose rated equal to or greater than the maximum pressure rating

Operation

1. Refer to the pump operation instructions for proper operation of the pump.
2. The control unit can be put into full bypass mode by lifting the pressure release lever into the up position.
3. With the pressure release lever in the down (pressure) position, pressure can be controlled with the adjustment knob at the end of the relief valve. Turning it clockwise will increase the operating pressure and turning it counterclockwise will decrease the pressure.
4. Flow can be controlled with the ball valves on each of the outlet ports.

Parts List for Control Unit 9910-GH50



REF. NO.	PART NUMBER	DESCRIPTION	QTY. REQ'D
23	9910-620610	Bolt	2
24	9910-550394	Flange 3/4" G(F)	1
25	9910-550350	O-Ring	4
31	9910-1880290	Pressure gauge	1
32	9910-130170	Pipe reducer	1
35	9910-280220	O-Ring	1
36	9910-130171	Plug	2
37	9910-550210	Hose barb (Optional)	1
38	9910-550370	Elbow (Standard)	1
39	9910-550242	Ring Nut	1
40	9910-390740	Diaphragm (Buna)	1
41	9910-680412	Valve body	1
42	9910-680423	Upper valve side	1
43	9910-680432	Discharge flange	1
44	9910-680442	Tension adj. support	1
45	9910-680460	Valve seat	1
46	9910-680470	Valve	1
47	9910-680480	Valve piston	1
48	9910-680490	Piston valve	1
49	9910-680500	Regulating spring	1
50	9910-680510	Spring guide	1
51	9910-680520	Lever guide	1
52	9910-680530	Pin	1
53	9910-680540	Pin	2
54	9910-680550	Pin	1
55	9910-680700	Bolt	1
56	9910-680570	Bolt	4
58	9910-660130	Control knob	1
59	9910-180150	Nut	1
63	9910-680452	Control lever	1
65	9910-320420	Spring	1
66	9910-1150590	Remote mounting bracket*	1

9910-KIT1936 Repair Kit	
REF. NO.	QTY.
25	4
35	1
38	1
40	1
45	1
46	1
65	1

* Order separately