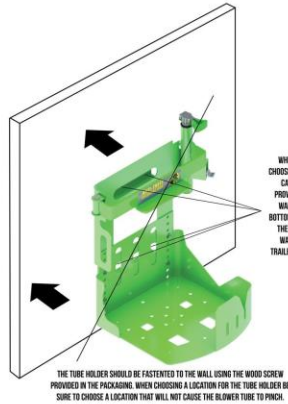


Enclosed Trailer Mounting



WHEN MOUNTING TO AN ENCLOSED TRAILER BE SURE TO CHOOSE A LOCATION WHERE THERE IS A RIDGE OR SUPPORT THAT CAN BE DRILLED INTO. USING THE FOUR SELF TAPPING SCREWS PROVIDED, SECURE THE RACK TO YOUR ENCLOSED TRAILER WALL. THERE ARE PRE-DRILLED HOLES ON THE TOP AND BOTTOM OF THE BACK PLATE. THIS IS THE LOCATION OF WHERE THE SELF TAPPING SCREWS WILL HOLD THE RACK TO THE WALL. IF YOUR WALLS ARE THIN, ADDING A 2X4 TO THE TRAILER WALL BEHIND THE BLOWER RACK MAY BE REQUIRED.

Rack Maintenance:

- Lubricating the padlock and any moving parts monthly will extend the usability of the rack.
- If your rack will be exposed to extreme weather elements (Hot weather; Snow/Ice) applying clear coat to the powder coated portions of the rack will extend the life of the color.
- Just like the lug nuts on your car, it is always a good idea to periodically check your nuts and bolts to make sure they are not loose or damaged. If loose or damaged, please replace immediately.

NEED ASSISTANCE? CONTACT US!
PHONE: 561.859.5525
EMAIL: INFO@GREENTOUCH.COM
WEB: TRAILERRACKS.COM
FACEBOOK: GREEN TOUCH INDUSTRIES
INSTAGRAM: GREEN_TOUCH_INDUSTRIES
YOUTUBE: TRAILERRACKSOUTCOM

XTREME PRO SERIES BACKPACK BLOWER RACK (ITEM#: BPS100)

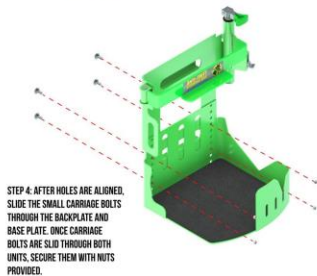
**GREENTOUCH
ARMY**

INSTALLATION INSTRUCTIONS

TRAILERRACKS.COM
BY GREEN TOUCH INDUSTRIES™



BPS100: XTREME PRO SERIES BACKPACK BLOWER RACK INSTALLATION INSTRUCTIONS



STEP 5: ALIGN THE HOLE ON THE TUBE HOLDER TO ONE OF THE THREE HOLES USING THE SMALL CARRIAGE BOLT AND NUT PROVIDED.
**Note: To assist in selecting the exact location of the tube holder, wrap blower tube around the rear of the backplate assembly and align. If pinching occurs in the blower tube you may have to select a location to mount the blower tube holder on your trailer.*

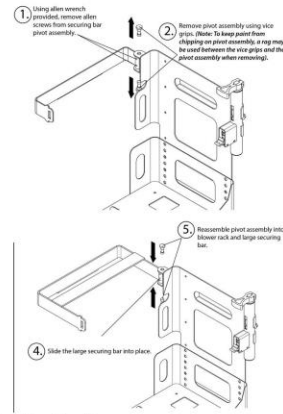


ATTENTION:

DEPENDING ON WHAT MODEL BACKPACK BLOWER YOU HAVE, YOU MAY NEED TO REMOVE THE SMALL SECURING BAR AND REPLACE IT WITH THE LARGE SECURING BAR PROVIDED IN THE BOX. MOST MODELS THAT REQUIRE THE LARGER SECURING BAR HAVE AN AIR FILTER LOCATED ON TOP OF THE BACKPACK BLOWER. SOME MODELS WILL ALSO REQUIRE THE BACKPACK BLOWER TO BE SECURED IN THE RACK WITH THE STRAPS FACING AWAY FROM THE BACKPLATE. LISTED BELOW ARE SOME MODELS THAT WOULD REQUIRE THE LARGER SECURING BAR.

USE LARGE SECURING BAR IF YOU HAVE ANY OF THESE MODELS:
STRAK BRIDGECRACK MODELS
HUSQVARNA GABRIEL'S STRAP (STRAPS MUST FACE OUT)
REDMAX (5500/7500) (STRAPS MUST FACE OUT)
ECHO PRO800

USE SMALL SECURING BAR IF YOU HAVE ANY OF THESE MODELS:
STRAK BRIDGECRACK MODELS
ECHO/SHINDIGRAM (ALL MODELS WITHOUT THE AIR FILTER ON TOP)
HUSQVARNA (ALL MODELS WITHOUT THE AIR FILTER ON TOP)



Open Trailer Mounting



THE SUGGESTED LOCATION TO MOUNT THE BPS100 IS ON THE CORNER OF YOUR TRAILER AT THE FRONT OF YOUR TRAILER. DRILL TWO 10MM HOLES INTO THE LOCATION YOU WISH TO MOUNT THE RACK. USING THE BOLTS AND NUTS PROVIDED SECURE THE BLOWER RACK TO THE CORNER OF YOUR TRAILER.