

LI 700®



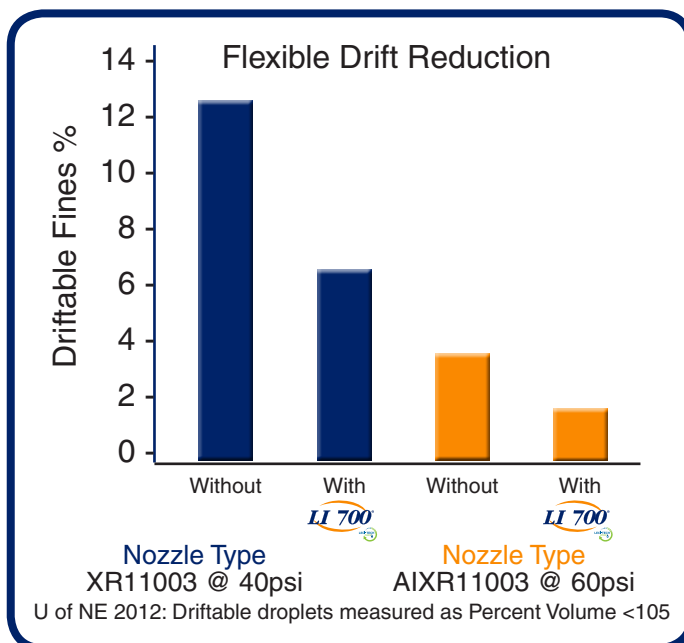
Maximizing Pesticide Performance

surFACTant 1

Pesticide drift occurs when spray droplets are too fine.

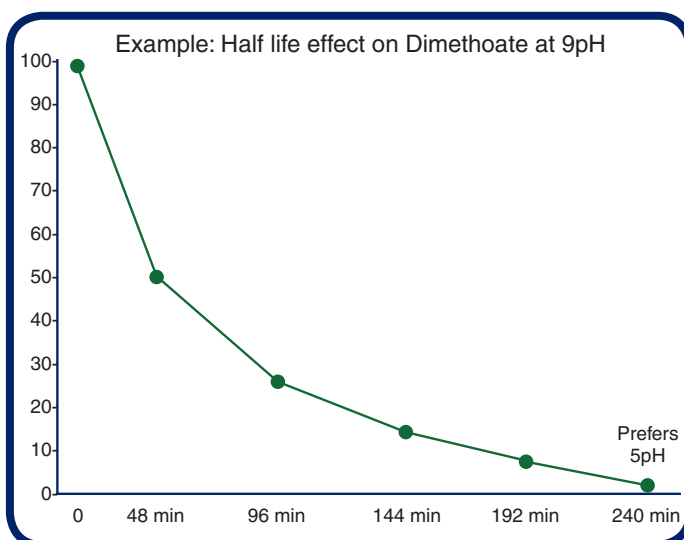
LI 700 surfactant reduces the chance of drift by reducing the production of small droplets.

LI 700 surfactant does not alter viscosity and allows nozzles to deliver optimal spray patterns.



surFACTant 2

High pH water in the spray solution can cause some pesticides to break down. LI 700 surfactant lowers water pH and ensures pesticide efficiency is maintained.



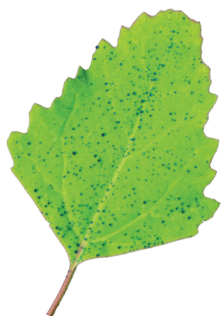
www.lovelandproducts.ca

© 2017 Loveland Products Inc. Always read and follow label directions.
Leci-Tech and LI 700 are registered trademarks of Loveland Products, Inc.

surFACTant 3

For foliar spray products to be effective, droplets must stay on the leaf. LI 700 surfactant's spreading and adhesion properties hit the target and stay there.

Water Alone



Water + Glyphosate



Water + Glyphosate + LECI-TECH



*Demonstrates the positive benefits of Leci-Tech Chemistry to aide in coverage with fine droplets, on the waxy leaf surface of common lambquarters. blue dye was used for a visual indicator. * XR Nozzle Fine Droplets*

surFACTant 4

It can be difficult for pesticides to penetrate waxy cuticle that covers plant leaves. LI 700 surfactant provides better penetration of waxy cuticle for quicker pesticide uptake.



Demonstrates the effect of Leci-Tech chemistry on penetration and translocation of glyphosate into and throughout the Common Lambsquarters plant.