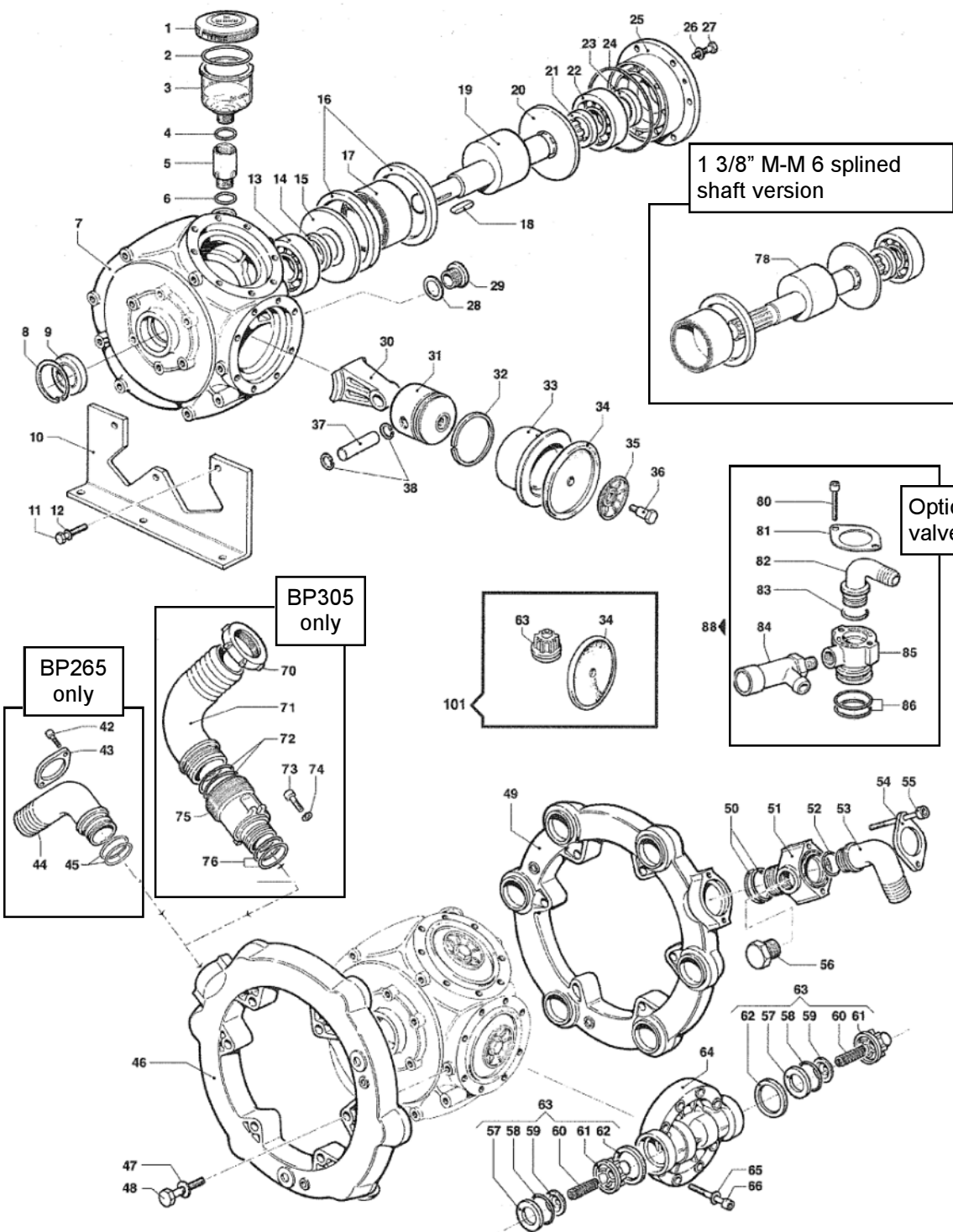




# BP265 / BP305

BP265/305



PRICES SUBJECT TO CHANGE WITHOUT NOTICE.

#	PART #	DESCRIPTION	NOTE	QTY
1	0402.0143.00	CAP		1
2	1210.0373.00	O-RING	3,53x73,03	1
3	0421.0012.00	OIL CUP		1
4	1210.0002.00	O-RING	2,62x20,7	1
5	2825.0038.00	M/F REDUCTION		1
6	1210.0002.00	O-RING	2,62x20,7	1
7	0403.0131.00	PUMP CRANKCASE		1
8	3020.0031.00	RETAINING CLIP	60	1
9	0019.0068.00	OIL SEAL	40x60X10	1
10	2400.0050.00	PUMP MOUNTING BRACKET		2
11	3607.0220.00	HEXAGONAL SCREW	M10X30	6
12	2819.0018.00	SPRING WASHER	10x5X17,5	6
13	0438.0049.00	BALL BEARING	40x90x23	1
14	0601.0264.00	SPACER	405x58x14,5	1
15	2813.0030.00	CONNECTING ROD WASHER	40x115x3,5	1
16	0010.0003.00	CONNECTING ROD RING	109,5x93x10	2
17	0437.0076.00	ROLLER BEARING	63x80x45	1
18	1602.0018.00	KEY	8x7x40	1
19	0001.0376.00	BP305 THROUGHSHAFT	1"3/8-30 CIL.	1
	0001.0377.00	BP265 THROUGHSHAFT	1"3/8-30 CIL.	1
20	2813.0030.00	CONNECTING ROD WASHER	40x115x3,5	1
21	0601.0264.00	SPACER	405x58x14,5	1
22	0438.0049.00	BALL BEARING	40x90x23	1
23	0019.0068.00	OIL SEAL	40x60x10	1
24	1210.0092.00	O-RING	1,78x126,72	1
25	0405.0064.00	SUPPORT COVER		1
26	2811.0098.00	WASHER	10,5x18x2	6
27	3607.0226.00	HEXAGONAL SCREW	M10x25	6
28	1209.0002.00	GASKET	22x30x1,5	1
29	3200.0001.00	PLUG	22MB	1
30	0205.0063.00	CONNECTING ROD ASS.Y		1
31	2409.0078.00	PISTON	80	6
32	0020.0003.00	COMPRESSION RING	80x3x3,2	6
33	0400.0075.00	BP305 PISTON SLEEVE	80	6
	0400.0076.00	BP265 PISTON SLEEVE	80	6
34	1800.0012.00	DIAPHRAGM	BUNA RUBBER	6
	1800.0098.00	DIAPHRAGM	DESMOPAN	6
35	0602.0044.00	DISC		6
36	3605.0093.00	DIAPHRAGM HOLDER SCREW	M12X1,5	6
37	3011.0011.00	CONNECTING ROD PIN	18x70	6

#	PART #	DESCRIPTION	NOTE	QTY
38	3020.0006.00	RETAINING CLIP	18	12
42	3609.0157.00	SCREW SOLO/ONLY BP265	M8x18	2
43	2404.0149.00	HOSE TAIL FIXING PLATE SOLO/ ONLY BP265		1
44	2801.0035.00	ELBOW COUPLING ONLY BP265	38x50	1
45	1210.0030.00	O-RING SOLO/ONLY BP265	3,53x39,69	2
46	0415.0043.00	SUCTION MANIFOLD		1
47	2811.0095.00	WASHER	13x24x2,5	12
48	3607.0219.00	HEXAGONAL SCREW	M12x60	12
49	0415.0044.00	DELIVERY MANIFOLD		1
50	1210.0030.00	O-RING	3,53x39,69	2
51	2803.0360.00	DELIVERY HOSE TAIL	G3/4	1
52	1210.0180.00	O-RING	3,0x29	1
53	2801.0058.00	ELBOW COUPLING	35	1
54	2404.0156.00	HOSE TAIL FIXING PLATE		1
55	3609.0169.00	SCREW	M8x60	2
56	3200.0064.00	PLUG	G 3/4M	1
57	3009.0125.00	SUCT./DELIV. VALVE SEAT		12
58	1210.0107.00	VITON O-RING	1,78x34,65	12
59	3604.0027.00	SUCTION/DELIVERY VALVE		12
60	1802.0196.00	SPRING (WIRE 1)	E14,5x27	12
61	1205.0032.00	SUCT./DELIV. VALVE CAGE		12
62	1201.0069.00	GASKET	49x56,5x8,3	12
63	1220.0042.00	SUCT./DELIV. VALVE ASS.Y KIT		12
64	3218.0120.00	PUMP MANIFOLD		6
65	2811.0103.00	WASHER	13x20x2,5	48
66	3609.0158.00	SCREW	M12x55	48
70	1200.0057.00	WING NUT SOLO/ONLY BP305	G2"1/2	1
71	2801.0070.00	SUCTION ELBOW TAIL SOLO/ ONLY BP305	60 - 2" 1/2	1
72	1210.0387.00	O-RING SOLO/ONLY BP305	3,53x55,56	2
73	3609.0157.00	SCREW SOLO/ONLY BP305	M8x18	2
74	2811.0099.00	WASHER SOLO/ONLY BP305	8,4x15x1,6	2
75	2803.0417.00	HOSE TAIL SOLO/ONLY BP305	G2"1/2	1
76	1210.0556.00	O-RING SOLO/ONLY BP305	4x49	1

#	PART #	DESCRIPTION	NOTE	QTY
78	0001.0396.00	THRU-SHAFT FOR BP305	1"3/8 - 1"3/8	1

#	PART #	DESCRIPTION	NOTE	QTY
101	5026.0127.00	ORDINARY MAINTENANCE KIT		1