



KAPPA-120 & KAPPA-120/CC

High Pressure, High Volume Diaphragm Pump

KAPPA-120 high pressure, high volume diaphragm pumps are excellent for various horticultural and agricultural spraying applications. Simplicity of design and common parts allow easy and affordable maintenance.

Liquid handling parts are anodized aluminum, brass and stainless steel. Pulsation dampener, control valve and pressure gauge are standard.

Splined Q2 bushing is available for pulley drive applications.

For industrial uses and spraying applications not listed, please consult UDOR U.S.A.

For all PTO drive applications, safety shield Part # 1219.02 is recommended.

For Thrushaft protection, part # 1219.15 is recommended.



SPECIFICATIONS

Maximum Flow	35 GPM
Maximum Pressure.....	700 PSI
Maximum Pump Speed.....	540 RPM
Maximum Temperature.....	140°F
Ports	
Inlet.....	1-1/2" Hose Barb
Discharge KAPPA-120/CC	(1) 3/4" FNPT (2) 1/2" Hose Barb
Discharge KAPPA-120/GR	(1) 3/4" MNPT
Bypass.....	1" Hose Barb
Dimensions	
KAPPA-120/CC.....	L-14" x W-19" x H-16.5"
KAPPA-120/GR	L-21.5" x W-19" x H-16.5"
Weight	
KAPPA-120/CC.....	105 lbs.
KAPPA-120/GR	125 lbs.
Diaphragm Material	
Standard.....	DESMOPAN
Optional.....	BUNA-N

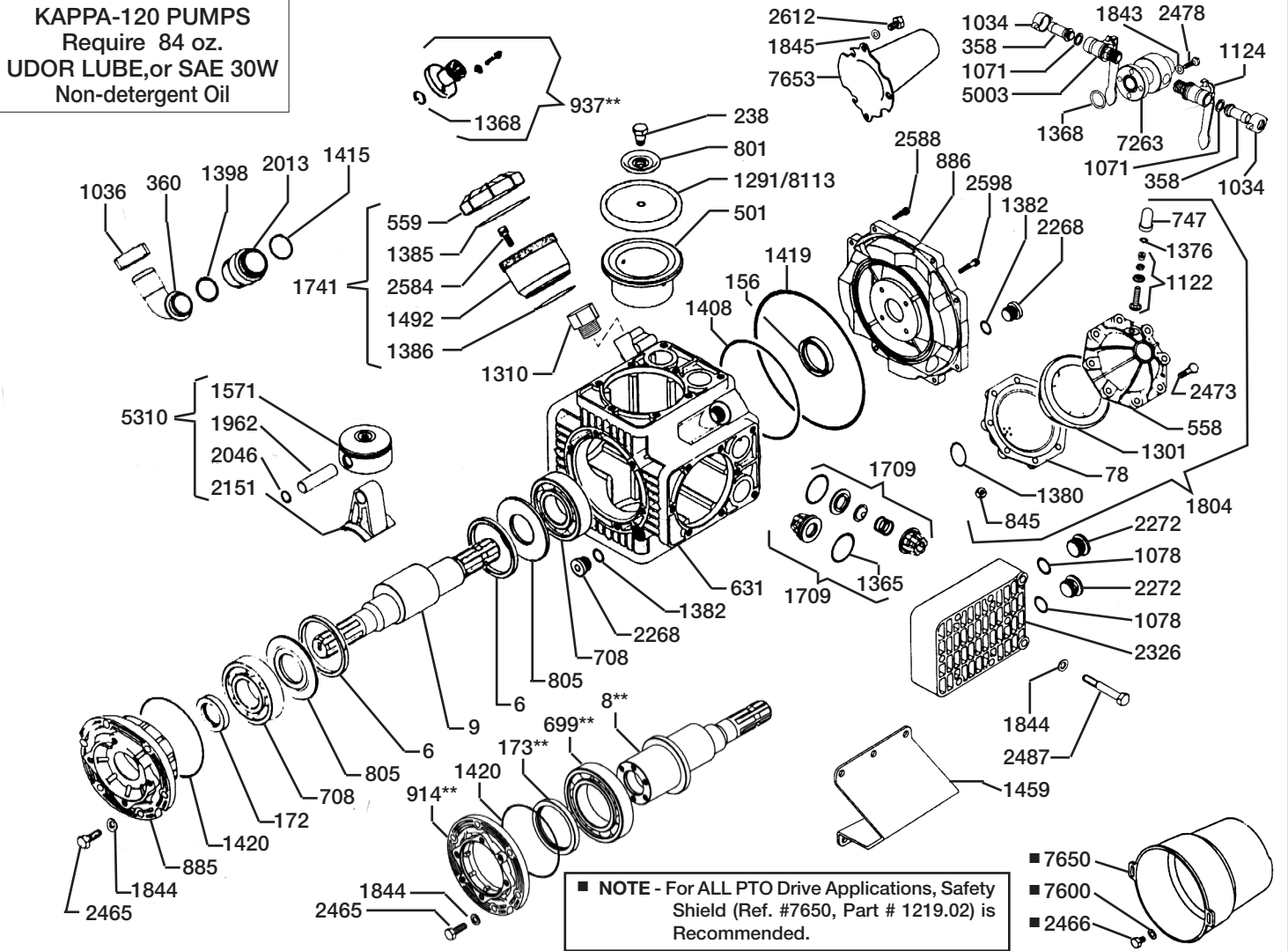
NOTE - Protect pumps from freezing. If freezing conditions exist, flush pump and system with a 50/50 mixture of anti-freeze and water.

UDOR U.S.A., INC.

500 Apollo Drive
Lino Lakes, MN 55014
TEL. (651) 785-0666
FAX. (800) 732-2670
www.udorusa.com

KAPPA-120 & KAPPA-120/CC - Exploded View Diagram & Parts List

KAPPA-120 PUMPS
Require 84 oz.
UDOR LUBE, or SAE 30W
Non-detergent Oil



REF#	PART#	DESCRIPTION	QTY	REF#	PART#	DESCRIPTION	QTY
6	0001.08	Retainer Ring	2	1386	1101.33	O-Ring	1
**8	0002.66	Crankshaft (KAPPA-120)	1	1398	1101.42	O-Ring	1
9	0002.64	Crankshaft (KAPPA-120/CC)	1	1408	1101.63	O-Ring	1
78	0003.10	Pressure Accumulator	1	1415	1101.77	O-Ring	1
156	0007.02	Seal	1	1419	1101.80	O-Ring	1
172	0007.34	Seal	1	1420	1101.71	O-Ring	1
**173	0007.35	Seal (KAPPA-120)	1	1459	1202.36	Mounting Rails	2
238	0102.03	Diaphragm Bolt	4	1492	1203.30	Oil Reservoir	1
358	0202.19	Discharge Barb	2	1569	1205.06	Piston	4
360	0202.84	Suction Elbow	1	1709	6006.08	Valve Assembly	8
501	0206.28	Piston Sleeve	4	1741	6033.02	Oil Reservoir Assembly	1
558	0208.21	Accumulator Head	1	1804	6031.02	Accumulator Assembly	1
559	0208.22	Oil Cap	1	1843	1403.07	Washer	4
631	0209.33	Pump Body	1	1844	1403.09	Washer	26
**699	0214.03	Bearing (KAPPA-120)	2	1845	1403.10	Washer	2
708	0214.16	Bearing	2	1962	1502.01	Connecting Rod Pin	4
747	0218.01	Air Valve Cap	1	2013	1504.04	Nipple	1
801	0301.07	Retainer Washer	4	2046	1506.02	Snap Ring	8
805	0301.34	Washer	2	2151	1519.24	Connecting Rod	4
845	0303.01	Nut	8	2268	1603.32	Body Plug	2
885	0501.81	Bearing Retainer (KAPPA-120/CC)	1	2272	1603.A3	Head Plug Brass	8
886	0501.80	Body Flange	1	2326	1604.51	Head	4
**914	0501.82	Bearing Retainer (KAPPA-120)	1	2465	1804.03	Bolt	6
**937	0508.03/K	3/4" MNPT Outlet	1	2466	1804.06	Bolt	2
1034	0604.09	Discharge Barb Nut	2	2473	1804.54	Bolt	8
1036	0604.48	Suction Nut, Brass	1	2478	1804.68	Bolt	4
1071	0605.05	Gasket	2	2487	1804.25	Bolt	32
1078	0605.42	Aluminum Gasket	8	2584	1805.06	Bolt	3
1122	0608.16	Air Valve Assembly	1	2588	1805.21	Bolt	8
1124	0608.45	Ball Valve, Left	1	2598	1805.31	Bolt	4
1291	0903.02	Piston Diaphragm (BUNA-N) optional	4	2612	1805.47	Bolt	2
*1301	0903.16	Accumulator Diaphragm	1	5003	0608.46	Ball Valve, Right	1
1310	1001.04	3/4" Adapter Fitting	1	5310	6015.36	Piston/Rod Assembly	4
*1365	1101.01	O-Ring	8	7263	0508.13	Discharge Manifold	1
1368	1101.04	O-Ring	1	7600	1403.36	Washer	2
1376	1101.16	O-Ring	1	7650	1219.02	PTO Safety Shield, optional	1
1380	1101.25	O-Ring	1	7653	1219.15	Thru-Shaft Protector	1
1382	1101.29	O-Ring	2	*8113	0903.34	Piston Diaphragm (DESMOPAN)	4
1385	1101.32	O-Ring	1				

* Parts Included in Diaphragm Repair Kit - #8700.22. (Also available in Buna-N - #8700.21.)

** Parts for KAPPA-120 ONLY