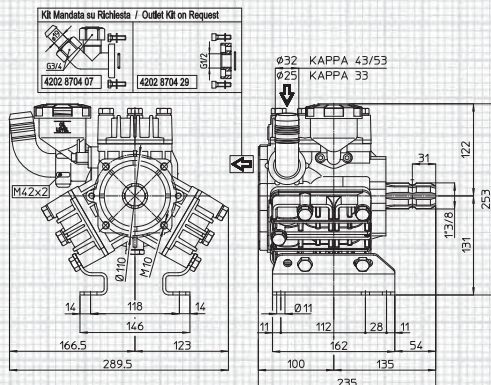


KAPPA 33 max. 33 l/min - 8.6 GPM • 40 bar - 580 PSI • 550 RPM

KAPPA 43 max. 46 l/min - 12 GPM • 40 bar - 580 PSI • 550 RPM

KAPPA 53 max. 55 l/min - 14.5 GPM • 40 bar - 580 PSI • 550 RPM



alberi P. di F. disponibili available P.T.O. shaft



1C

2



GR

1-4-14-15



TS 1C

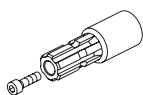
1

2

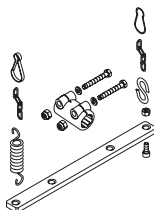
Per le dimensioni degli Alberi P. di F. vedi pag. 35

For P.T.O. Shaft dimensions see page 35

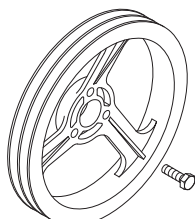
applicazioni shaft adaptors



1



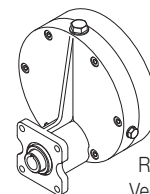
2



4



14



RIDOTTORI 15
Vedi pag. 42/43

GEAR REDUCTIONS 15
See page 42/43

MOD.	RPM	0 bar / 0 PSI				10 bar / 145 PSI				20 bar / 290 PSI				30 bar / 435 PSI				40 bar / 580 PSI				Peso Weight
		Portata Flow rate		Potenza Power		Portata Flow rate		Potenza Power		Portata Flow rate		Potenza Power		Portata Flow rate		Potenza Power		Portata Flow rate		Potenza Power		
		l/min	GPM	HP	kW	l/min	GPM	HP	kW	l/min	GPM	HP	kW	l/min	GPM	HP	kW	l/min	GPM	HP	kW	Kg
KAPPA 33	400	24.1	6.4	0.2	0.2	21.9	5.8	0.6	0.5	21.3	5.6	1.1	0.8	20.9	5.5	1.6	1.2	20.5	5.4	2.1	1.5	11
	450	27.0	7.1	0.3	0.2	24.7	6.5	0.7	0.5	24.1	6.4	1.3	0.9	23.7	6.3	1.8	1.4	23.3	6.2	2.4	1.8	
	500	29.8	7.9	0.3	0.2	27.5	7.3	0.8	0.6	26.9	7.1	1.4	1.0	26.5	7.0	2.1	1.5	26.1	6.9	2.7	2.0	
	550	32.6	8.6	0.3	0.2	30.2	8.0	0.9	0.6	29.6	7.8	1.6	1.1	29.2	7.7	2.3	1.7	28.8	7.6	3.0	2.2	
KAPPA 43	400	33.7	8.9	0.3	0.2	31.8	8.4	0.9	0.7	31.4	8.3	1.7	1.2	31.1	8.2	2.4	1.8	30.8	8.1	3.2	2.3	11
	450	38.0	10.0	0.4	0.3	36.0	9.5	1.0	0.8	35.6	9.4	1.9	1.4	35.3	9.3	2.7	2.0	35.0	9.2	3.6	2.6	
	500	42.2	11.1	0.4	0.3	40.1	10.6	1.1	0.8	39.7	10.5	2.1	1.5	39.4	10.4	3.1	2.3	39.1	10.3	4.0	2.9	
	550	45.7	12.1	0.5	0.3	43.5	11.5	1.2	0.9	43.1	11.4	2.3	1.7	42.7	11.3	3.3	2.4	42.3	11.2	4.3	3.2	
KAPPA 53	400	40.2	10.6	0.4	0.3	38.2	10.1	1.1	0.8	37.8	10.0	2.0	1.5	37.4	9.9	2.9	2.1	37.0	9.8	3.8	2.8	11
	450	45.0	11.9	0.4	0.3	42.9	11.3	1.2	0.9	42.4	11.2	2.2	1.6	42.0	11.1	3.3	2.4	41.6	11.0	4.3	3.1	
	500	49.7	13.1	0.5	0.4	47.5	12.5	1.4	1.0	47.0	12.4	2.5	1.8	46.6	12.3	3.6	2.7	46.2	12.2	4.7	3.5	
	550	54.8	14.5	0.5	0.4	52.4	13.8	1.5	1.1	51.9	13.7	2.7	2.0	51.4	13.6	4.0	2.9	50.8	13.4	5.2	3.8	