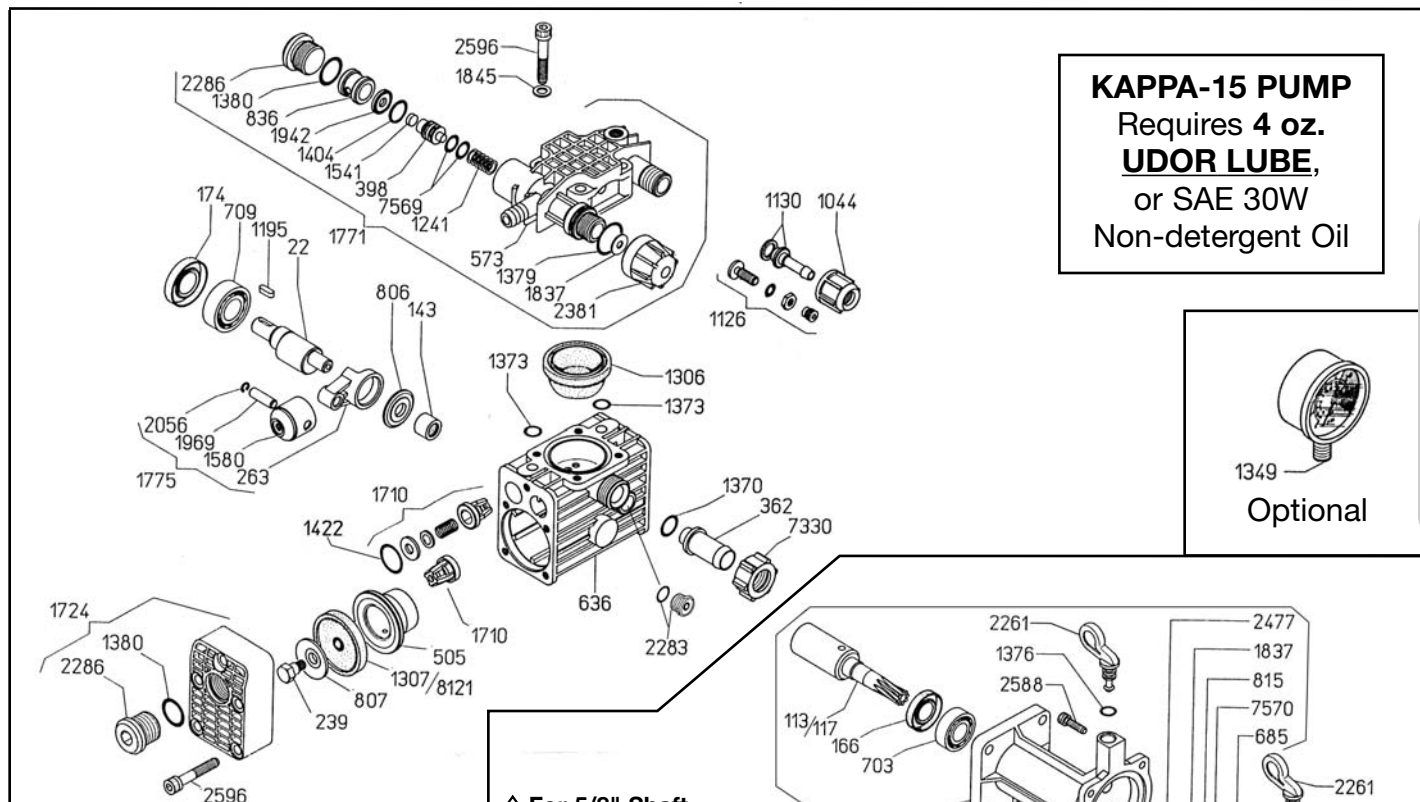




# KAPPA-15/GR

## Exploded View Diagram and Parts List



◇ For 5/8" Shaft Engines Only

**GEARBOX**  
Requires 2 oz.  
of 90W  
Gear Lube

5047.D7 3/4" Gear Box  
5050.E2 5/8" Gear Box

REF#	PART#	DESCRIPTION	QTY
22	0002.75	Crankshaft	1
113	0004.19	Gearshaft - 3/4"	1
117	0004.24	Gearshaft - 5/8"	1
143	0006.33	Bearing	1
166	0007.21	Seal	1
174	0007.37	Seal	1
239	0102.02	Diaphragm Bolt	2
263	0103.07	Connecting Rod	2
362	0202.27	Suction Hose Barb	1
**398		R.V. Piston	1
505	0206.33	Piston Sleeve	2
573	0208.47	Discharge Manifold	1
636	0209.48	Pump Body	1
685	0213.32	Pump Gear	1
703	0214.08	Bearing	1
709	0214.17	Bearing	1
754	0228.34	Mounting Flange	1
806	0301.35	Spacer	1
807	0301.37	Diaphragm Washer	2
815	0302.71	Washer	1
**836		R.V. Spacer	1
870	0304.02	Lock Nut	4
1044	0604.30	Barb Nut	1
1074	0605.41	Gasket	1
1126	0608.16	Air Valve Assembly	1
1130	0202.09	Hose Barb - 3/8"	1
1195	0801.08	Shaft Key	1
1241	0901.52	R.V. Spring	1
*1306	0903.44	Accumulator Diaphragm	1
1307	0903.45	Piston Diaphragm (BUNA-N)	2
1349	GG-0350	Pressure Gauge (Optional)	1

REF#	PART#	DESCRIPTION	QTY
1370	1101.06	O-Ring	1
*1373	1101.11	O-Ring	2
1376	1101.16	O-Ring	1
1379	1101.23	O-Ring	1
1380	1101.25	O-Ring	3
**1404	1101.61	O-Ring	1
*1422	1101.78	O-Ring	4
**1541		Poppet	1
1580	1205.27	Piston	2
1710	6006.11	Valve Assembly	4
1724	6017.14	Pump Head	2
1771	6005.26	Discharge Manifold Assy	1
1775	6015.31	Piston Rod Assembly	2
1837	1403.29	Washer	2
1845	1403.10	Washer	8
**1942		Seat	1
1969	1502.11	Wrist Pin	2
2056	1506.24	Snap Ring	2
2261	1603.23	Oil Plug	2

REF#	PART#	DESCRIPTION	QTY
2283	1603.69	Oil Sight Glass	1
2286	1603.87	Plug	3
2381	1801.21	R.V. Cap	1
2477	1804.67	Bolt	1
2480	1603.14	Plug	1
2587	1805.20	Bolt	4
2588	1805.21	Bolt	4
2596	1805.23	1Bolt	14
2622	1807.07	Bolt, 5/16" x 1"	4
◇2623	1804.63	Bolt, 8mm x 1.25	4
7248	0501.88	Gear Case	1
7330	0604.29	Barb Nut	1
**7569	1101.54	O-Ring	2
7570	1101.91	O-Ring	1
*8121	0903.49	Piston Diaphragm (DESMOPAN)	2
9100	0602.49	Gasket	1

\* Parts included in Diaphragm Repair Kit, Part # 8700.27. Also available in BUNA-N, Part # 8700.28

\*\* Parts included in Control Unit Repair Kit, Part # 8701.05



# KAPPA-15/GR

## Diaphragm Pump with Gear Reduction

The KAPPA-15/GR is an internally manifolded, two-diaphragm pump with anodized aluminum & glass filled nylon construction.

The KAPPA-15/GR comes with a pulsation dampener, adjustable pressure regulator, and a 3/4" gear reduction for a 3 & 5 HP gasoline engine.



Also available is a model equipped with a 5/8" gear box shaft designed to fit 2.2-3.5 HP gas engines.

For this model, order part number - **KAPPA-15/GR-5/8**.

### SPECIFICATIONS

Maximum Flow . . . . .	3.5 GPM
Maximum Pressure . . . . .	275 PSI
Hose Barb Ports	
In . . . . .	3/4"
Out . . . . .	3/8"
Bypass . . . . .	5/8"
Dimensions . . . . .	L-10.5" x W-7" x H-7"
Weight . . . . .	10 lbs.
Diaphragm Material	
Standard . . . . .	DESMOPAN
Optional . . . . .	BUNA-N

NOTE - Protect pumps from freezing. If freezing conditions exist, flush pump and system with a 50/50 mixture of antifreeze and water.

KAPPA-15/GR