



KAPPA-150/CC

High Pressure, High Volume Diaphragm Pump

KAPPA-150/CC high pressure, high volume diaphragm pumps are excellent for various horticultural and agricultural spraying applications. Simplicity of design and common parts allow easy and affordable maintenance

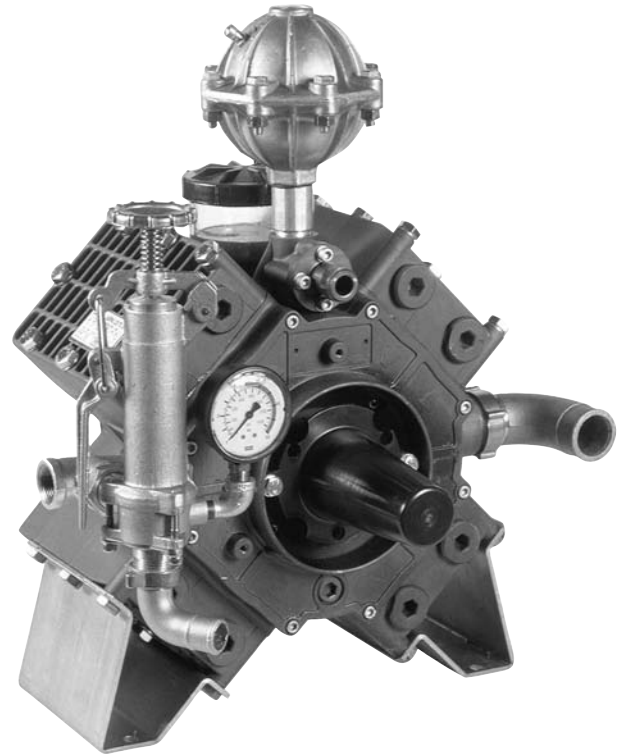
Liquid handling parts are anodized aluminum, brass and stainless steel. Pulsation dampener, control valve and pressure gauge are standard.

Splined Q2 bushing is available for pulley drive applications.

For industrial uses and spraying applications not listed, please consult UDOR U.S.A.

For all PTO drive applications, safety shield Part # 1219.02 is recommended.

For Thrushaft protection, part # 1219.15 is recommended.



SPECIFICATIONS

Maximum Flow	42 GPM
Maximum Pressure.....	700 PSI
Maximum Pump Speed	540 RPM
Maximum Temperature	140°F
Ports	
Inlet	1-1/2" Hose Barb
Discharge	3/4" FNPT & 3/4" MNPT
Bypass	1" Hose Barb
Dimensions	L-14" x W-19" x H-16.5"
Weight	105 lbs.
Diaphragm Material	
Standard.....	DESMOPAN
Optional	BUNA-N

NOTE - Protect pumps from freezing. If freezing conditions exist, flush pump and system with a 50/50 mixture of antifreeze and water.

KAPPA-150/CC

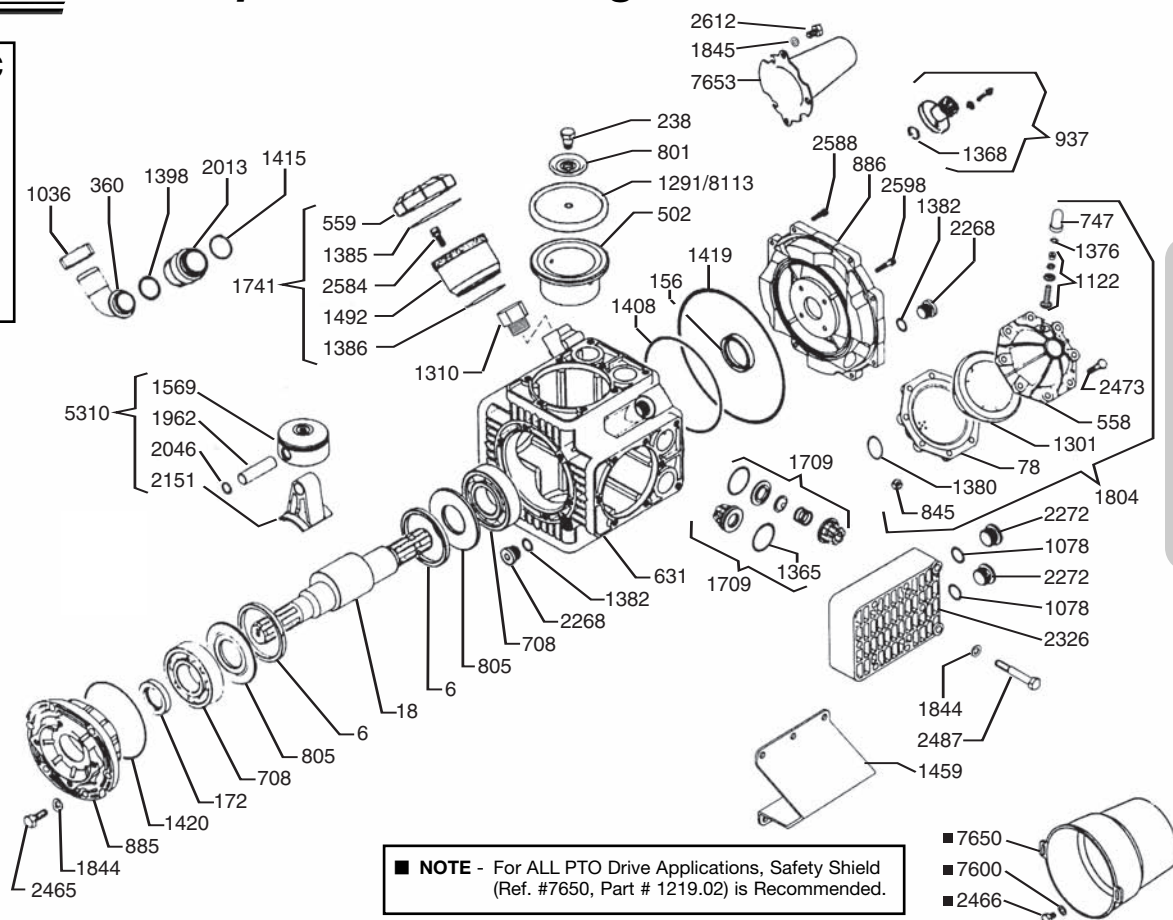


KAPPA-150/CC

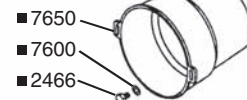
Exploded View Diagram and Parts List

KAPPA-150/CC PUMPS

Require **84 oz.**
UDOR LUBE,
or SAE 30W
Non-detergent
Oil



■ **NOTE** - For ALL PTO Drive Applications, Safety Shield (Ref. #7650, Part # 1219.02) is Recommended.



REF#	PART#	DESCRIPTION	QTY	REF#	PART#	DESCRIPTION	QTY
6	0001.08	Retainer Ring	2	1408	1101.63	O-Ring	1
18	0002.65	Crankshaft	1	1415	1101.77	O-Ring	1
78	0003.10	Lower Accumulator	1	1419	1101.80	O-Ring	1
156	0007.02	Seal	1	1420	1101.71	O-Ring	1
172	0007.34	Seal	1	1459	1202.36	Mounting Rails	2
238	0102.03	Diaphragm Bolt	4	1492	1203.30	Oil Reservoir	1
360	0202.84	Suction Elbow	1	1569	1205.06	Piston	4
502	0206.29	Piston Sleeve	4	1709	6006.08	Valve Assembly	8
558	0208.21	Accumulator Head	1	1741	6033.02	Oil Reservoir Assembly	1
559	0208.22	Oil Cap	1	1804	6031.02	Accumulator Assembly	1
631	0209.33	Pump Body	1	1844	1403.09	Washer	26
708	0214.16	Bearing	2	1845	1403.10	Washer	2
747	0218.01	Air Valve Cap	1	1962	1502.01	Connecting Rod Pin	4
801	0301.07	Retainer Washer	4	2013	1504.04	Nipple	1
805	0301.34	Washer	2	2046	1506.02	Snap Ring	8
845	0303.01	Nut	8	2151	1519.17	Connecting Rod	4
885	0501.81	Bearing Retainer	1	2268	1603.32	Body Plug	2
886	0501.80	Body Flange	1	2272	1603.A3	Head Plug brass	8
937	0508.03/K	3/4" MNPT Outlet	1	2326	1604.51	Head	4
1036	0604.48	Suction Nut, Brass	1	2465	1804.03	Bolt	6
1078	0605.42	Aluminum Gasket	8	■ 2466	1804.06	Bolt	2
1122	0608.16	Air Valve Assembly	1	2473	1804.54	Bolt	8
1291	0903.02	Piston Diaphragm (BUNA-N) optional	4	2487	1804.25	Bolt	32
*1301	0903.16	Accumulator Diaphragm	1	2584	1805.06	Bolt	3
1310	1001.04	3/4" Adapter Fitting	1	2588	1805.21	Bolt	8
*1365	1101.01	O-Ring	8	2598	1805.31	Bolt	4
1368	1101.04	O-Ring	1	2612	1805.47	Bolt	2
1376	1101.16	O-Ring	1	5310	6015.36	Piston/Rod Assembly	4
1380	1101.25	O-Ring	1	■ 7600	1403.36	Washer	2
1382	1101.29	O-Ring	2	■ 7650	1219.02	PTO Safety Shield, optional	1
1385	1101.32	O-Ring	1	7653	1219.15	Thru-Shaft Protector	1
1386	1101.33	O-Ring	1	*8113	0903.34	Piston Diaphragm (DESMOPAN) Std	4
1398	1101.42	O-Ring	1				

* Parts Included in Diaphragm Repair Kit - #8700.22. (Also available in Buna-N - #8700.21.)