

**ZETA-P 40**

max. 44 l/min - 11.6 GPM • 20 bar - 290 PSI • 550 RPM

**ZETA-P 85**

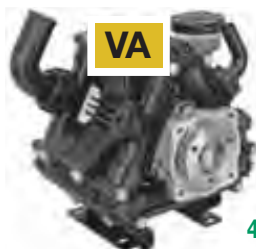
max. 85 l/min - 22.5 GPM • 20 bar - 290 PSI • 550 RPM

**ZETA-P 100**

max. 98 l/min - 25.9 GPM • 20 bar - 290 PSI • 550 RPM

**TESTATE a base di resina poliesteri**  
*Polyester resin-based HEADS*DISEGNO ZETA-P 40 E ZETA-P 85: VEDI PAG.10  
ZETA-P 40 AND ZETA-P 85 DRAWING: SEE PAGE 10  
DISEGNO ZETA-P 100: VEDI PAG.11  
ZETA-P 100 DRAWING: SEE PAGE 11**ZETA-P 40**  
**ZETA-P 85****ZETA-P 100****alberi P. di F. disponibili available P.T.O. shaft****1C**

2-13

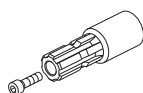
**VA**

4-15

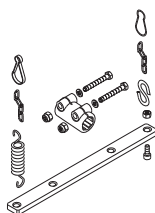
**TS 1C**

1

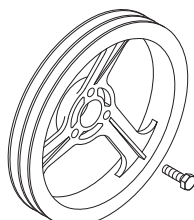
13

Per le dimensioni  
degli Alberi P. di F.  
vedi pag. 35*For P.T.O.  
Shaft dimensions  
see page 35***applicazioni shaft adaptors**

1



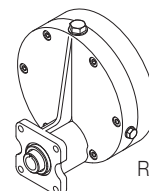
2



4



13

**RIDUTTORI 15**  
Vedi pag. 42**GEAR REDUCTIONS 15**  
See page 42

MOD.	RPM	0 bar / 0 PSI				5 bar / 72 PSI				10 bar / 145 PSI				15 bar / 217 PSI				20 bar / 290 PSI				Peso Weight
		Portata Flow rate		Potenza Power		Portata Flow rate		Potenza Power		Portata Flow rate		Potenza Power		Portata Flow rate		Potenza Power		Portata Flow rate		Potenza Power		
		l/min	GPM	HP	kW	l/min	GPM	HP	kW	l/min	GPM	HP	kW	l/min	GPM	HP	kW	l/min	GPM	HP	kW	
<b>ZETA-P 40</b>	400	33.0	8.7	0.3	0.2	30.0	7.9	0.6	0.4	29.3	7.7	0.8	0.6	28.8	7.6	1.2	0.8	28.5	7.5	1.5	1.1	12
	450	36.5	9.6	0.4	0.3	33.5	8.9	0.7	0.5	32.8	8.7	0.9	0.7	32.3	8.5	1.3	0.9	32.0	8.5	1.7	1.2	
	500	40.2	10.6	0.4	0.3	37.2	9.8	0.7	0.5	36.5	9.6	1.0	0.8	36.0	9.5	1.4	1.1	35.7	9.4	1.9	1.4	
	550	44.0	11.6	0.4	0.3	41.0	10.8	0.8	0.6	40.3	10.6	1.2	0.8	39.8	10.5	1.6	1.2	39.5	10.4	2.1	1.5	
<b>ZETA-P 85</b>	400	62.2	16.4	0.6	0.5	58.6	15.5	1.2	0.9	58.2	15.4	1.7	1.2	57.5	15.2	2.3	1.7	57.3	15.1	3.0	2.2	12
	450	69.7	18.4	0.7	0.5	65.9	17.4	1.3	1.0	65.5	17.3	1.9	1.4	64.9	17.1	2.6	1.9	64.6	17.1	3.4	2.5	
	500	77.2	20.4	0.8	0.6	73.2	19.3	1.5	1.1	72.7	19.2	2.1	1.5	72.2	19.1	2.9	2.1	71.8	19.0	3.8	2.8	
	550	84.6	22.4	0.8	0.6	80.4	21.2	1.6	1.2	79.9	21.1	2.3	1.7	79.4	21.0	3.2	2.3	79.0	20.9	4.2	3.1	
<b>ZETA-P 100</b>	400	72.8	19.2	0.7	0.5	69.2	18.3	1.4	1.0	68.8	18.2	2.0	1.4	68.4	18.1	2.7	2.0	68.2	18.0	3.6	2.6	13
	450	81.6	21.6	0.8	0.6	77.6	20.5	1.6	1.1	77.2	20.4	2.2	1.6	75.5	19.9	3.0	2.2	76.4	20.2	4.0	3.0	
	500	90.4	23.9	0.9	0.7	86.0	22.7	1.7	1.3	85.6	22.6	2.4	1.8	82.5	21.8	3.3	2.4	84.6	22.4	4.5	3.3	
	550	98.0	25.9	1.0	0.7	92.7	24.5	1.9	1.4	92.2	24.4	2.6	1.9	91.7	24.2	3.7	2.7	91.3	24.1	4.8	3.5	