



ZETA-260/CC

Six Diaphragm, Low Pressure Pump

The ZETA-260/CC is a six-diaphragm low pressure pump with plasticized aluminum heads and glass-filled nylon manifolds. These pumps work well for various horticultural and agricultural spraying applications. Simplicity of design and common parts allow easy and affordable maintenance. Liquid handling parts are plasticized aluminum, glass-filled nylon, and stainless steel.

The ZETA-260/CC is driven by a 1-3/8", six-spline, male PTO thru shaft, and has two optional safety shields.

A control unit is not included with the ZETA-260/CC. Please consult UDOR U.S.A. Diaphragm Pump catalog or website for an appropriate unit.

For industrial uses and spraying applications not listed please contact UDOR U.S.A.



SPECIFICATIONS

Maximum Flow	68 GPM
Maximum Pressure	300 PSI
Maximum Pump Speed	540 RPM
Maximum Temperature	140° F
Ports	
Inlet	1-1/2" (2) Hose Barbs
Discharge	1-1/2" Hose Barb
Dimensions	L-11" x W-15.5" x H-18"
Weight	75 lbs.
Diaphragm Material	
Standard	DESMOPAN
Optional	BUNA-N

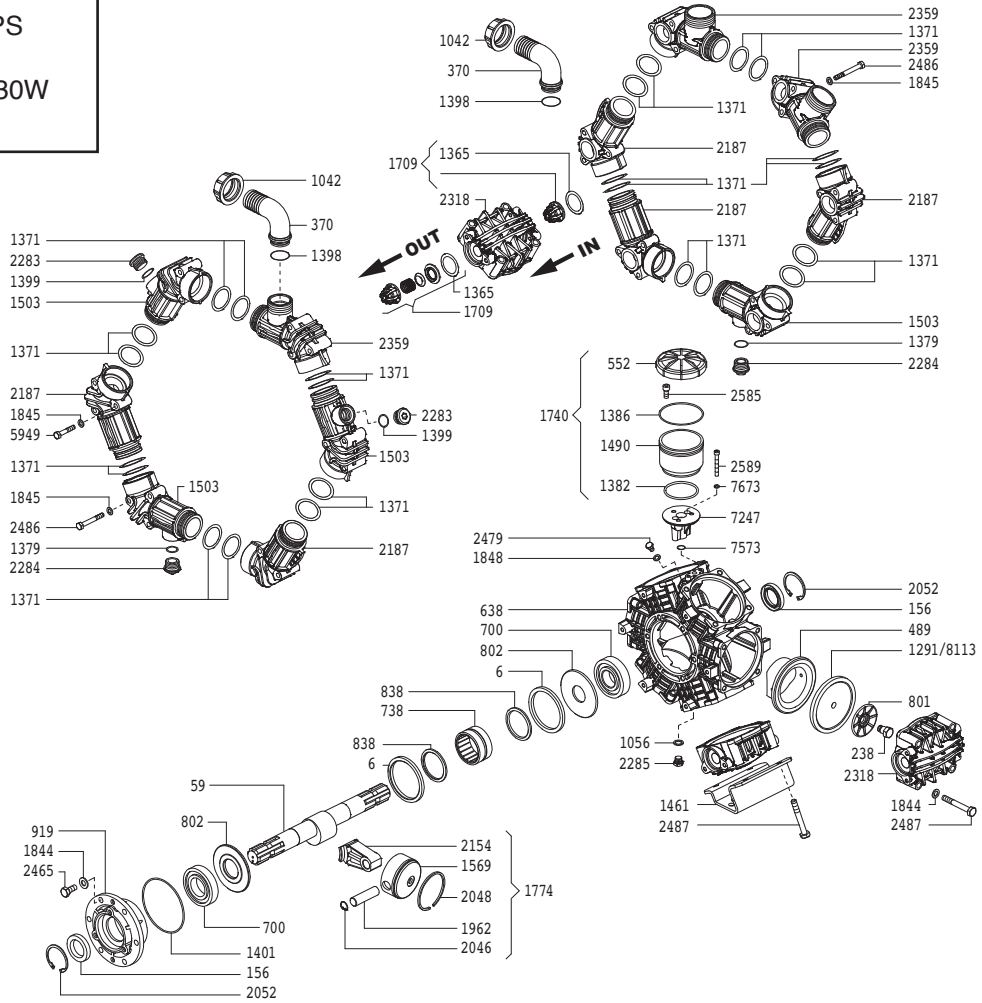
NOTE - Protect pumps from freezing. If freezing conditions exist, flush pump and system with a 50/50 mixture of anti-freeze and water.

UDOR U.S.A., INC.

500 Apollo Drive
Lino Lakes, MN 55014
TEL. (651) 785-0666
FAX (800) 732-2670
www.udorusa.com

ZETA-260/CC - Exploded View Diagram & Parts List

ZETA-260/CC PUMPS
Require 90oz.
UDOR LUBE, or SAE 30W
Non-detergent Oil



*Optional
Thru-Shaft
Protector

*Optional PTO
Safety Shield

REF#	PART#	DESCRIPTION	QTY	REF#	PART#	DESCRIPTION	QTY
6	0001.08	Retainer Ring	2	1774	6015.59	Piston & Rod Assembly	6
59	0002.29	Crankshaft	1	1843	1403.07	Washer	2
156	0007.02	Seal	2	1844	1403.09	Washer	30
238	0102.03	Diaphragm Bolt	6	1845	1403.10	Washer	36
370	0202.78	1-1/2" Hose Barb Elbow	3	1848	1403.12	Washer	1
489	0206.14	Piston Sleeve	6	1962	1502.02	Connecting Rod Pin	6
552	0208.22	Oil Reservoir Cap	1	2046	1506.02	Snap Ring	12
638	0209.B5	Pump Body	1	2048	1509.05	Piston Ring	4
700	0214.04	Ball Bearing	2	2052	1506.16	Snap Ring	2
738	0216.07	Bearing	1	2154	1519.33	Connecting Rod	6
801	0301.07	Retainer Washer	6	2187	1601.34	Manifold Tube	5
802	0301.28	Crankshaft Washer	2	2283	1603.87	Plug	2
838	0302.59	Rod Spacer	2	2284	1603.36	Plug	2
919	0501.67	Bearing Flange	1	2285	1603.67	Plug	1
1042	0604.50	Barb Nut	3	2318	1604.E3	Head	6
1056	0605.49	Gasket	1	2359	1605.37	Discharge / Inlet Tube	3
1083	0605.49	Gasket	1	2465	1804.03	Bolt	6
1291	0903.02	Piston Diaphragm, BUNA-N Optional	6	*2466	1804.06	Bolt	3
**1365	1101.01	O-Ring	12	2479	1804.77	Bolt	1
1371	1101.G5	O-Ring	24	2486	1804.79	Bolt	36
1379	1101.04	O-Ring	2	2487	1804.25	Bolt	24
1382	1101.68	O-Ring	1	*2582	1805.04	Bolt	2
1386	1101.32	O-Ring	1	2585	1805.06	Bolt	3
1398	1101.42	O-Ring	3	2589	1805.71	Bolt	2
1399	1101.51	O-Ring	2	5949	1804.72	Bolt	12
1401	1101.58	O-Ring	1	7247	0501.H9	Oil Reservoir Adapter	1
1461	1202.98	Mounting Rail	2	7573	1101.56	O-Ring	1
1490	1203.30	Oil Sight Glass	1	*7600	1403.36	Washer	3
1503	1605.38	Discharge / Inlet Manifold	4	*7650	1219.02	PTO Safety Shield Optional	1
1569	1205.08	Piston	6	*7653	1219.15	Shaft Protector Thru Shaft Optional	1
1709	6006.08	Valve Assembly	12	7673	1412.03	Washer	2
1740	6033.02	Oil Reservoir Assembly	1	**8113	0903.34	Piston Diaphragm, DESMOPAN Standard	6

** Parts Included in Diaphragm Repair Kit - #8700.44 (Also available in BUNA-N - #8700.29)