



RO-210/CC

Exploded View Diagram and Parts List

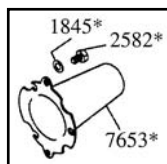
RO-210/CC PUMP

Requires **90 oz.**

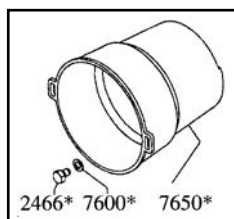
UDOR LUBE,

or **SAE 30W**

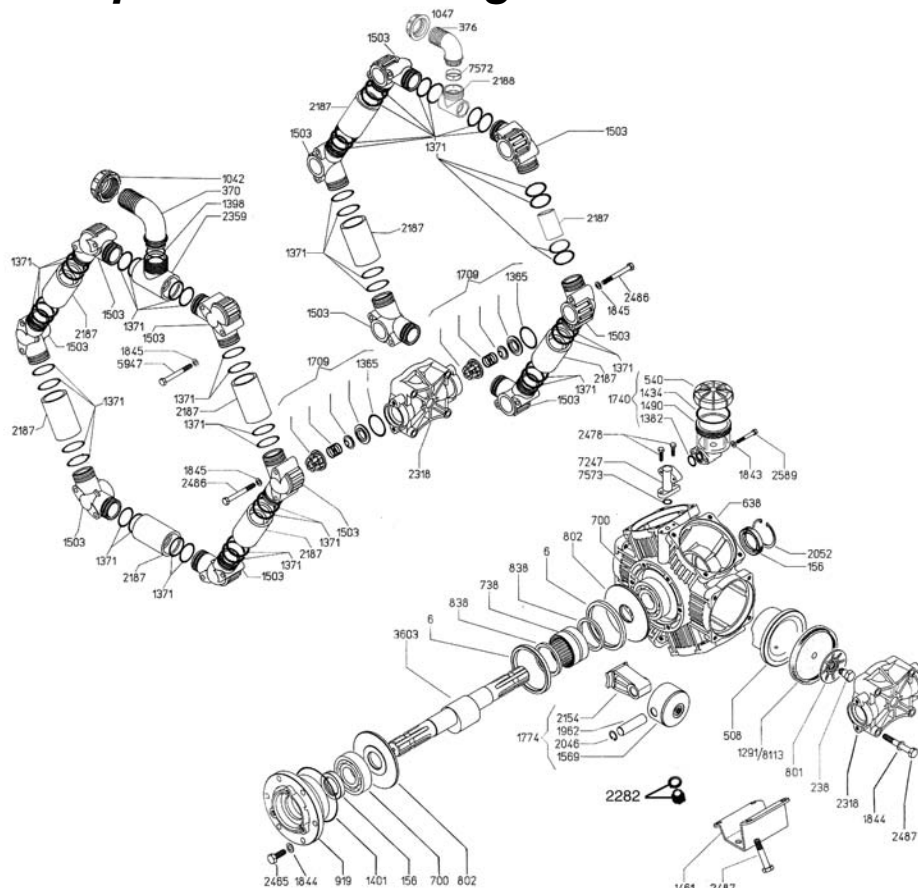
Non-detergent Oil



*Optional
Thru-Shaft
Protector



*Optional PTO
Safety Shield



REF#	PART#	DESCRIPTION	QTY	REF#	PART#	DESCRIPTION	QTY
6	0001.08	Retainer Ring	2	1774	6015.32	Piston & Rod Assembly	6
156	0007.02	Seal	2	1843	1403.07	Washer	2
238	0102.03	Diaphragm Bolt	6	1844	1403.09	Washer	30
370	0202.78	1-1/2" Hose Barb Elbow	1	1845	1403.10	Washer	36
376	0202.79	Suction Elbow 2"	1	1962	1502.02	Connecting Rod Pin	6
508	0206.36	Piston Sleeve	6	2046	1506.02	Snap Ring	12
540	0208.98	Oil Reservoir Cap	1	2052	1506.16	Snap Ring	1
638	0209.49	Pump Body	1	2154	1519.21	Connecting Rod	6
700	0214.04	Ball Bearing	2	2187	1601.16	Manifold Tube	10
738	0216.07	Bearing	1	2188	1601.17	Inlet Adapter	1
801	0301.07	Retainer Washer	6	2282	1603.50	Drain Plug	1
802	0301.28	Crankshaft Washer	2	2318	1604.36	Head	6
838	0302.59	Rod Spacer	2	2359	1605.20	Discharge Tube	1
919	0501.67	Bearing Flange	1	2465	1804.03	Bolt	6
1042	0604.50	Barb Nut	1	*2466	1804.06	Bolt	3
1047	0604.39	Nut	1	2478	1804.68	Bolt	2
1291	0903.02	Piston Diaphragm, BUNA-N Optional	6	2486	1804.79	Bolt	36
**1365	1101.01	O-Ring	12	2487	1804.25	Bolt	24
1371	1101.07	O-Ring	48	*2582	1805.04	Bolt	2
1382	1101.29	O-Ring	1	2589	1805.31	Bolt	2
1398	1101.42	O-Ring	1	3603	0002.87	Crankshaft	1
1401	1101.58	O-Ring	1	5947	1804.62	Bolt	12
1434	1101.01	O-Ring	1	7247	0501.91	Oil Reservoir Adapter	1
1461	1202.38	Mounting Rail	2	7572	1101.93	O-Ring	2
1490	1203.27	Oil Sight Glass	1	7573	1101.56	O-Ring	1
1503	1203.42	Discharge / Inlet Manifold	12	*7600	1403.36	Washer	3
1569	1205.06	Piston	6	*7650	1219.02	PTO Safety Shield Optional	1
1709	6006.08	Valve Assembly	12	*7653	1219.15	Shaft Protector Thru Shaft Optional	1
1740	6033.01	Oil Reservoir Assembly	1	**8113	0903.34	Piston Diaphragm, DESMOPAN Standard	6

* Parts Included in Diaphragm Repair Kit - #8700.44. (Also available in BUNA-N - #8700.29.)

RO-210/CC



RO-210/CC

Six Diaphragm, Low Pressure Pump

The RO-210/CC is a six-diaphragm low pressure pump with plasticized aluminum heads and glass-filled nylon manifolds. These pumps work well for various horticultural and agricultural spraying applications. Simplicity of design and common parts allow easy and affordable maintenance. Liquid handling parts are plasticized aluminum, glass-filled nylon, and stainless steel.

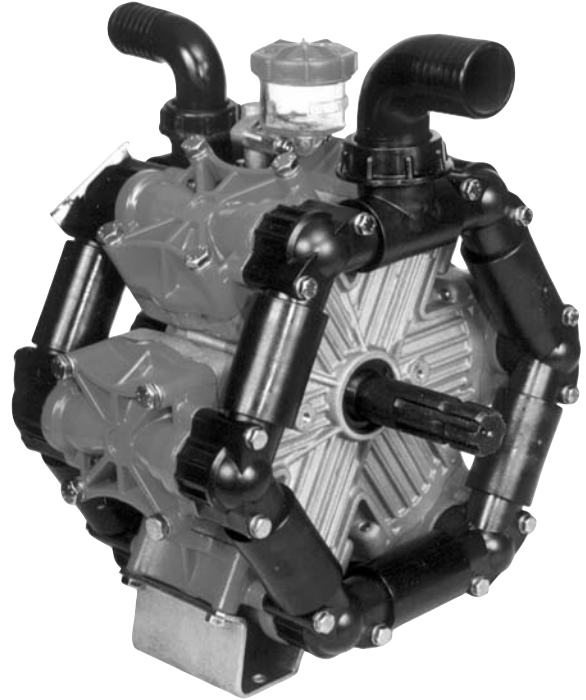
The RO-210/CC is driven by a 1-3/8", six-spline, male PTO thru shaft, and has two optional PTO safety shields.

A control unit is not included with the RO-210/CC. Please consult UDOR U.S.A. Diaphragm Pump Catalog for an appropriate unit.

For industrial uses and spraying applications not listed please contact UDOR U.S.A.

For all PTO drive applications, safety shield part #1219.02 is recommended.

For Thrushaft protection, order part #1219.15.



SPECIFICATIONS

Maximum Flow	56 GPM
Maximum Pressure.....	300 PSI
Maximum Pump Speed	540 RPM
Maximum Temperature	140° F
Ports	
Inlet.....	2" Hose Barb
Discharge.....	1-1/2" Hose Barb
Dimensions	L-11" x W-15.5" x H-18"
Weight	75 lbs.
Diaphragm Material	
Standard.....	DESMOPAN
Optional	BUNA-N

NOTE - Protect pumps from freezing. If freezing conditions exist, flush pump and system with a 50/50 mixture of antifreeze and water.

RO-210/CC