



ZETA-170/C & ZETA-170/CC

Low Pressure Diaphragm Pump

ZETA-170 low pressure diaphragm pumps are excellent for various horticultural and agricultural spraying applications. Simplicity of design and common parts allow easy and affordable maintenance.

Liquid handling parts are plasticized aluminum, glass-filled nylon and stainless steel. Built-in pulsation dampener is standard on all models.

The ZETA-170/C comes with a 1-3/8" six-splined male PTO shaft. ZETA-170/CC comes with a dual 1-3/8" six-splined male PTO thru-shaft.

For industrial uses and spraying applications not listed, please consult UDOR U.S.A. For all PTO drive app. safety shield part # 1219.02 is recommended. 1219.15 shield for thru shaft protection.



A control unit is not included with the ZETA-170/C & ZETA-170/CC. Please consult UDOR U.S.A. Diaphragm Pump catalog or website for an appropriate unit.

SPECIFICATIONS

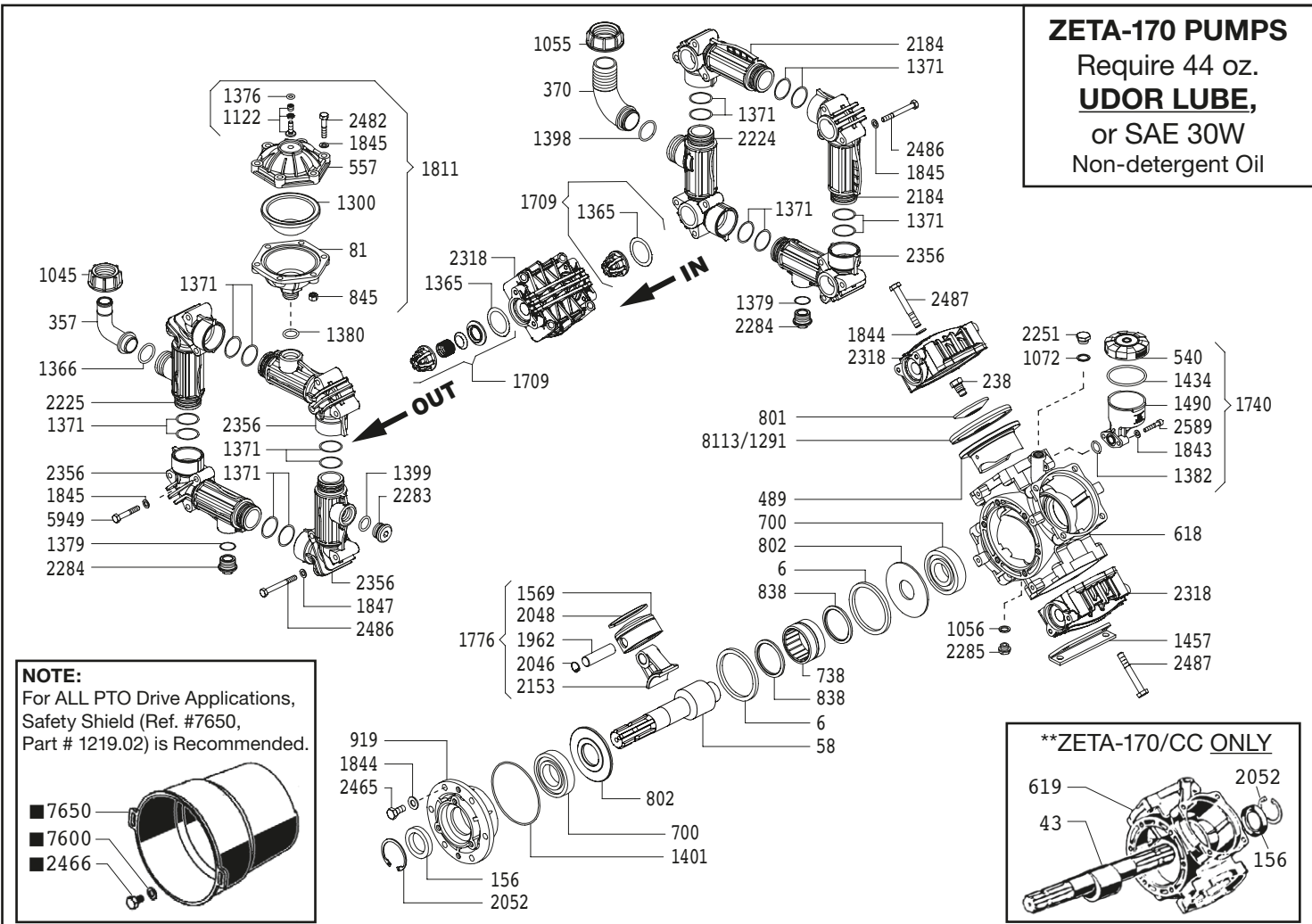
Maximum Flow	45 GPM
Maximum Pressure.....	300 PSI
Maximum Pump Speed.....	540 RPM
Maximum Temperature.....	140°F
Ports	
Inlet.....	1-1/2" Hose Barb
Discharge	1" Hose Barb
Dimensions.....	L-12" x W-15.5" x H-17"
Weight	56 lbs.
Diaphragm Material	
Standard.....	DESMOPAN
Optional.....	BUNA-N

NOTE - Protect pumps from freezing. If freezing conditions exist, flush pump and system with a 50/50 mixture of anti-freeze and water.

UDOR U.S.A., INC.
500 Apollo Drive
Lino Lakes, MN 55014
TEL. (651) 785-0666
FAX. (800) 732-2670
www.udorusa.com

ZETA-170/C & ZETA-170/CC - Exploded View Diagram and Parts List

ZETA-170 PUMPS
 Require 44 oz.
UDOR LUBE,
 or SAE 30W
 Non-detergent Oil



NOTE:
 For ALL PTO Drive Applications,
 Safety Shield (Ref. #7650,
 Part # 1219.02) is Recommended.

7650
 7600
 2466

****ZETA-170/CC ONLY**

REF#	PART#	DESCRIPTION	QTY	REF#	PART#	DESCRIPTION	QTY
6	0001.08	Retainer Ring	2	1434	1101.D1	O-Ring	1
**43	0002.29	Crankshaft (ZETA-170/CC)	1	1457	1202.97	Mounting Rail	2
58	0002.46	Crankshaft (ZETA-170/C)	1	1490	1203.27	Oil Reservoir	1
81	0003.15	Pressure Accumulator	1	1569	1205.08	Aluminum Piston	4
156	0007.02	Seal (Qty. 2 for ZETA-170/CC)	1	1709	6006.08	Valve Assembly	8
238	0102.03	Diaphragm Bolt	4	1740	6033.01	Oil Reservoir Assembly	1
357	0202.18	Discharge Elbow	1	1776	6015.61	Piston & Rod Assembly	4
370	0202.78	Suction Elbow	1	1811	6031.09	Accumulator Assembly	1
489	0206.14	Piston Sleeve	4	1843	1403.07	Washer	2
540	0208.98	Oil Reservoir Cap	1	1844	1403.09	Washer	18
557	0208.20	Accumulator Head	1	1845	1403.10	Washer	30
618	0209.A8	Pump Body (ZETA-170/C)	1	1962	1502.01	Connecting Rod Pin	4
**619	0209.A9	Pump Body, T.S. (ZETA-170/CC)	1	2046	1506.02	Snap Ring	8
700	0214.04	Ball Bearing	2	2048	1509.05	Piston Ring	4
738	0216.07	Roller Bearing	1	**2052	1506.16	Snap Ring	2
801	0301.07	Retainer Washer	4	2153	1519.35	Connecting Rod	4
802	0301.28	Washer	2	2184	1601.38	Manifold	2
838	0302.59	Spacer Ring	2	2224	1601.37	Suction Manifold	1
845	0303.01	Hex Nut	6	2225	1605.41	Discharge Manifold	1
919	0501.L3	Bearing Flange	1	2251	1603.02	Oil Plug	1
1045	0604.32	Barb Nut	1	2282	1603.50	Drain Plug	1
1055	0604.50	Barb Nut	1	2283	1603.87	Plug	1
1056	0605.49	Gasket	1	2284	1603.36	Plug	2
1072	0605.09	Aluminum Gasket	1	2285	1603.67	Plug	1
1122	0608.16	Air valve Assembly	1	2318	1604.E3	Head	4
1291	0903.02	Piston Diaphragm, BUNA-N Optional	4	2356	1605.42	Manifold with 3/4" FNPT Port	4
*1300	0903.14	Accumulator Diaphragm	1	2465	1804.03	Bolt	6
*1365	1101.01	O-Ring	8	■ 2466	1804.06	Bolt	3
1366	1101.02	O-Ring	1	2482	1804.09	Bolt	6
1371	1101.L6	O-Ring	16	2486	1804.79	Bolt	16
1376	1101.16	O-Ring	1	2487	1804.25	Bolt	16
1379	1101.04	O-Ring	2	2589	1805.31	Bolt	2
1380	1101.25	O-Ring	1	■ 7600	1403.36	Washer	3
1382	1101.29	O-Ring	1	■ 7650	1219.02	PTO Safety Shield optional	1
1398	1101.42	O-Ring	1	*8113	0903.34	Piston Diaphragm, DESMOPAN Standard	4
1399	1101.51	O-Ring	1	5949	1804.72	Bolt	8
1401	1101.58	O-Ring	1				

* Parts Included in Diaphragm Repair Kit - #8700.09. (Also available in BUNA-N - #8700.16.)